

**Evans
Elder
Brown &
Seubert**

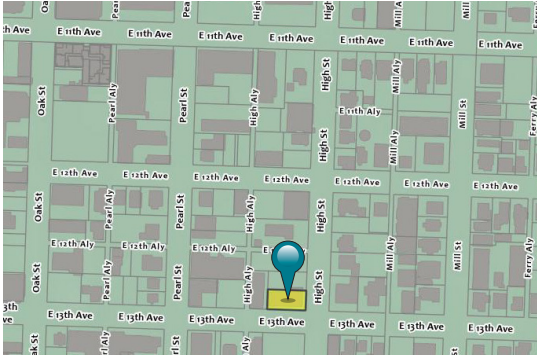
COMMERCIAL REAL ESTATE

101 E. Broadway
Suite 101
Eugene, OR 97401
(541) 345-4860

eebcre.com

FOR LEASE

265 East 13th Avenue
Eugene, Oregon 97401



CONTACT

Jeff Elder

jeff@eebcre.com

Ashley Hope Elder

ashley@eebcre.com

(541) 345-4860

Licensed in the State of Oregon



13th Avenue Retail Space at High Street

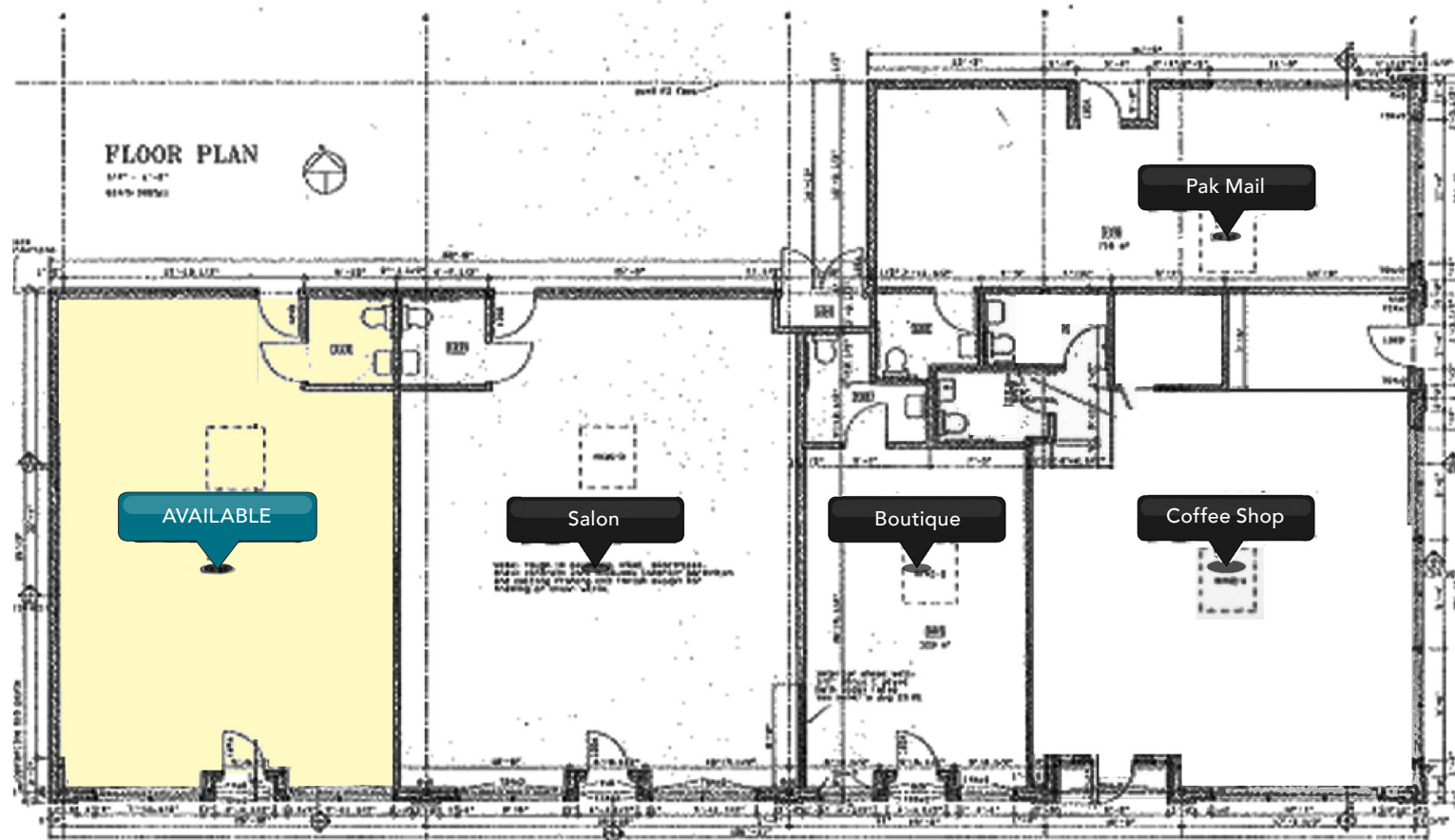
265 East 13th Avenue

- 1,009 square feet
- On-site parking
- Restroom
- \$1,650.00 per month + \$745.00 per month triple nets

Floor Plan

Triple Nets

- Building insurance
- Grounds and parking maintenance
- HVAC maintenance
- Garbage
- Management
- Common water and electric
- Property taxes



13th Ave. Retail Space for Lease

265 East 13th Avenue
Eugene OR 97401

For more property and leasing
information, please contact:

Jeff Elder
jeff@eebcre.com

Ashley Hope Elder
ashley@eebcre.com

(541) 345-4860

Evans
Elder
Brown &
Seubert

COMMERCIAL REAL ESTATE

