



FOR LEASE

Class A Office Space

920 Country Club Rd.
Eugene, OR 97401

AVAILABLE SPACES INCLUDE:

- Suite 100A: Approximately 10,756 RSF on the 1st Floor (Previous Medical Space)
- Suite 100B: Approximately 12,882 RSF on the 1st Floor
- Suite 200B: Approximately 3,280 RSF on the 2nd Floor
- Suite 240A: Approximately 4,163 RSF on the 2nd Floor
- Excellent location on Country Club Road with monument signage
- \$2.00 per square foot per month, fully serviced

**Evans
Elder
Brown &
Seubert**

COMMERCIAL REAL ESTATE

CONTACT

Stephanie Seubert

stephanie@eebcre.com

Alan Evans

alan@eebcre.com

(541) 345-4860

Licensed in the State of Oregon.

Exterior & Lobby

920 Country Club Road
Eugene, Oregon 97401

Evans
Elder
Brown &
Seubert

COMMERCIAL REAL ESTATE

CONTACT

**Stephanie
Seubert**

stephanie@eebcre.com

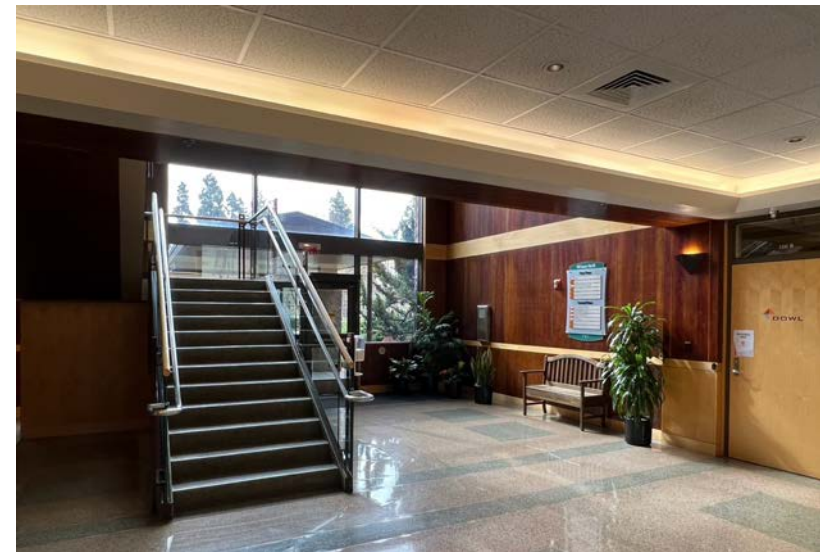
**Alan
Evans**

alan@eebcre.com

(541) 345-4860

101 East Broadway
Suite #101
Eugene, OR 97401

Licensed in the
State of Oregon.



1st Floor Plan | Suite 100A

920 Country Club Road
Eugene, Oregon 97401

Evans
Elder
Brown &
Seubert

COMMERCIAL REAL ESTATE

CONTACT

**Stephanie
Seubert**

stephanie@eebcre.com

**Alan
Evans**

alan@eebcre.com

(541) 345-4860

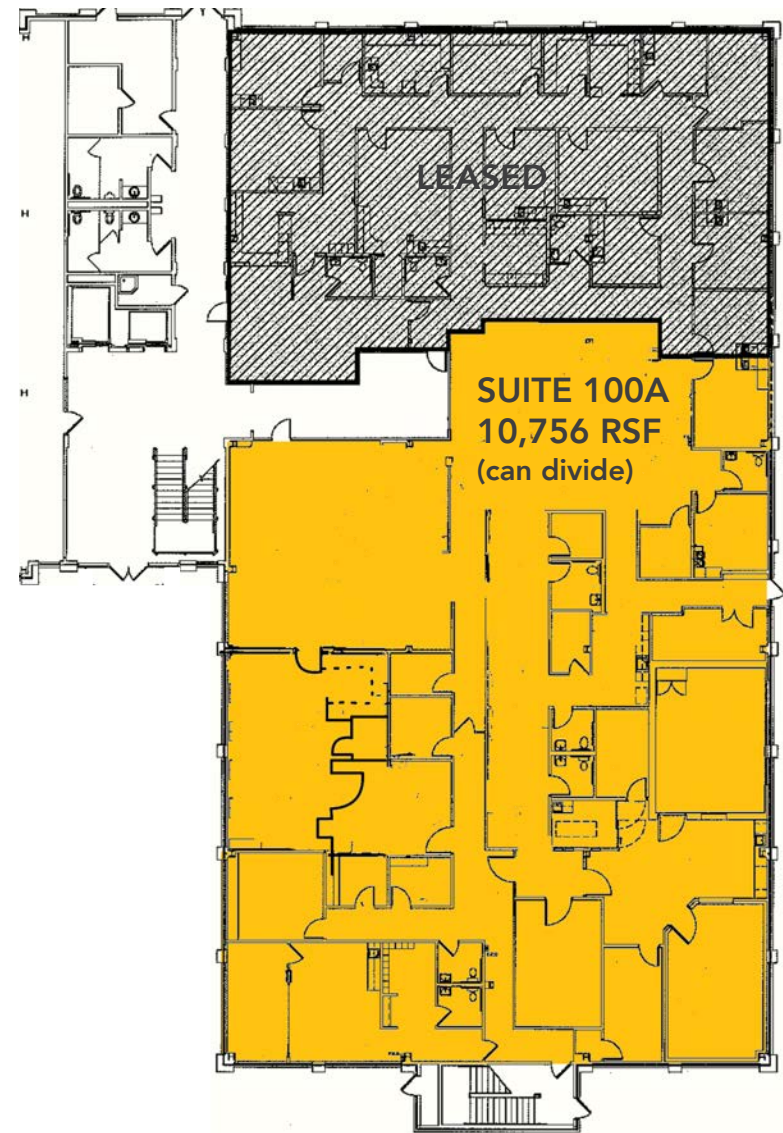
101 East Broadway
Suite #101
Eugene, OR 97401

Licensed in the
State of Oregon.

Suite 100A

APPROX. 10,786 RSF

- Space previously configured for medical use as a clinic and imaging center and still has abundant plumbing in place



1st Floor Plan | Suite 100B

920 Country Club Road
Eugene, Oregon 97401

Evans
Elder
Brown &
Seubert

COMMERCIAL REAL ESTATE

CONTACT

**Stephanie
Seubert**

stephanie@eebcre.com

**Alan
Evans**

alan@eebcre.com

(541) 345-4860

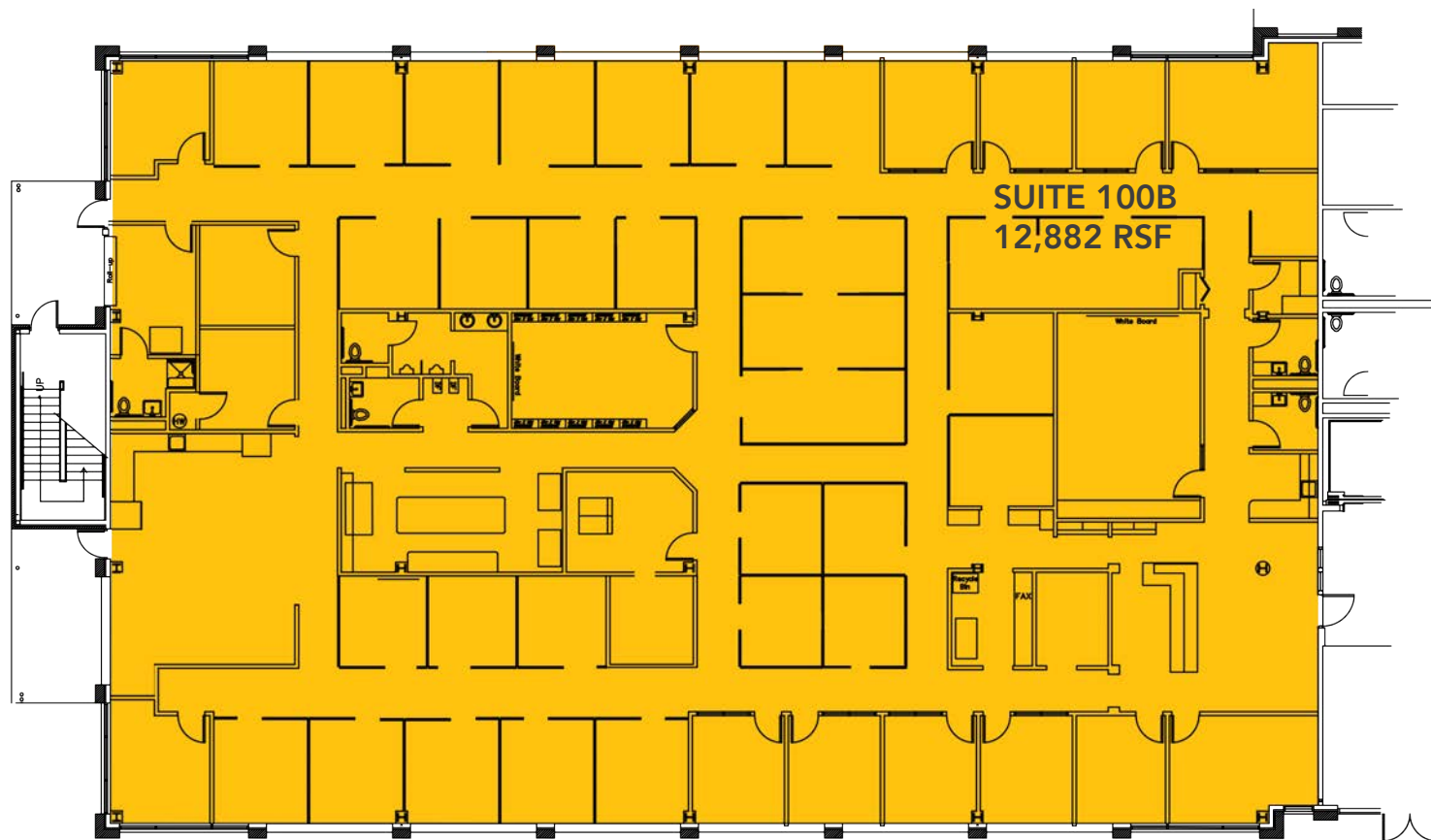
101 East Broadway
Suite #101
Eugene, OR 97401

Licensed in the
State of Oregon.

Suite 100B

APPROX. 12,882 RSF

- A combination of private offices, open cubicle areas & various conference spaces
- A nice entry reception area
- Multiple private restrooms and one shower
- Includes large lunch/break room
- Roll-up door



2nd Floor Plan | Suite 200B

920 Country Club Road
Eugene, Oregon 97401

Evans
Elder
Brown &
Seubert

COMMERCIAL REAL ESTATE

CONTACT

**Stephanie
Seubert**

stephanie@eebcre.com

**Alan
Evans**

alan@eebcre.com

(541) 345-4860

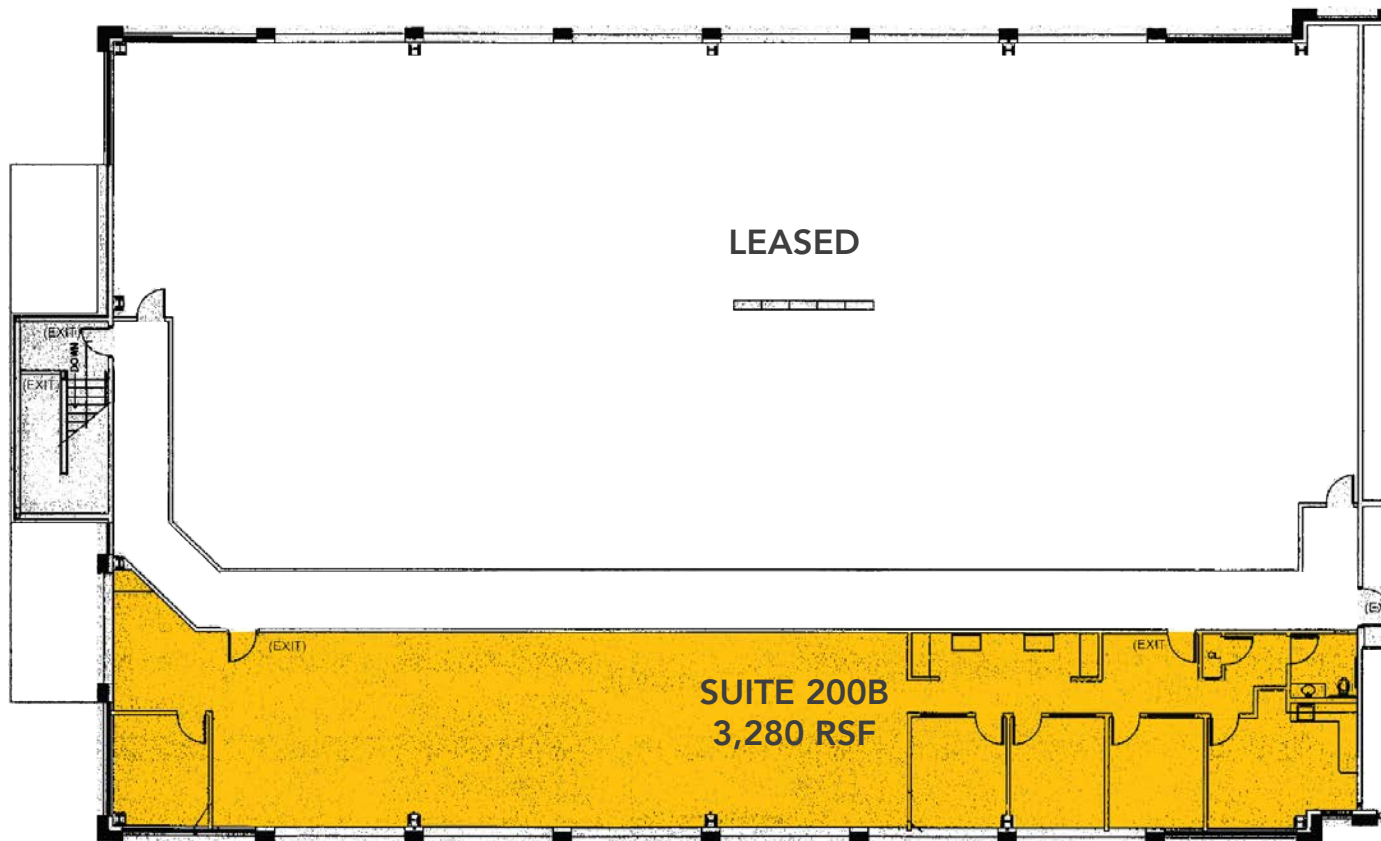
101 East Broadway
Suite #101
Eugene, OR 97401

Licensed in the
State of Oregon.

Suite 200B

APPROX. 3,280 RSF

- Four (4) Private Offices
- Private Restroom
- Large Open Cubicle Area
- Break Room
- Work Area



Location

920 Country Club Road
Eugene, Oregon 97401

Evans
Elder
Brown &
Seubert

COMMERCIAL REAL ESTATE

CONTACT

**Stephanie
Seubert**

stephanie@eebcre.com

**Alan
Evans**

alan@eebcre.com

(541) 345-4860

101 East Broadway
Suite #101
Eugene, OR 97401

Licensed in the
State of Oregon.

