

**Evans
Elder
Brown &
Seubert**

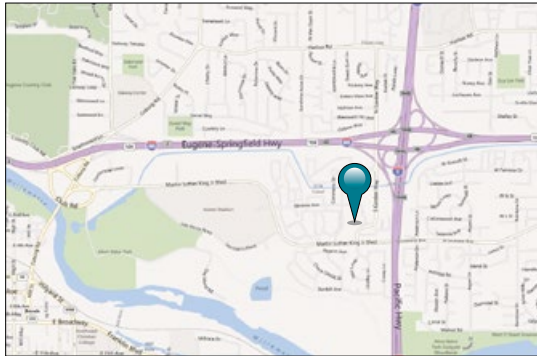
COMMERCIAL REAL ESTATE

101 E. Broadway
Suite 101
Eugene, OR 97401
(541) 345-4860

eebcre.com

FOR LEASE

330 South Garden Way
Eugene, Oregon



CONTACT

Jeff Elder
jeff@eebcre.com

Ashley Hope Elder
ashley@eebcre.com

(541) 345-4860

Licensed in the State of Oregon



New Office Suites

Chase Gardens / MLK Location

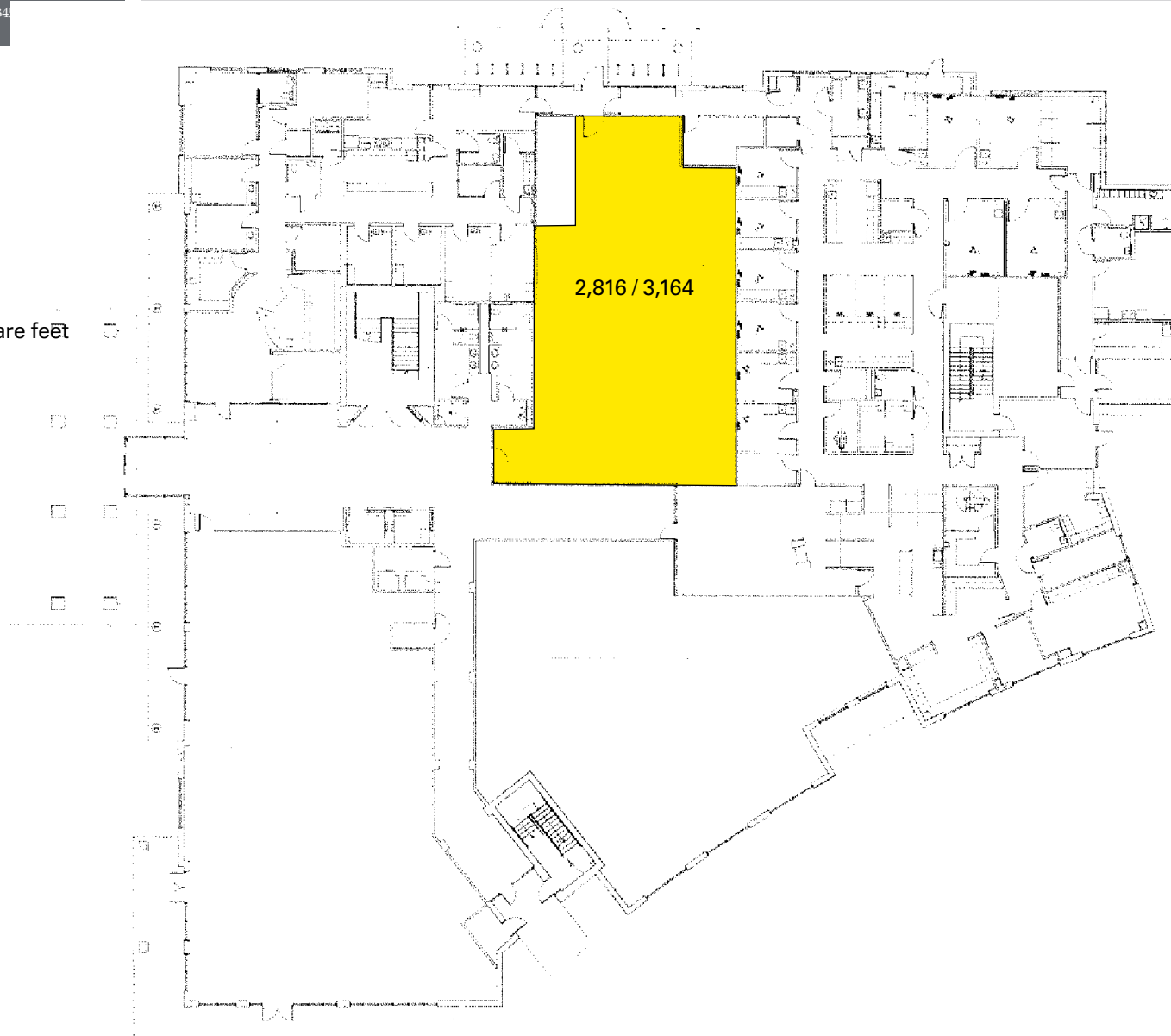
- 3,164 square feet on the ground floor
- 3,061 square feet on the second floor
- \$20.00 improvement allowance
- \$1.95 per rentable square feet full service except janitorial

The information in this package was gathered from sources deemed reliable, however Evans Elder Brown & Seubert makes no representation or warranty of the accuracy of the information. Any buyer or tenant considering a purchase or lease of this property should confirm any and all information relied upon in making the decision to purchase or lease prior to finalizing the transaction and bears the risk of all inaccuracies.

Floor Plan

First Floor

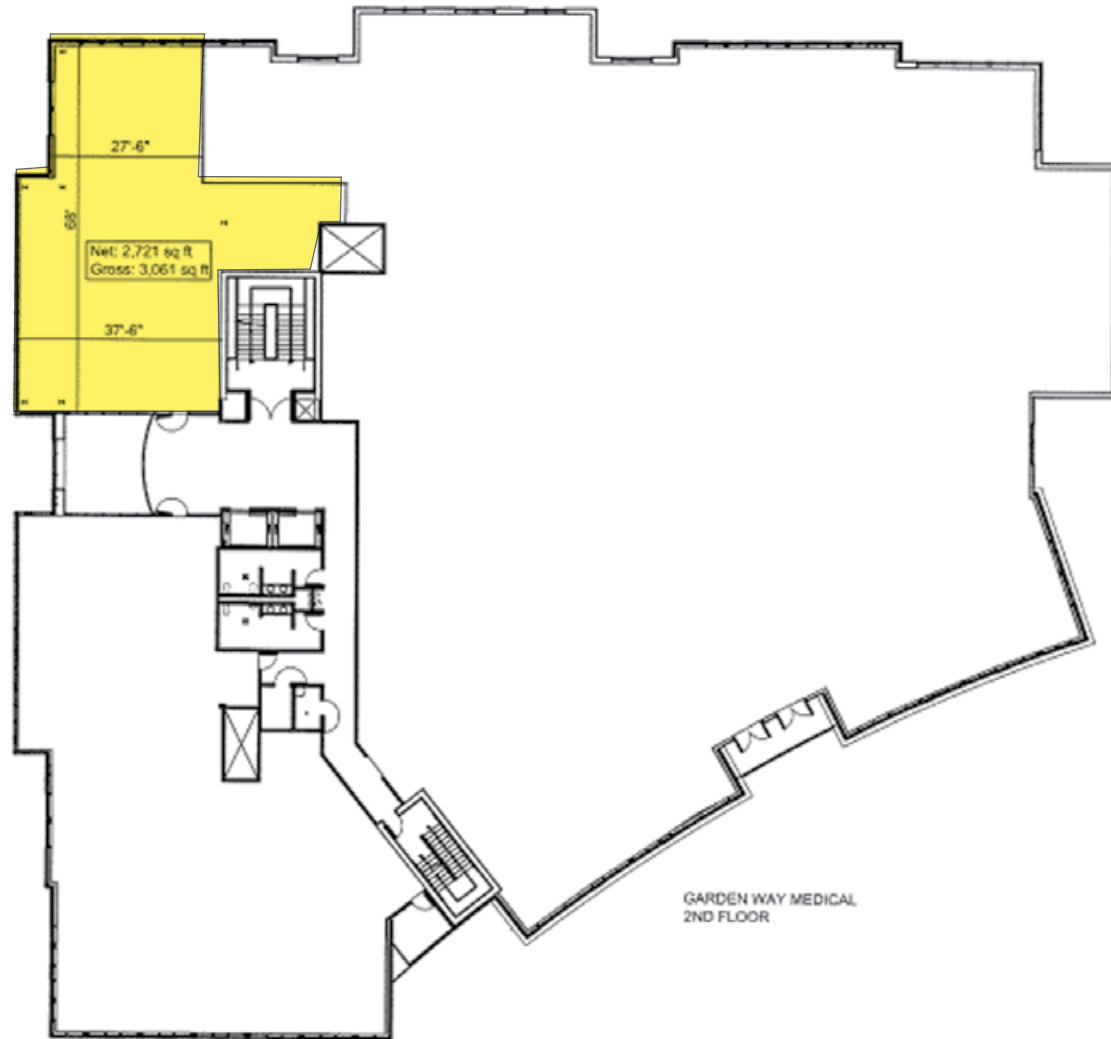
- 3,164 rentable square feet



Floor Plan

Second Floor

- 3,061 rentable square feet



Location

