

**Evans  
Elder  
Brown &  
Seubert**

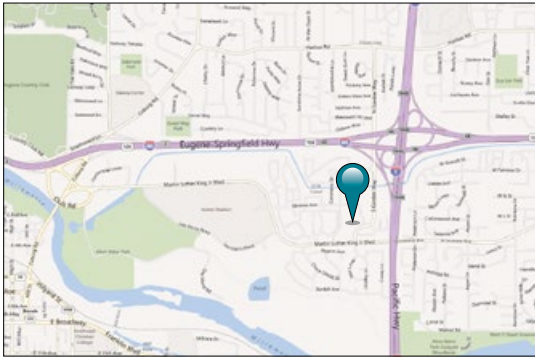
COMMERCIAL REAL ESTATE

101 E. Broadway  
Suite 101  
Eugene, OR 97401  
(541) 345-4860

*eebcre.com*

## FOR LEASE

330 South Garden Way  
Eugene, Oregon



### CONTACT

**Jeff Elder**  
jeff@eebcre.com

**Ashley Hope Elder**  
ashley@eebcre.com

(541) 345-4860

Licensed in the State of Oregon



## New Office Suites

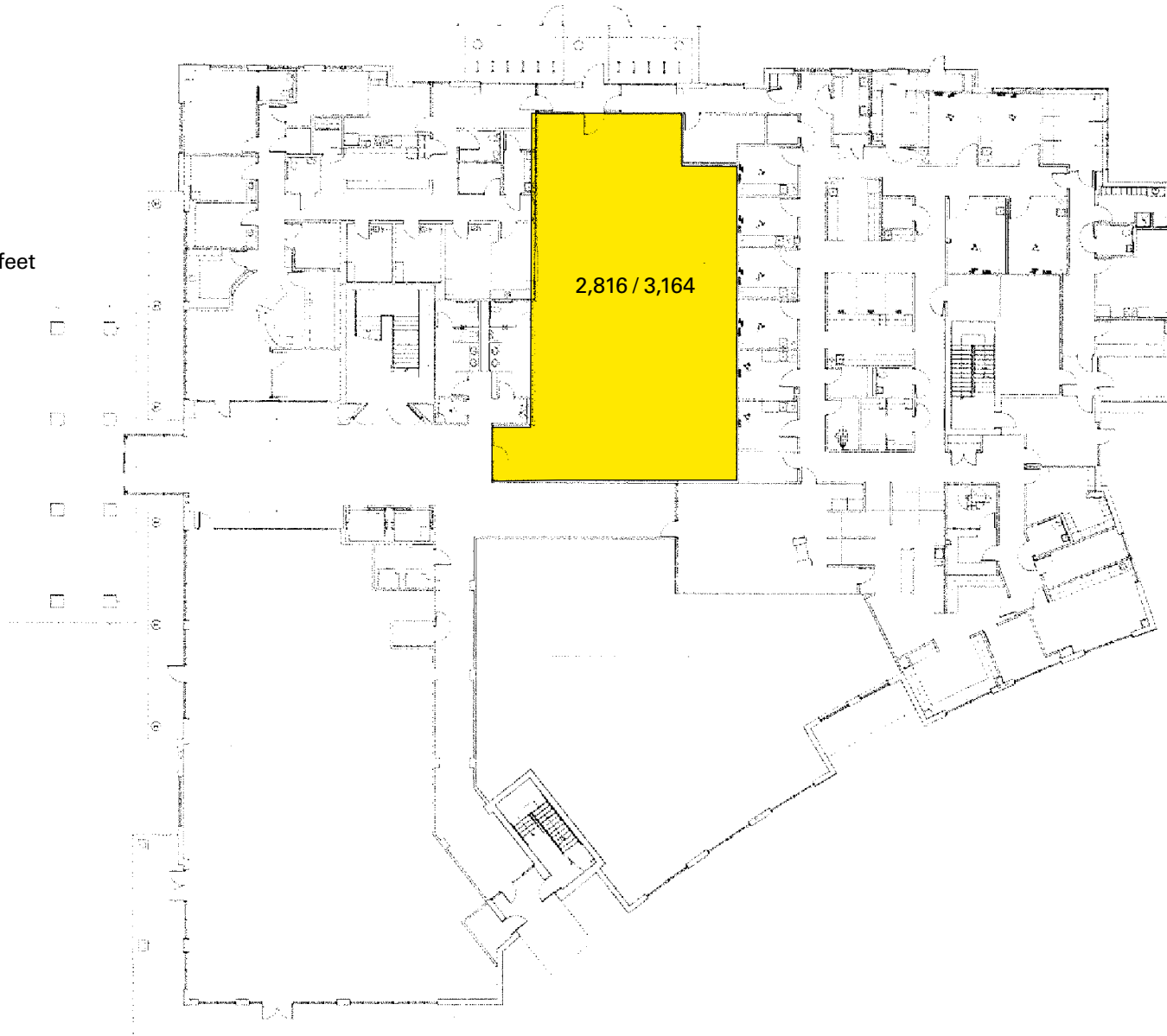
### Chase Gardens / MLK Location

- 3,164 square feet on the ground floor
- 3,061 square feet on the second floor
- \$20.00 improvement allowance
- \$1.95 per rentable square feet full service except janitorial

# Floor Plan

## First Floor

- 3,164 rentable square feet



# Floor Plan

## Second Floor

- 3,061 rentable square feet

