

**Evans
Elder
Brown &
Seubert**

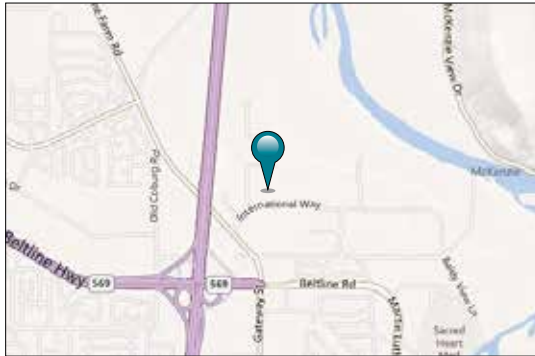
COMMERCIAL REAL ESTATE

101 E. Broadway
Suite 101
Eugene, OR 97401
(541) 345-4860

eebcre.com

FOR LEASE

3783 International Court
Springfield, Oregon



CONTACT

Stephanie Seubert
stephanie@eebcre.com

Alan Evans
alan@eebcre.com

(541) 345-4860

Licensed in the State of Oregon



Sports Way Business Park

Class A Space suitable for Office/Medical use

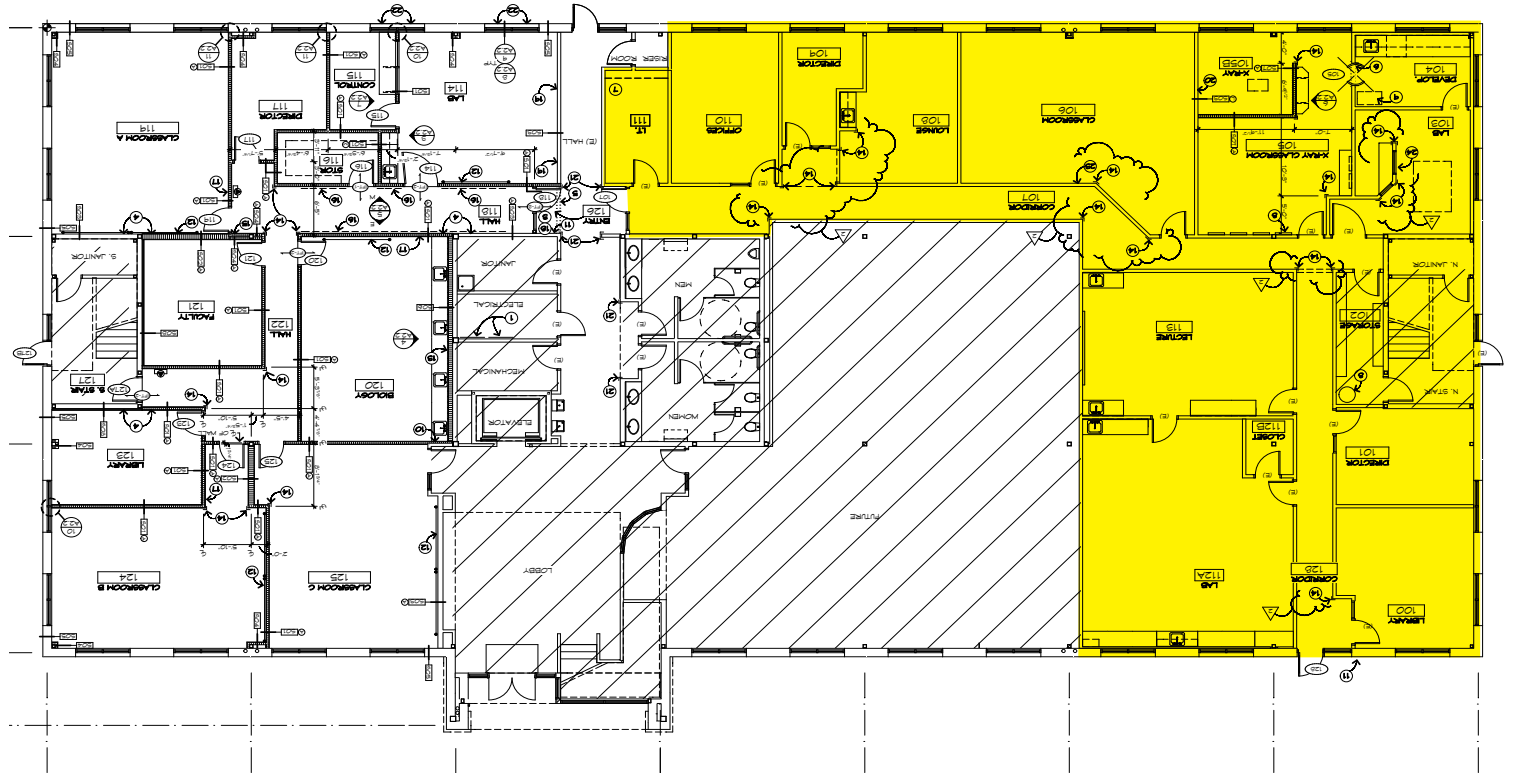
- Ground floor and 2nd floor space available
- Located in the heart of the Gateway District within one mile of the new River Bend Campus
- Easy access to I-5 and Randy Pape Beltline Highway
- Good on-site parking
- \$1.90 per square foot, fully serviced

The information in this package was gathered from sources deemed reliable, however Evans Elder, Brown & Seubert, Inc. makes no representation or warranty of the accuracy of the information. Any buyer or tenant considering a purchase or lease of this property should confirm any and all information relied upon in making the decision to purchase or lease prior to finalizing the transaction and bears the risk of all inaccuracies.

Floor Plan

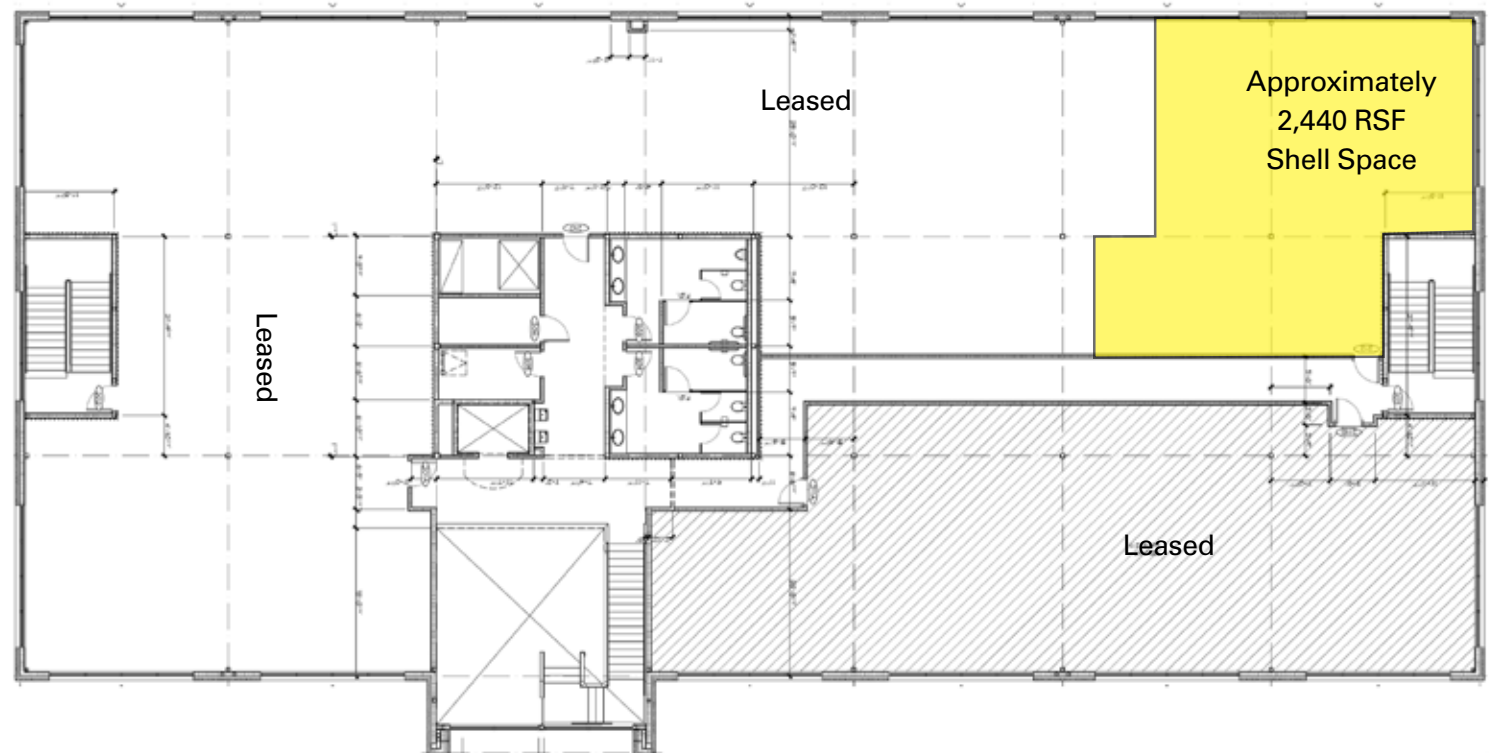
Ground Floor Space

- **Approximately 5,728 rsf**
- Located on the first floor with private entry on exterior of building as well as access from the common area corridor
- Currently set up with large medical type classroom spaces that could be converted to medical space or general office space
- Access to common area restrooms and lobby area



2nd Floor Space

- **Approximately 2,440 rsf**
- Shell space located on the 2nd floor
- Large south facing windows
- Access to common area restrooms and lobby area



Aerial



Aerial

