

**Evans  
Elder  
Brown &  
Seubert**

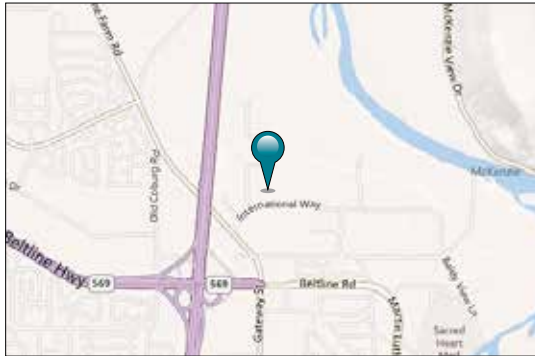
COMMERCIAL REAL ESTATE

101 E. Broadway  
Suite 101  
Eugene, OR 97401  
(541) 345-4860

*eebcre.com*

## FOR LEASE

3783 International Court  
Springfield, Oregon



### CONTACT

**Stephanie Seubert**  
stephanie@eebcre.com

**Alan Evans**  
alan@eebcre.com

(541) 345-4860

Licensed in the State of Oregon



## Sports Way Business Park

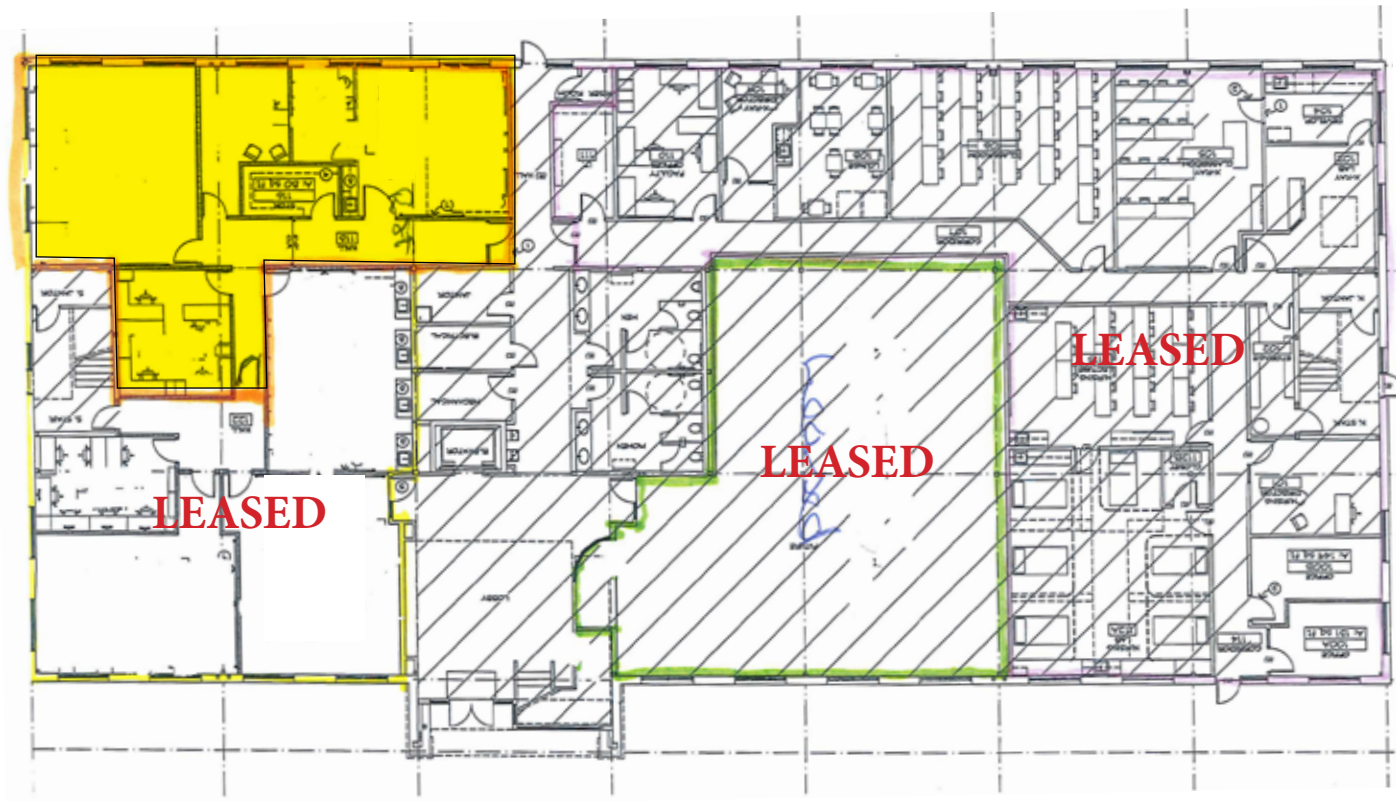
**Class A Space suitable for Office/Medical use**

- Ground floor and 2nd floor space available
- Located in the heart of the Gateway District within one mile of the new River Bend Campus
- Easy access to I-5 and Randy Pape Beltline Highway
- Good on-site parking
- \$1.90 per square foot, fully serviced

# Floor Plan

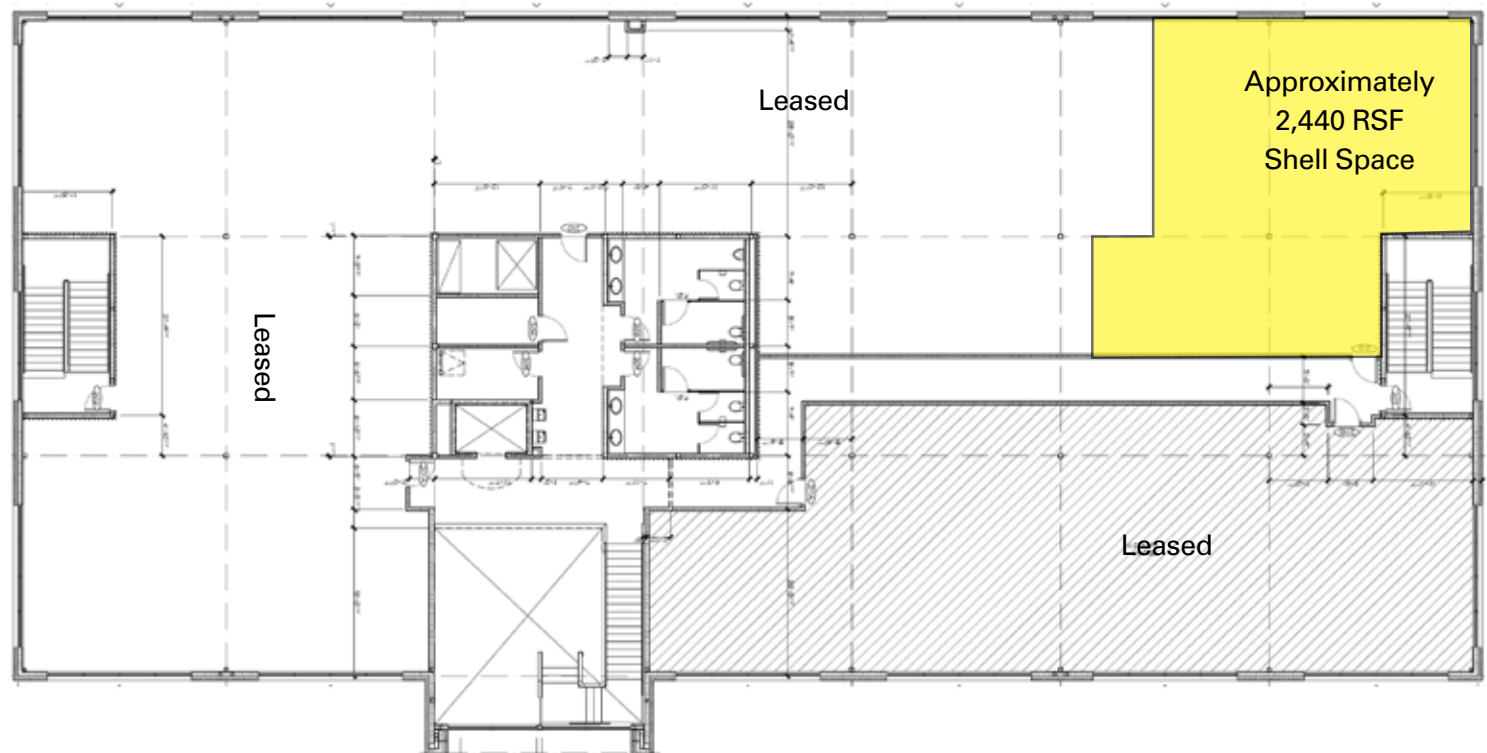
## Suite 140

- **Approximately 2,248 rsf**
- Located on the first floor
- Currently configured with 3 large rooms and one smaller office area
- Space includes some existing plumbing
- Access to common area restrooms and lobby area



## 2nd Floor Space

- **Approximately 2,440 rsf**
- Shell space located on the 2nd floor
- Large south facing windows
- Access to common area restrooms and lobby area



# Aerial



# Aerial

