

**Evans  
Elder  
Brown &  
Seubert**

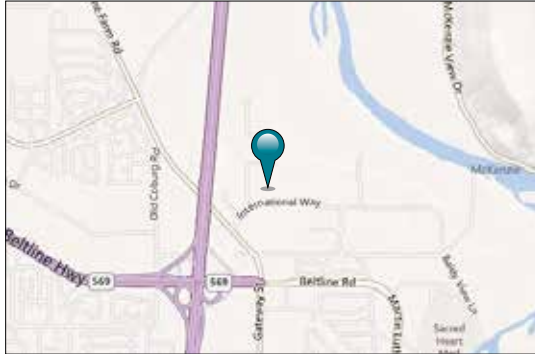
COMMERCIAL REAL ESTATE

101 E. Broadway  
Suite 101  
Eugene, OR 97401  
(541) 345-4860

*eebcre.com*

## FOR LEASE

3783 International Court  
Springfield, Oregon



### CONTACT

**Stephanie Seubert**  
stephanie@eebcre.com

**Alan Evans**  
alan@eebcre.com

(541) 345-4860

Licensed in the State of Oregon



## Sports Way Business Park

**Class A Space suitable for Office/Medical use**

- Ground floor and 2nd floor shell space available
- Located in the heart of the Gateway District within one mile of the new River Bend Campus
- Tenant improvement allowance to be negotiated
- \$1.90 per square foot, fully serviced

# Floor Plan

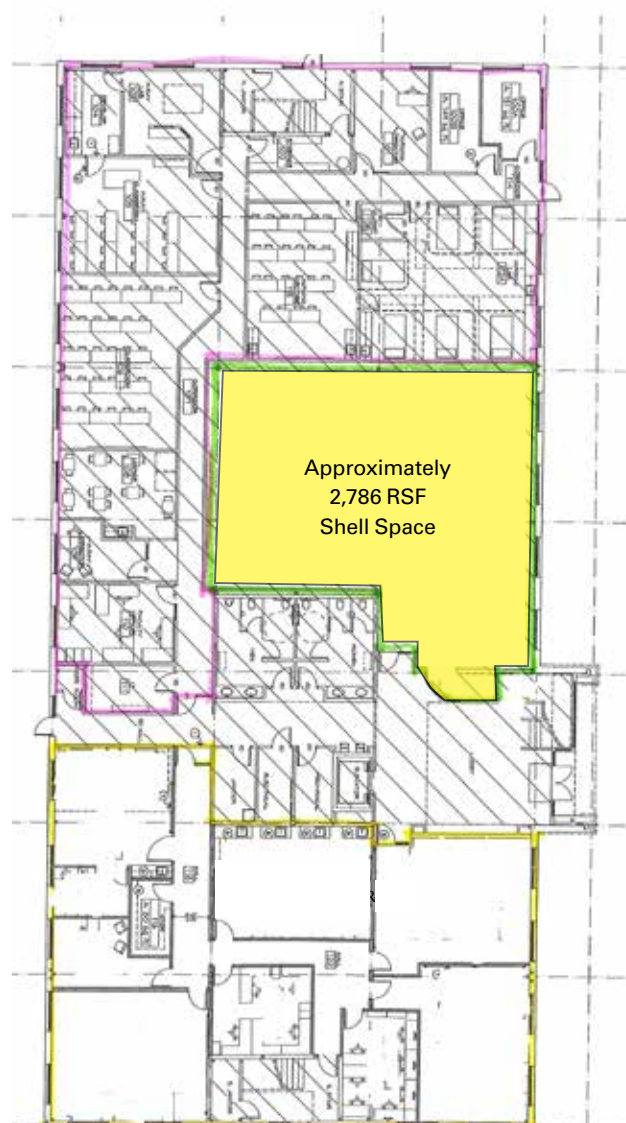
## Ground Floor Shell Space

- Approximately 2,786 rsf
- Prominent ground floor shell space off of main entry

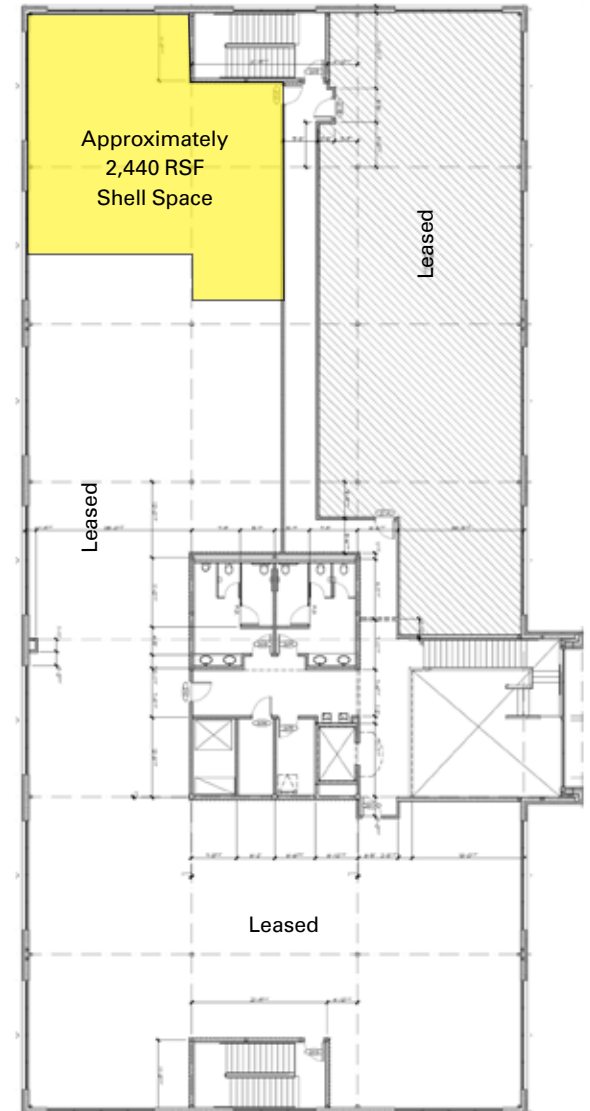
## Second Floor Shell Space

- Approximately 2,440 rsf
- Northwest corner office shell space

First Floor



Second Floor



# Aerial



# Aerial

