

**Evans
Elder
Brown &
Seubert**

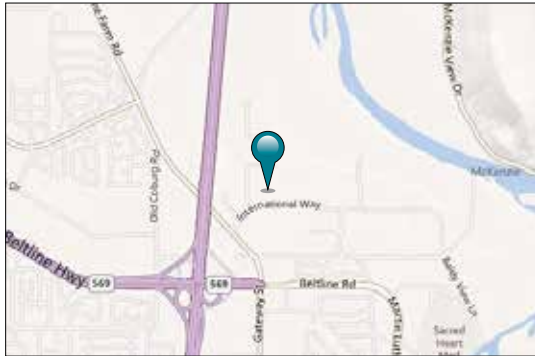
COMMERCIAL REAL ESTATE

101 E. Broadway
Suite 101
Eugene, OR 97401
(541) 345-4860

eebcre.com

FOR LEASE

3783 International Court
Springfield, Oregon



CONTACT

Stephanie Seubert
stephanie@eebcre.com

Alan Evans
alan@eebcre.com

(541) 345-4860

Licensed in the State of Oregon



Sports Way Business Park

Class A Office Space

- Ground floor and 2nd floor space available
- Second generation office space and new, class A office space in shell condition available
- Located in the heart of the Gateway District within one mile of the new River Bend Campus
- Tenant improvement allowance to be negotiated
- \$1.85 per square foot, fully serviced

The information in this package was gathered from sources deemed reliable, however Evans Elder, Brown & Seubert, Inc. makes no representation or warranty of the accuracy of the information. Any buyer or tenant considering a purchase or lease of this property should confirm any and all information relied upon in making the decision to purchase or lease prior to finalizing the transaction and bears the risk of all inaccuracies.

Floor Plan

Ground Floor Shell Space

- **Approximately 2,786 rsf**
- Prominent ground floor space off of main entry

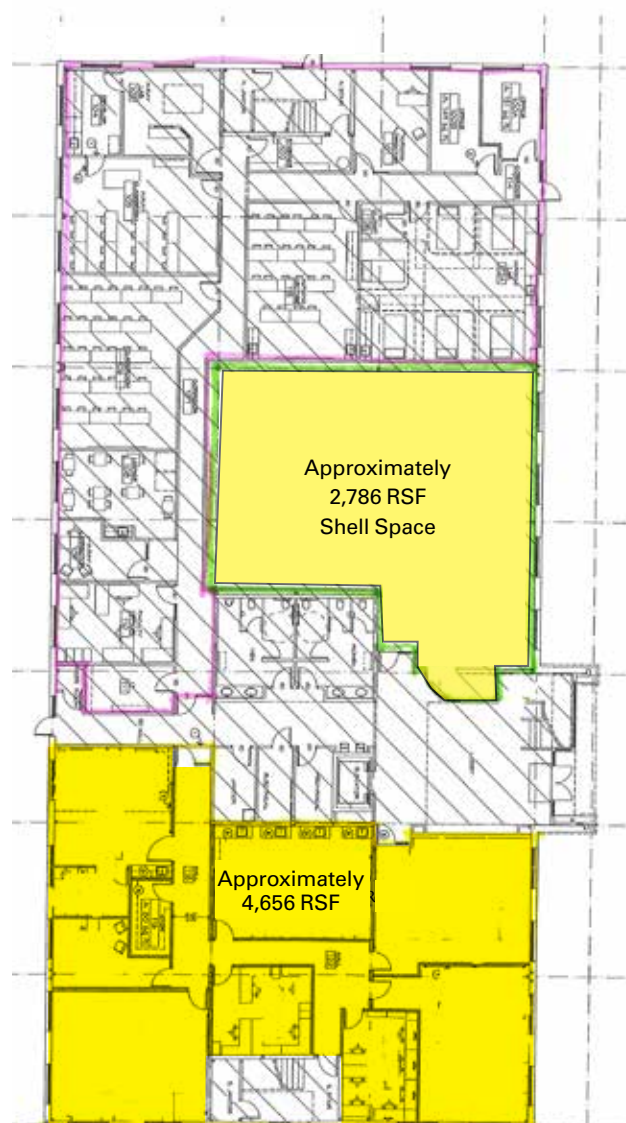
Existing Ground Floor Office

- **Approximately 4,656 rsf**
- Space includes 4 large open classrooms with 3 work areas/ offices and lab areas with plumbing
- Access to space is off of main building entry

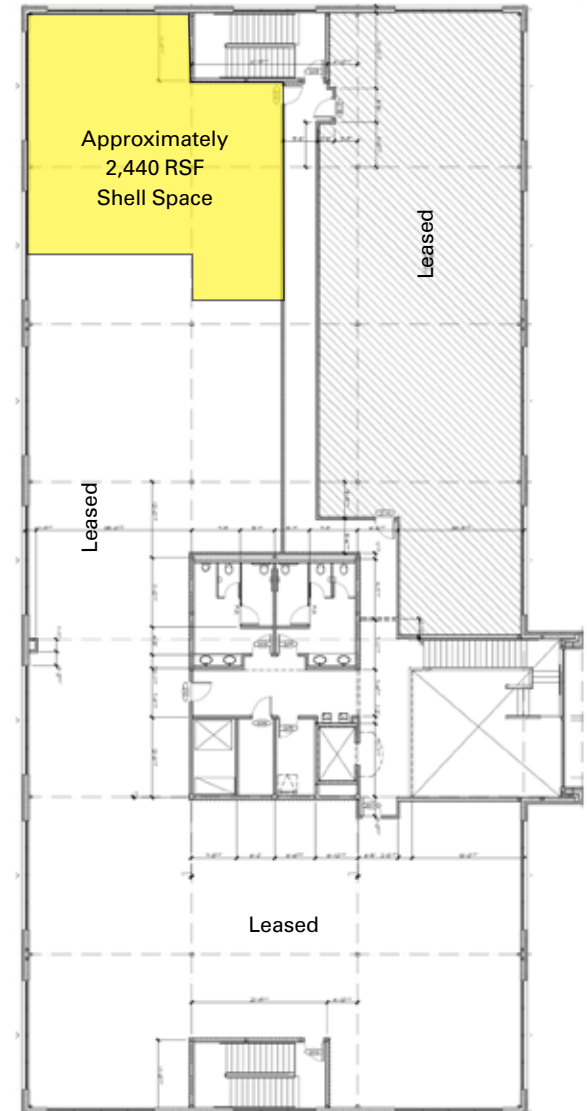
Second Floor Shell Space

- **Approximately 2,440 rsf**
- Northwest corner office space

First Floor



Second Floor



Aerial



Aerial

