



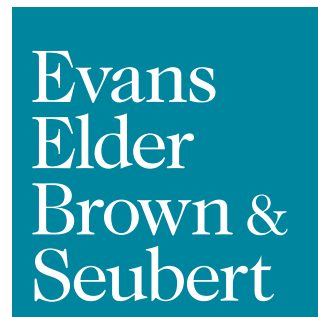
**FOR LEASE**

# Sports Way Business Park

3783 International Ct.  
Springfield OR 97477

## CLASS A SPACE SUITABLE FOR GENERAL OFFICE OR MEDICAL USE

- Ground floor and second floor space available
- Located in the heart of the Gateway District within 1 mile of RiverBend Campus
- Easy access to I-5 and Randy Pape Beltline Highway
- Good on-site parking
- \$2.00 per rentable square foot per month, fully serviced



COMMERCIAL REAL ESTATE

## CONTACT

**Stephanie Seubert**  
stephanie@eebcre.com

**Alan Evans**  
alan@eebcre.com

**(541) 345-4860**

Licensed in the State of Oregon.

# 1st Floor Office Space

3783 International Ct.  
Springfield OR 97477

Evans  
Elder  
Brown &  
Seubert

COMMERCIAL REAL ESTATE

## CONTACT

Stephanie  
Seubert

stephanie@eebcre.com

Alan  
Evans

alan@eebcre.com

(541) 345-4860

101 East Broadway  
Suite #101  
Eugene, OR 97401

Licensed in the  
State of Oregon.

## Suite 140

**APPROXIMATELY 2,248 RSF**

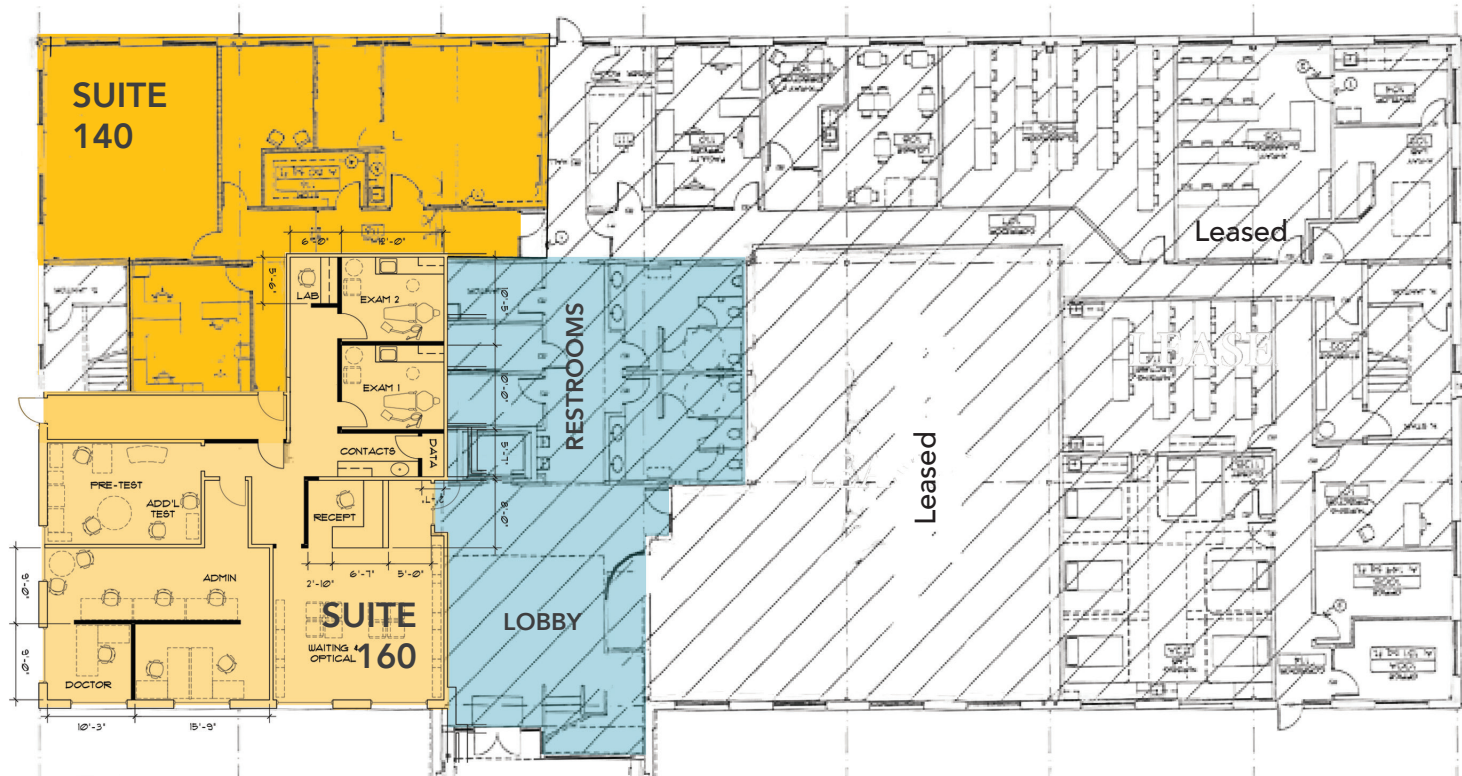
(CAN COMBINE WITH SUITE 160)

- Ground floor space
- Currently configured with 3 large rooms and one small office
- Access to common area restrooms off of main lobby

## Suite 160

**APPROXIMATELY 2,407 RSF**

- Ground floor space directly off the main lobby
- Currently configured with reception area, exam rooms and 2 large private offices
- Space includes plumbing in exam rooms
- Access to common area restrooms



# Second Floor Office Space

3783 International Ct.  
Springfield OR 97477

Evans  
Elder  
Brown &  
Seubert

COMMERCIAL REAL ESTATE

## CONTACT

**Stephanie  
Seubert**

stephanie@eebcre.com

**Alan  
Evans**

alan@eebcre.com

**(541) 345-4860**

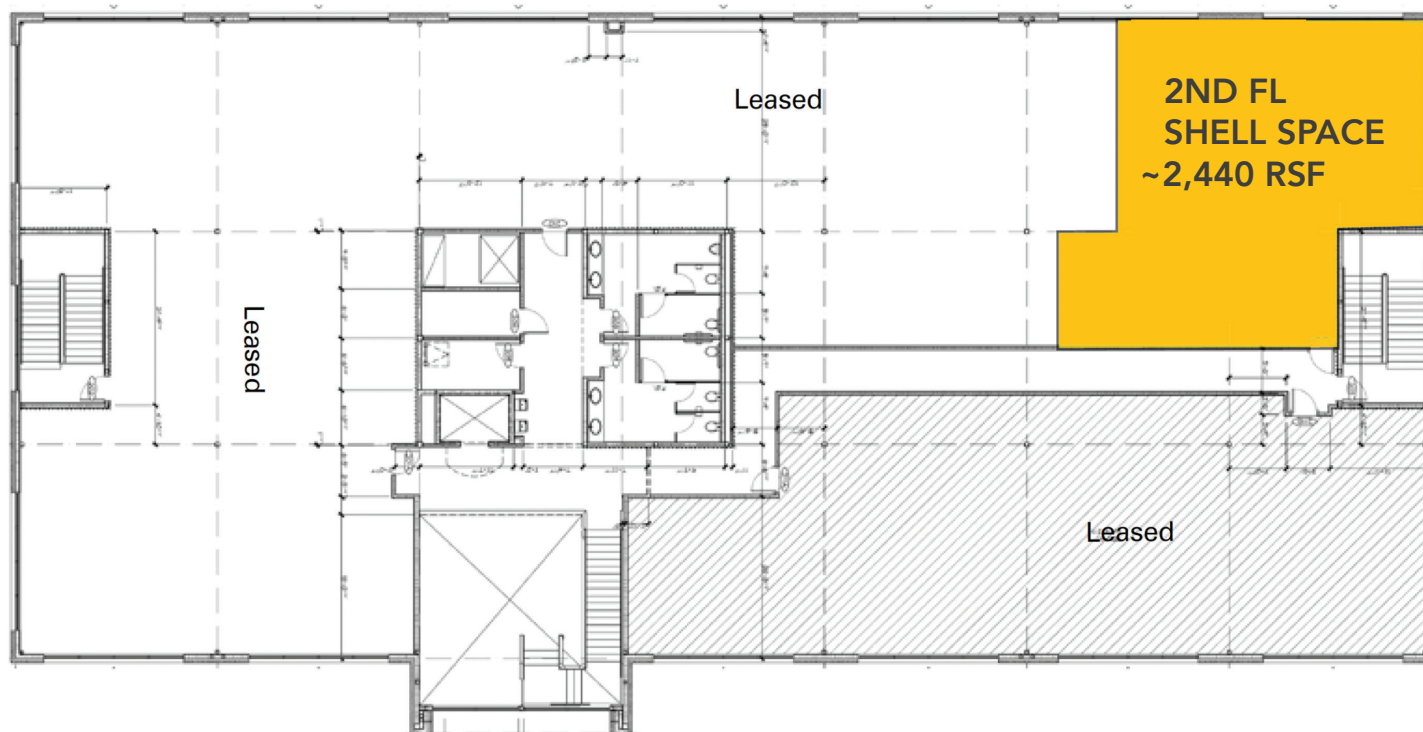
101 East Broadway  
Suite #101  
Eugene, OR 97401

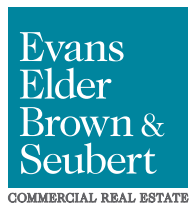
Licensed in the  
State of Oregon.

## 2nd Floor Shell Space

**APPROXIMATELY 2,440 RSF**

- Shell space located on the 2nd floor
- Large south facing windows
- Access to common area restrooms





## CONTACT

**Stephanie Seubert**  
stephanie@eebcre.com

**Alan Evans**  
alan@eebcre.com

**(541) 345-4860**