

Evans  
Elder  
Brown &  
Seubert

COMMERCIAL REAL ESTATE

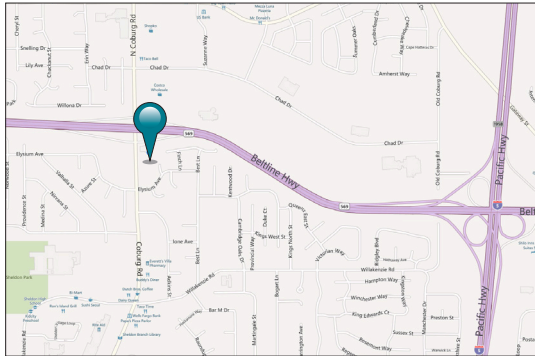
101 E. Broadway  
Suite 101  
Eugene, OR 97401  
(541) 345-4860

[eebcre.com](http://eebcre.com)

## FOR LEASE

### Holly Square

2295 Coburg Road, Eugene, OR



### CONTACT

Stephanie Seubert  
(541) 345-4860  
[stephanie@eebcre.com](mailto:stephanie@eebcre.com)

Licensed in the State of Oregon



## Class "A" Office Space

### Holly Square

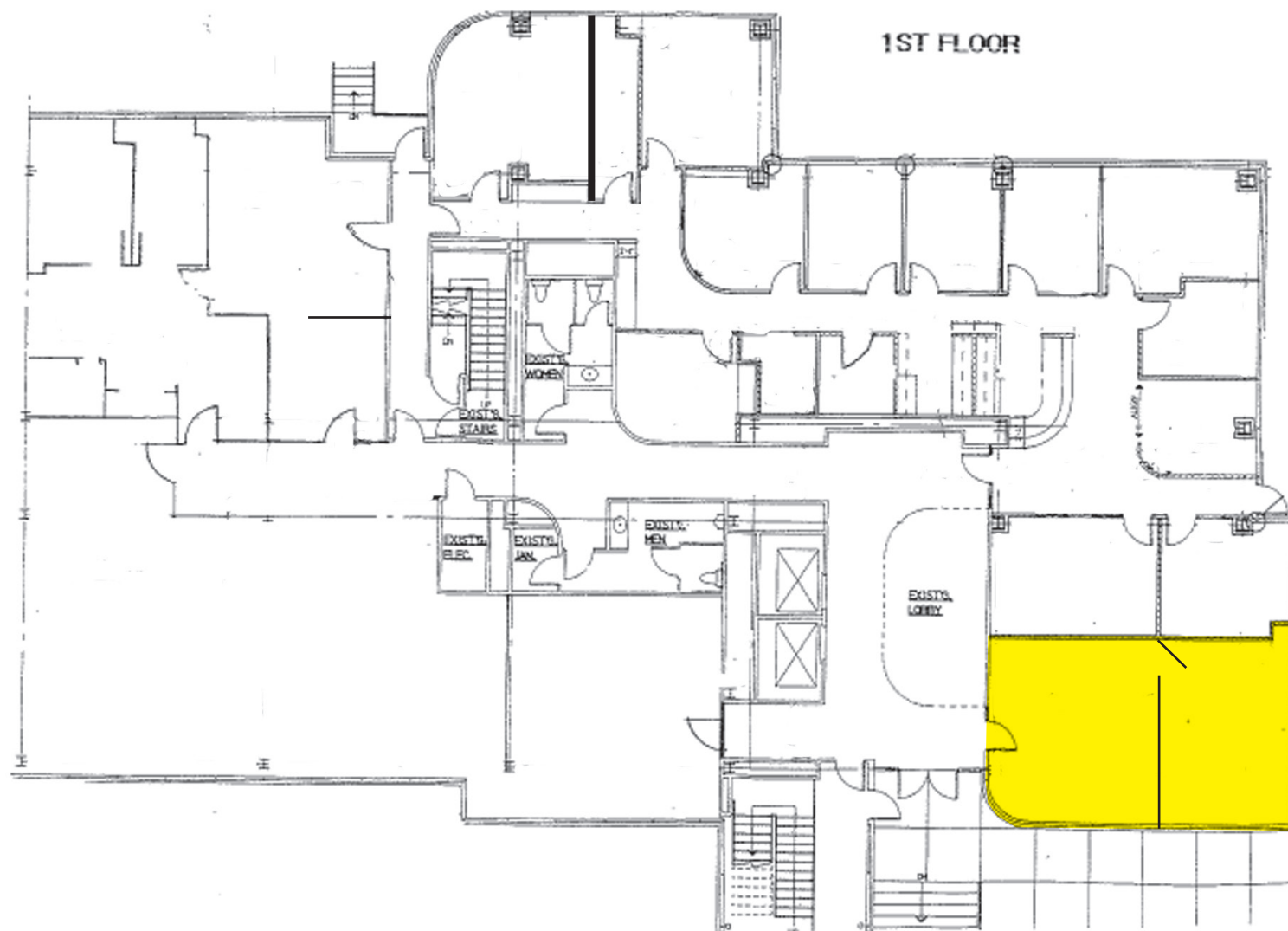
- Quality office space
- Plentiful parking
- Excellent location at Coburg Road & Beltline Hwy Intersection
- **\$1.45 per square foot, per month, modified gross**  
Tenant pays their pro-rata share of utilities, janitorial and garbage service (approx. 27¢/sf/mo)

The information in this package was gathered from sources deemed reliable, however Evans Elder Brown & Seubert makes no representation or warranty of the accuracy of the information. Any buyer or tenant considering a purchase or lease of this property should confirm any and all information relied upon in making the decision to purchase or lease prior to finalizing the transaction and bears the risk of all inaccuracies.

# Floor Plan – First Floor

## Suite 101

- Approximately 640 rsf
- Space includes entry with reception area and one large private office
- Large windows provide abundant natural light
- Access to common area restrooms

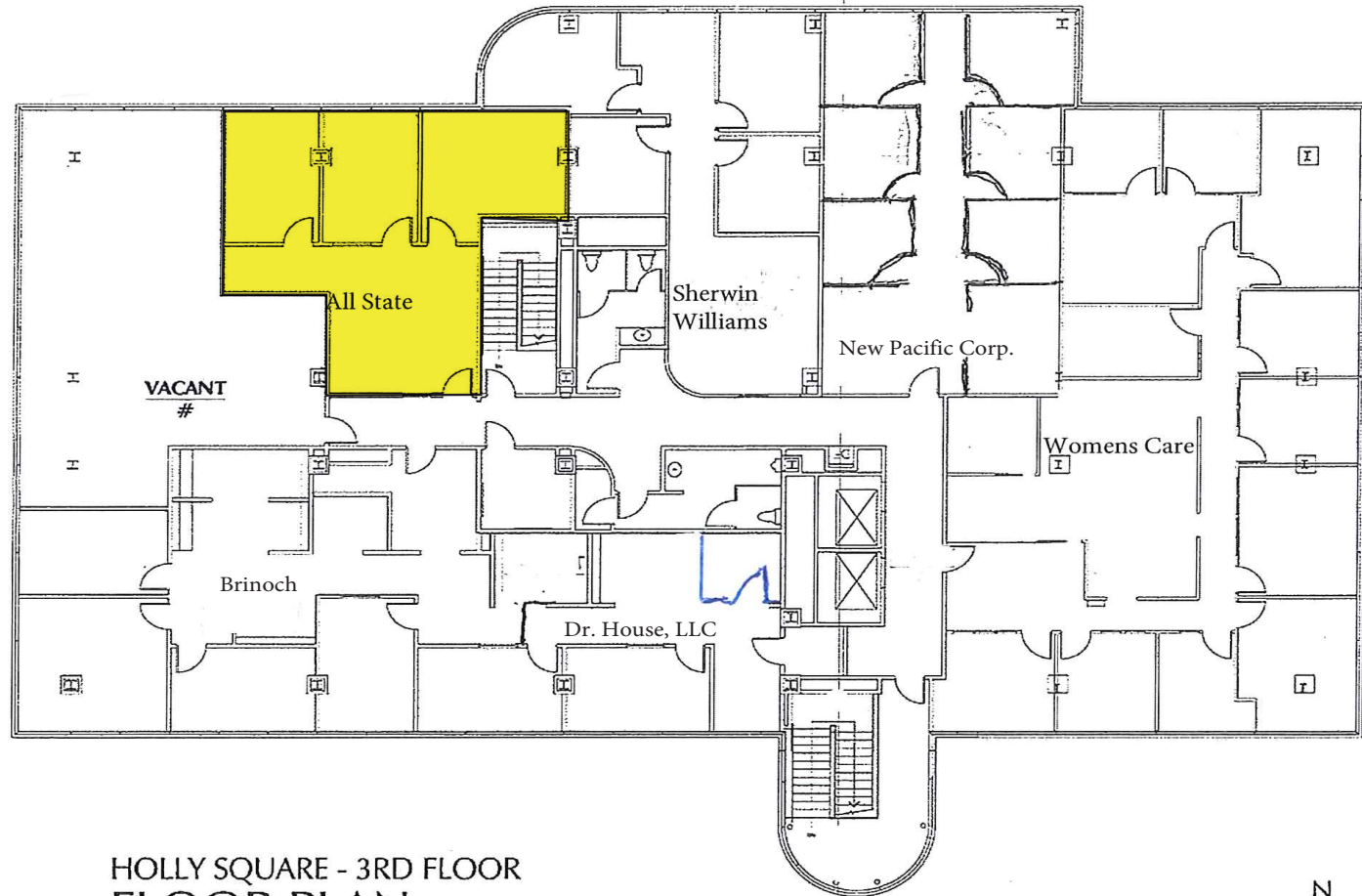




# Floor Plan - Third Floor

## Suite 310

- Approximately 899 rsf
- Space includes entry with reception area and three private offices
- Large windows provide abundant natural light
- Access to common area restrooms



1  
HOLLY SQUARE - 3RD FLOOR  
FLOOR PLAN  
1/16" = 1'-0"

TBG ARCHITECTS & PLANNERS/INC  
5.7.08

