

**Evans  
Elder  
Brown &  
Seubert**

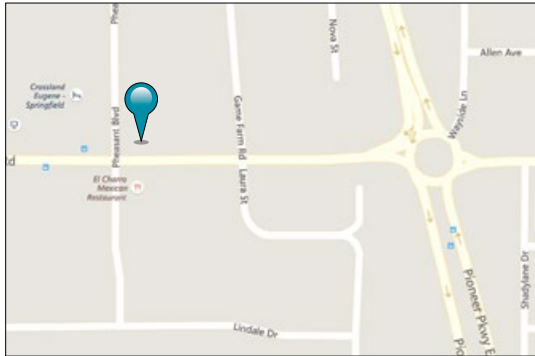
COMMERCIAL REAL ESTATE

101 E. Broadway  
Suite 101  
Eugene, OR 97401  
(541) 345-4860

*eebcre.com*

## FOR LEASE

498 Harlow Road, Suite 4  
Eugene, Oregon



### CONTACT

**Jeff Elder**  
jeff@eebcre.com

**Ashley Hope Elder**  
ashley@eebcre.com

(541) 345-4860

Licensed in the State of Oregon



## Professional Dental Suite

- Approximately 2,150 square feet
- Seven (7) operatory areas / two (2) offices
- Three (3) restrooms
- On-site parking
- \$6,000.00 per month modified gross

*The information in this package was gathered from sources deemed reliable, however Evans Elder Brown & Seubert makes no representation or warranty of the accuracy of the information. Any buyer or tenant considering a purchase or lease of this property should confirm any and all information relied upon in making the decision to purchase or lease prior to finalizing the transaction and bears the risk of all inaccuracies.*

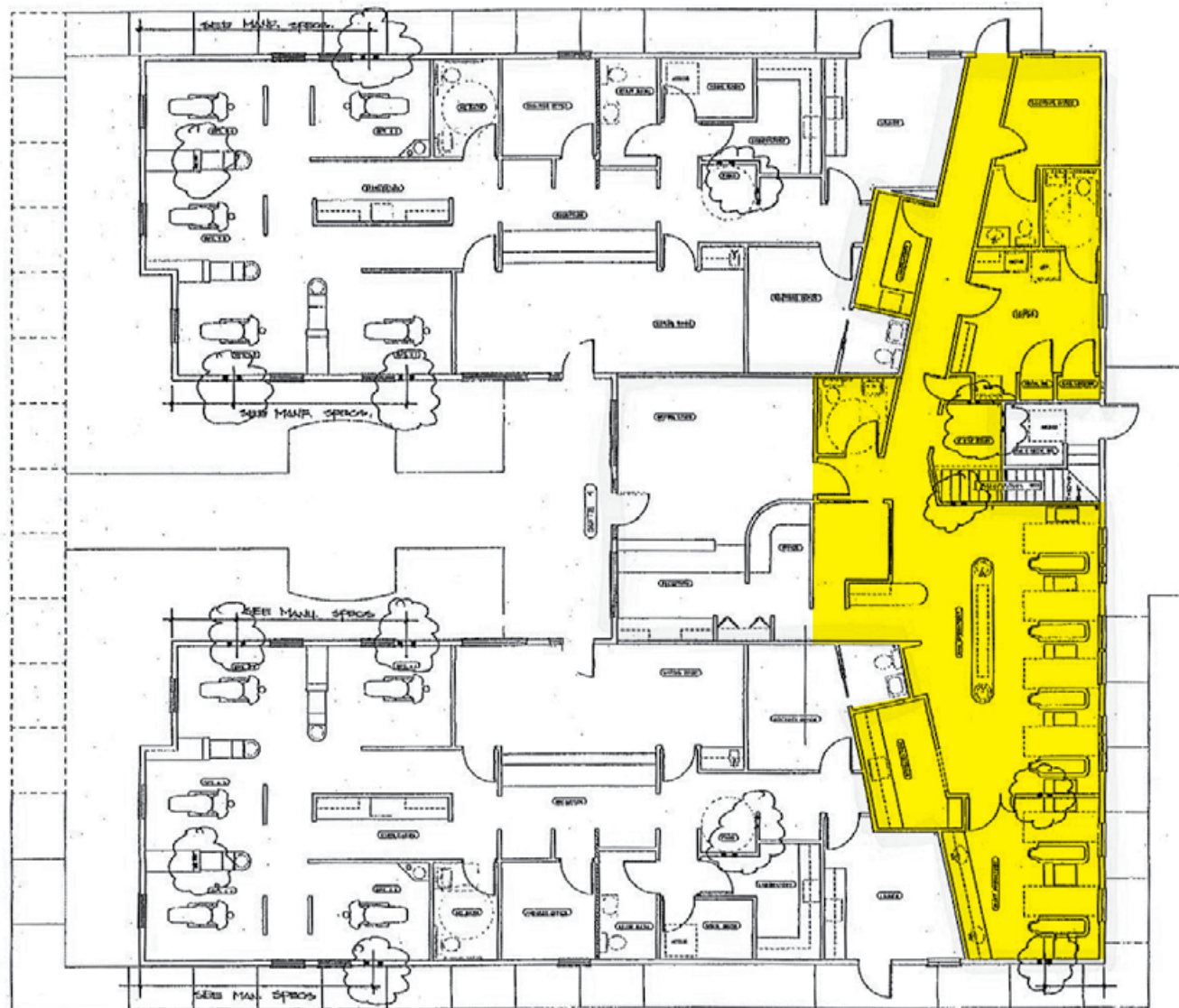
# Overview



## Dental Suite

- Reception area
- 7 operatory areas
- 2 offices
- Lab
- X-ray area
- 3 restrooms
- Staff lounge
- On-site parking

# Suite 4 Floor Plan



# Photographs



# Location



# Location

