



FOR LEASE

Retail Building and Abundant Parking

2300 West 7th Avenue, Eugene, Oregon

Evans
Elder
Brown &
Seubert

COMMERCIAL REAL ESTATE

Retail Building and Abundant Parking

Previous Automotive Sales and Service

- 22,087 square feet
- Site 2.74 acres
- Zoned Community Commercial (C-2)
- \$1.20 per square foot, triple net

Building

- Built 1965
- 22,087 square feet building size
- Showroom 3,712 square feet
- Service area 16,422 square feet
- Office 1,754 square feet

Property

- Site 2.74 acres
- Zoned Community Commercial (C-2)

Lane County Assessors Information

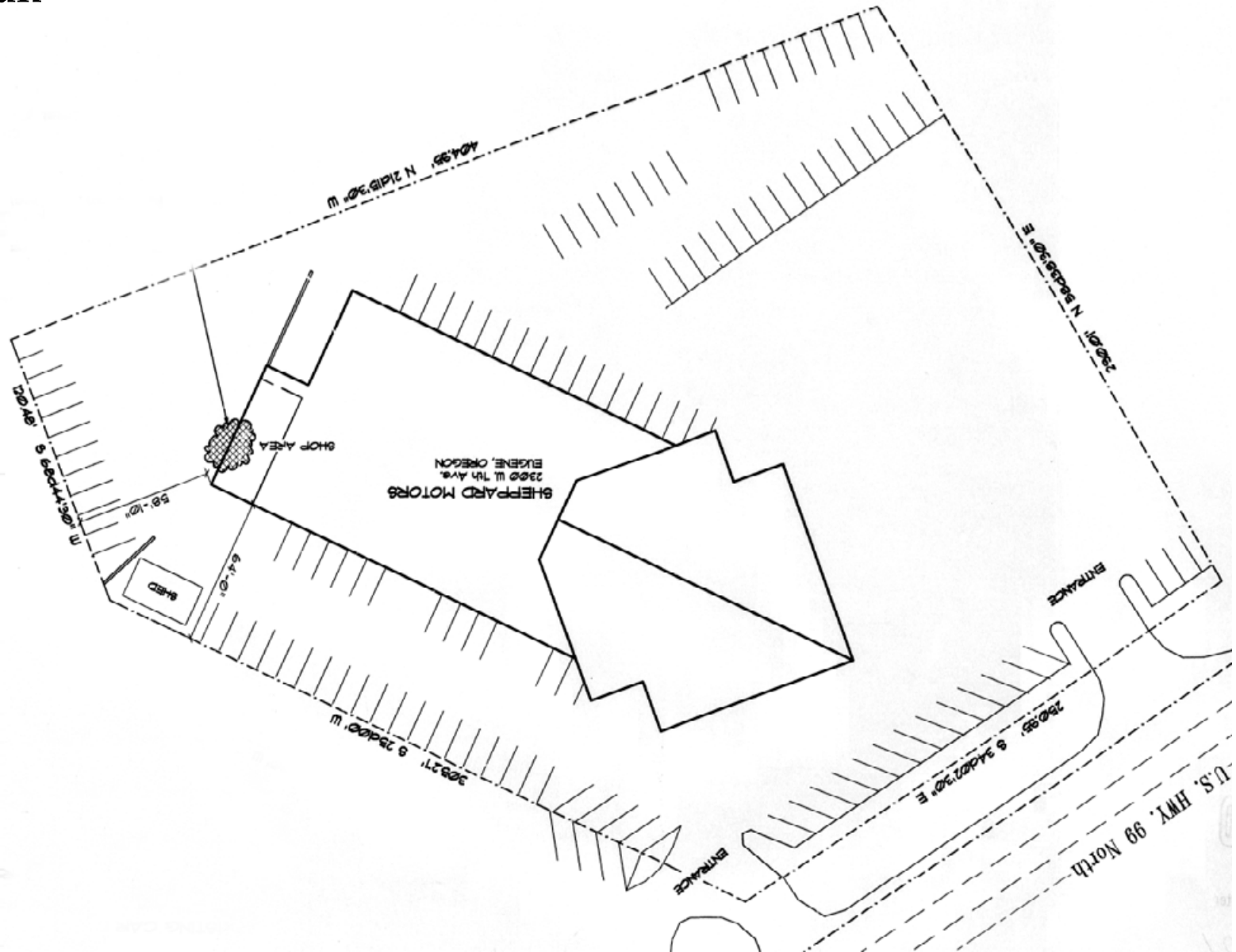
- Tax Map and Lot No. 17-04-35-11-00100
- 2022-2023 Real Property Taxes \$39,756

Adjacent 2366 West 7th Avenue also available

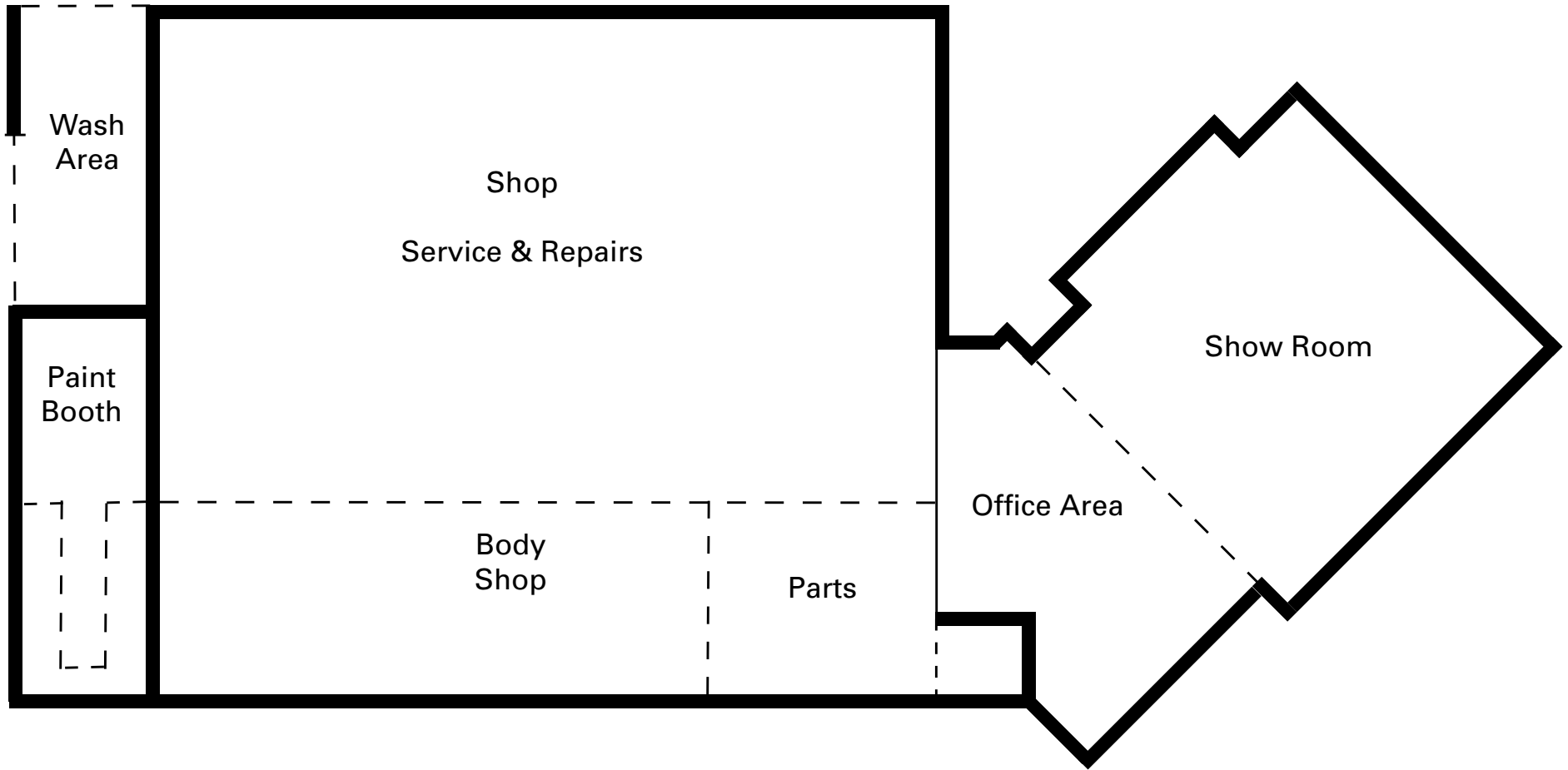




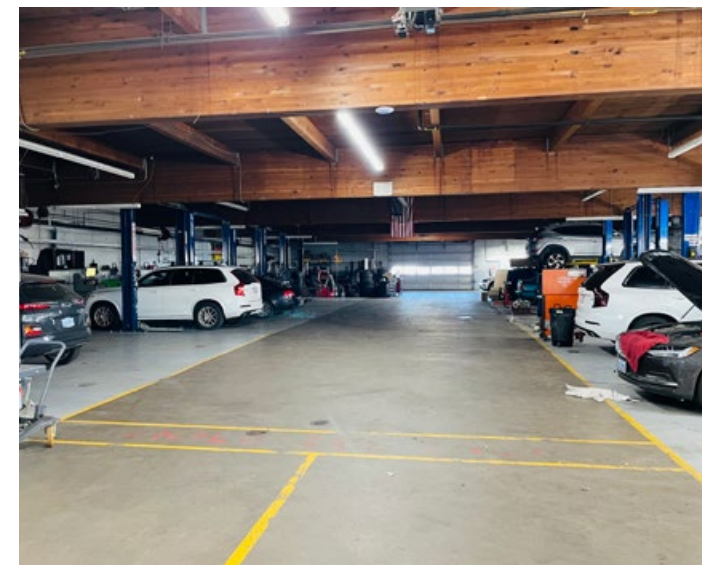
Site Plan



Floor Plan



Photographs



For Lease

2300 West 7th Avenue
Adjacent 2366 West 7th Avenue also
available

For more information, contact:

Jeff Elder
cell: (541) 953-2402
jeff@eebcre.com

Ashley Hope Elder
cell: (541) 912-8539
ashley@eebcre.com

(541) 345-4860

101 E. Broadway, Suite 101
Eugene, OR 97401
(541) 345-4860

eebcre.com

