



FOR LEASE

**Evans
Elder
Brown &
Seubert**

COMMERCIAL REAL ESTATE

Retail Building & Abundant Parking
2366 West 7th Avenue, Eugene, OR 97402

CONTACT

Jeff Elder
jeff@eebcre.com

Ashley Hope Elder
ashley@eebcre.com

(541) 345-4860

Retail Building and Abundant Parking

Lease \$1.50 per square foot, triple net

Previous Automotive Sales and Service

- 9,548 square feet
- Site Size: Approximately 1.16 acres
- Zoned Community Commercial (C-2)

Building

- Built 2003
- 9,548 square feet building size
- Showroom
- Service area
- Offices

Property

- Approximately 1.16 acres
- Zoned Community Commercial (C-2)

Lane County Assessors Information

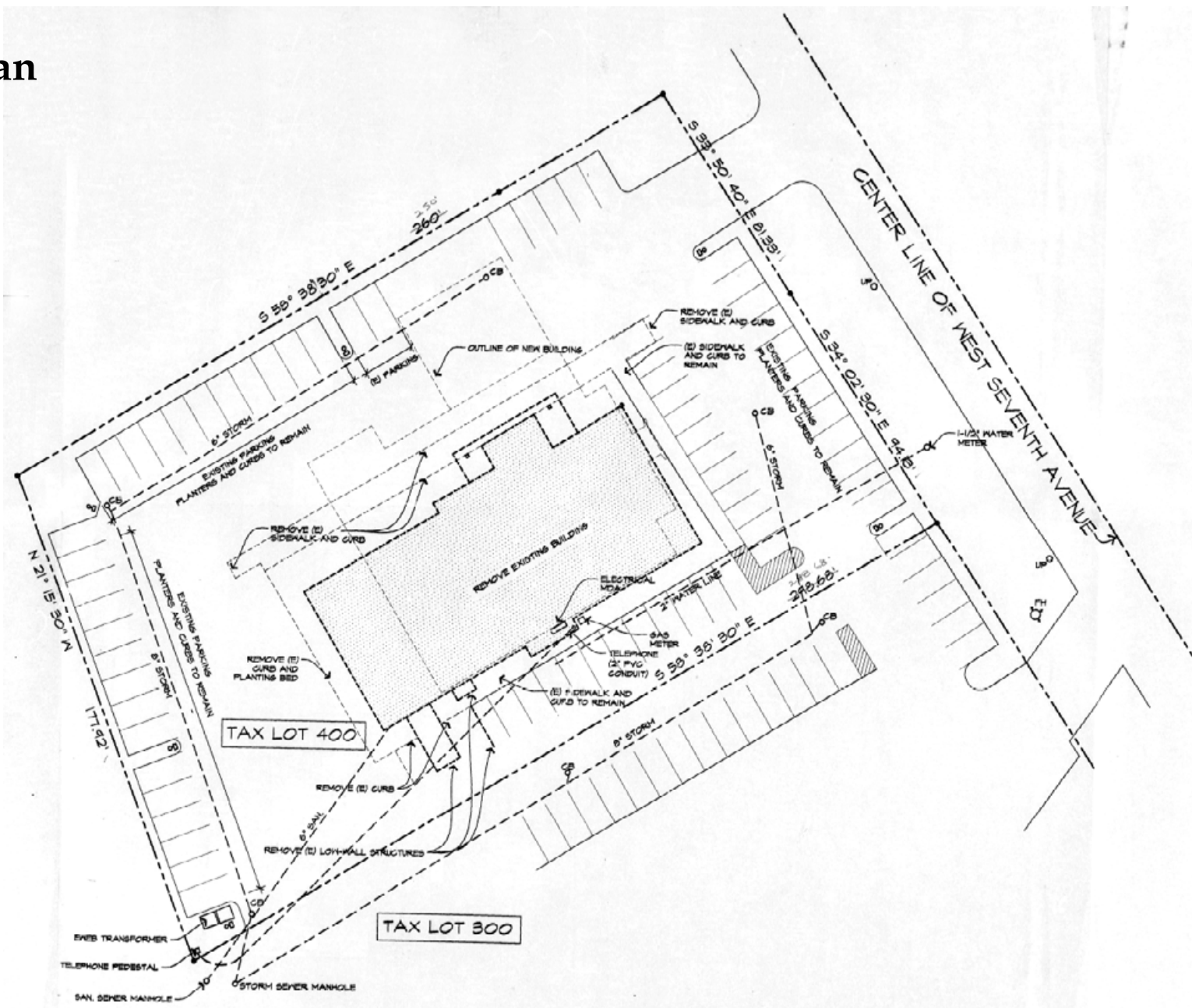
- Tax Map and Lot No. 17-04-35-11-00300
- Tax Map and Lot No. 17-04-35-11-00400
- 2023-2024 Real Property Taxes \$22,988.39

Adjacent 2300 West 7th Avenue also available for sale or lease

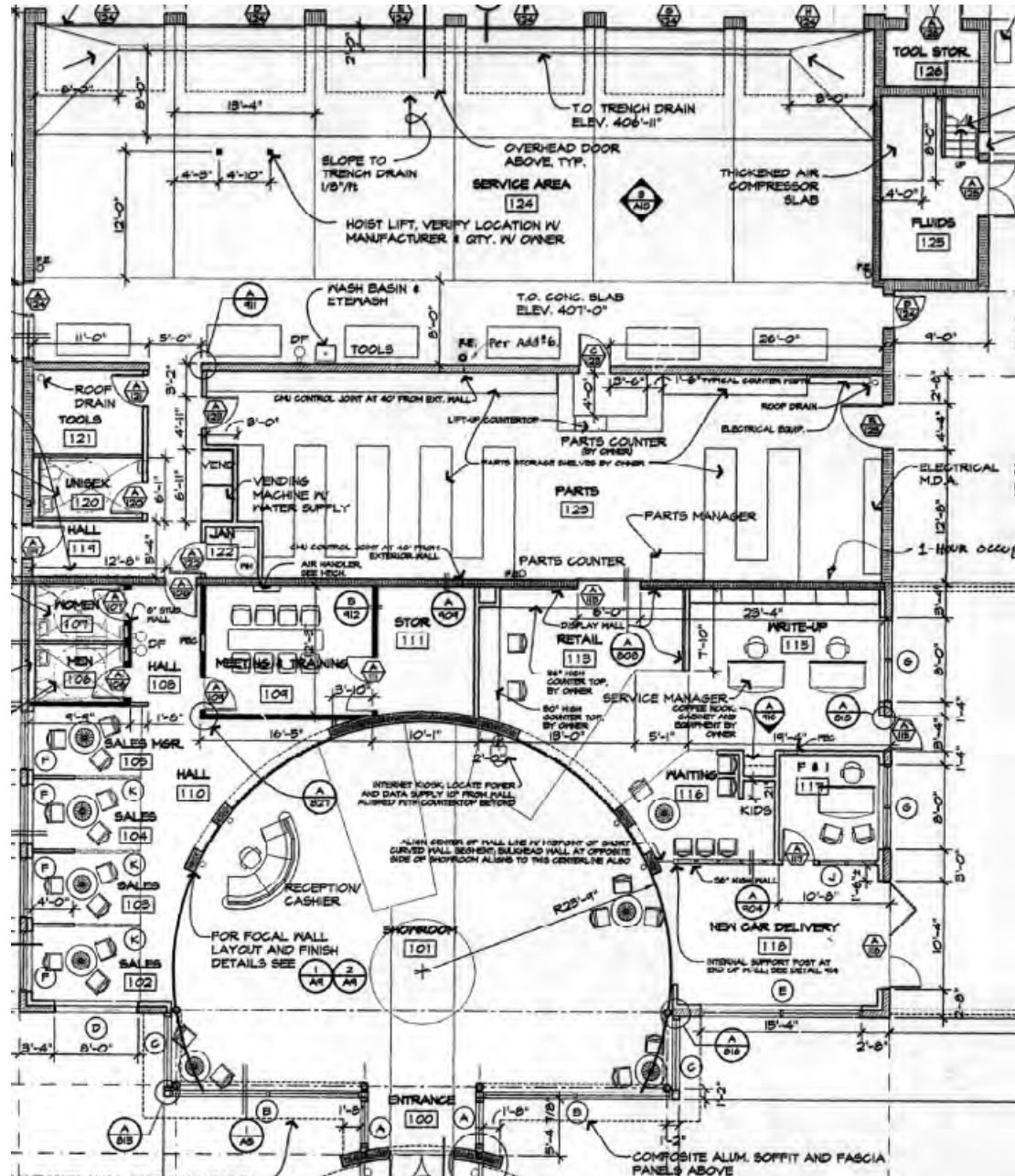




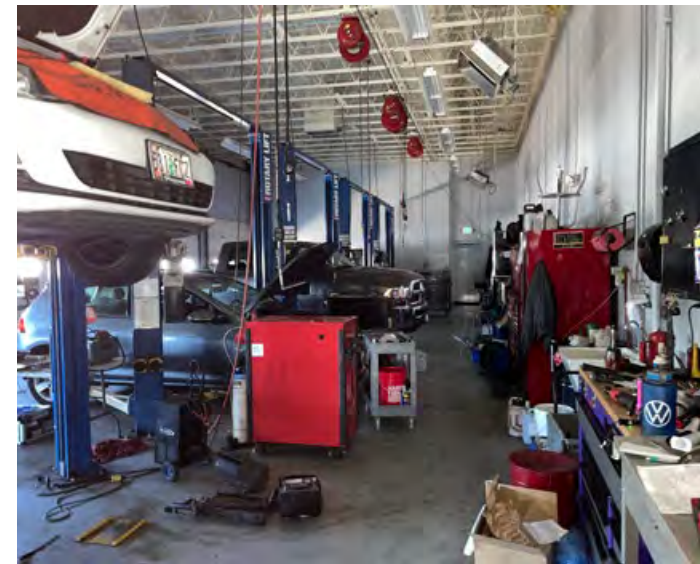
Site Plan



Floor Plan



Photographs



For Lease

2300 West 7th Avenue
*Adjacent 2366 West 7th Avenue also
available*

For more information, contact:

Jeff Elder
cell: (541) 953-2402
jeff@eebcre.com

Ashley Hope Elder
cell: (541) 912-8539
ashley@eebcre.com

(541) 345-4860

101 E. Broadway, Suite 101
Eugene, OR 97401
(541) 345-4860

eebcre.com

