

**Evans
Elder
Brown &
Seubert**

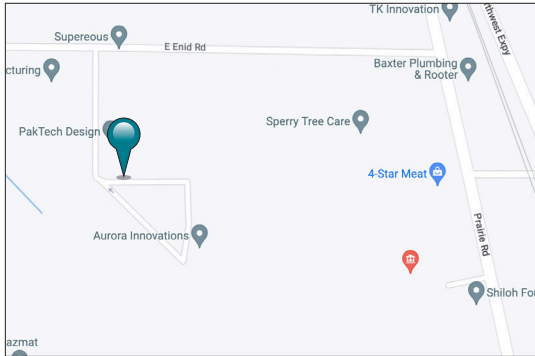
COMMERCIAL REAL ESTATE

101 E. Broadway
Suite 101
Eugene, OR 97401
(541) 345-4860

eebcre.com

FOR LEASE

29876 East Enid Road
Eugene, Oregon 97402



CONTACT

John Brown
john@eebcre.com

Stephanie Seubert
stephanie@eebcre.com
(541) 345-4860

Licensed in the State of Oregon

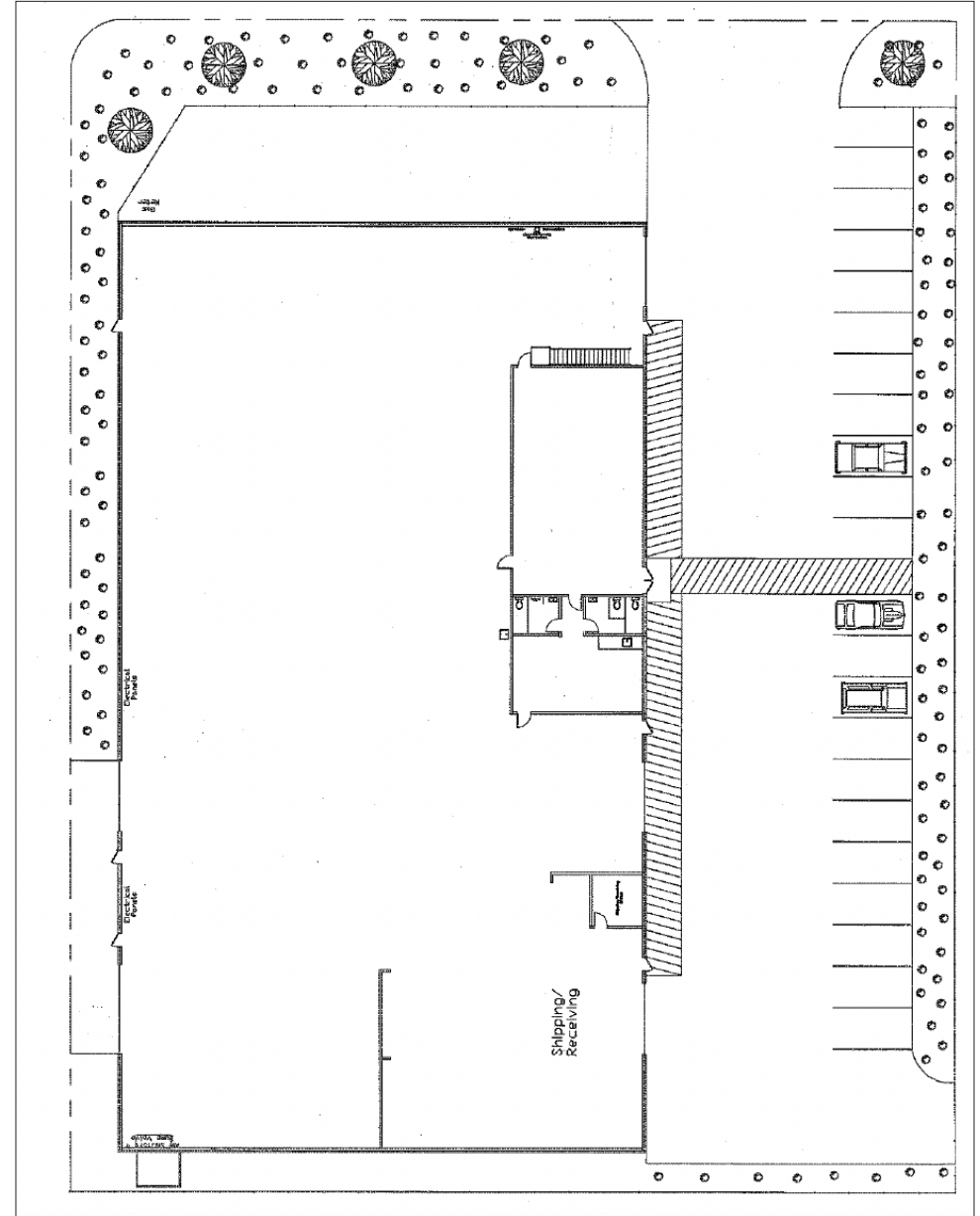


West Eugene Warehouse Space - Available Q1, 2024

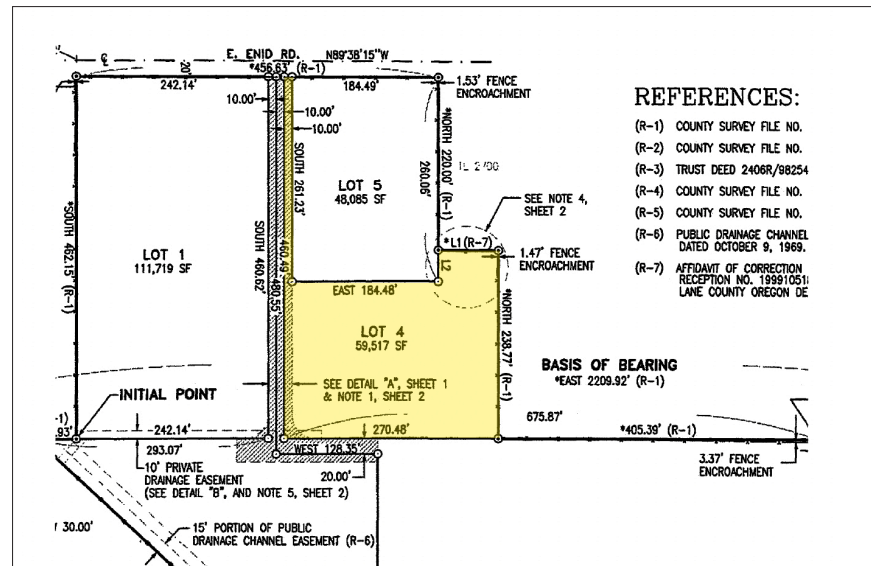
29876 East Enid Road

- Approximately 25,200 total square feet with approximately 2,340 square feet of office
- This steel frame, metal-sided building is fully sprinkled and has polished concrete floors
- Roof height is 20' at eave and 38' at peak
- 3 Phase 480/277 power with a 120 KVA transformer
- 75¢ per square foot, per month, triple net (real property taxes are approximately 13¢ per square foot, per month)

Floor Plan



Site Plan



Aerial View

