

**Evans  
Elder  
Brown &  
Seubert**

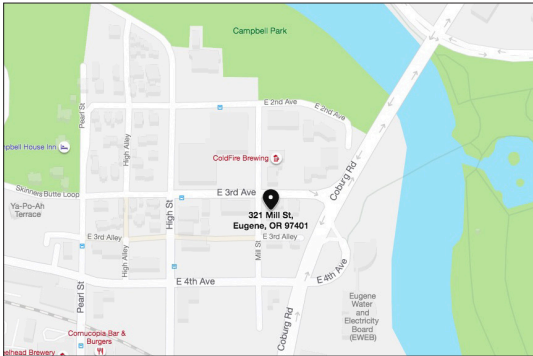
COMMERCIAL REAL ESTATE

101 E. Broadway  
Suite 101  
Eugene, OR 97401  
(541) 345-4860

*eebcre.com*

## FOR LEASE

321 Mill Street Unit 3  
Eugene, Oregon 97401



### CONTACT

**Stephanie Seubert**  
stephanie@eebcre.com

**Lilly Storment**  
lilly@eebcre.com

(541) 345-4860



## High-Quality Urban Live/Work Space **The Watershed Building**

- Approximately 1,800 square feet of Live/Work space available
- High-quality urban space with operable windows, excellent natural light and access from secure courtyard
- Visitor/Client Parking in adjacent parking lot
- One reserved parking space
- Zoned C-2 - Community Commercial
- \$3,100.00 per month, modified gross

Licensed in the State of Oregon

*The information in this package was gathered from sources deemed reliable, however Evans Elder Brown & Seubert makes no representation or warranty of the accuracy of the information.*

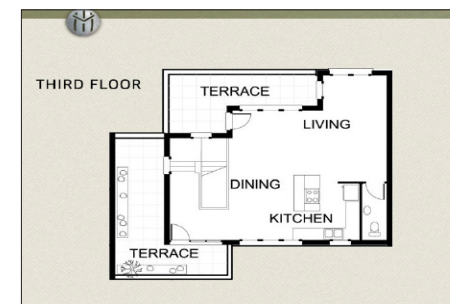
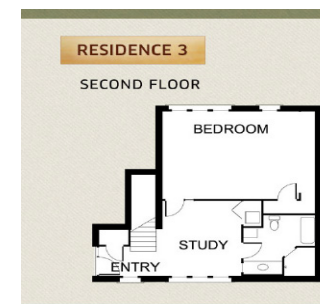
*Any buyer or tenant considering a purchase or lease of this property should confirm any and all information relied upon in making the decision to purchase or lease prior to finalizing the transaction and bears the risk of all inaccuracies.*



## Unit 3



- Square footage: 1,800
- 2 levels - includes 1 bedroom / office
- 2 bathrooms (1 1/2 bath, 1 full bath)
- 2 large terraces
- Study
- 1 reserved parking space





# Aerial Map

