



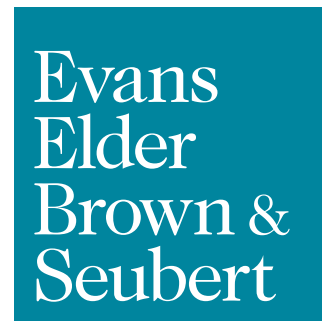
FOR LEASE

Oakway Center Retail/Office

Oakway Center
Eugene OR 97401

OAKWAY CENTER

- Available Spaces:
 - Suite 19 (Retail): 534 SF
 - Suite 204: 1,645 SF
 - Suite 210 (Salon): 1,175 SF
 - Suite 250: 1,215 SF
 - Suite 255: 770 SF
 - Suite 260: 842 SF
- Excellent Oakway Center Location
- Good On-Site Parking



COMMERCIAL REAL ESTATE

CONTACT

Stephanie Seubert
stephanie@eebcre.com

Alan Evans
alan@eebcre.com

Jackson Seubert
jackson@eebcre.com

(541) 345-4860

Suite 204

Oakway Center,
Eugene OR 97401

**Evans
Elder
Brown &
Seubert**

COMMERCIAL REAL ESTATE

CONTACT

**Stephanie
Seubert**

stephanie@eebcre.com

**Alan
Evans**

alan@eebcre.com

**Jackson
Seubert**

jackson@eebcre.com

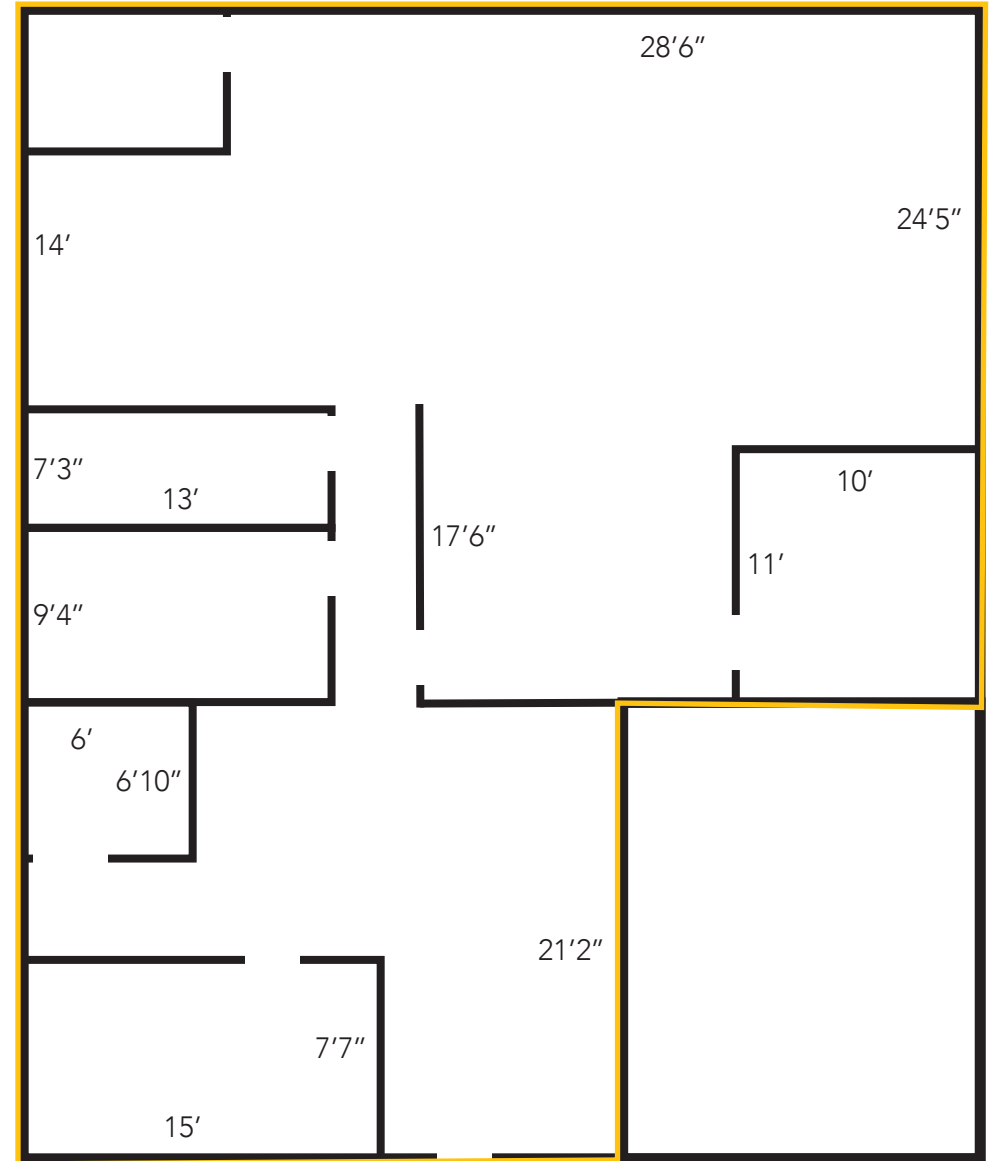
(541) 345-4860

101 East Broadway
Suite #101
Eugene, OR 97401

Licensed in the
State of Oregon.

Space Highlights

- Approximately 1,645 square feet on the second floor of Oakway Center
- Reception area, large open work area, five (5) private offices, storage room
- Second floor space is fully accessible with elevator access
- \$1.45 per square foot, per month, fully serviced



Suite 210

Oakway Center,
Eugene OR 97401

Evans
Elder
Brown &
Seubert

COMMERCIAL REAL ESTATE

CONTACT

**Stephanie
Seubert**

stephanie@eebcre.com

**Alan
Evans**

alan@eebcre.com

**Jackson
Seubert**

jackson@eebcre.com

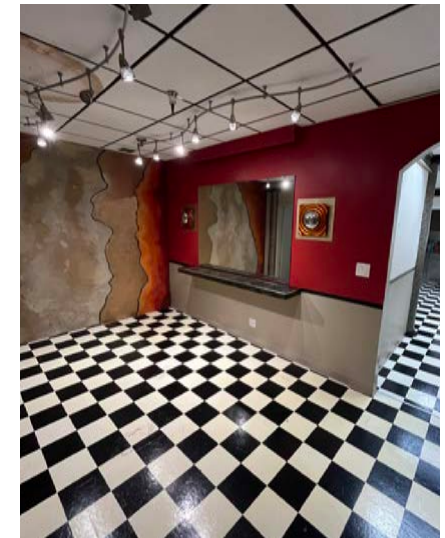
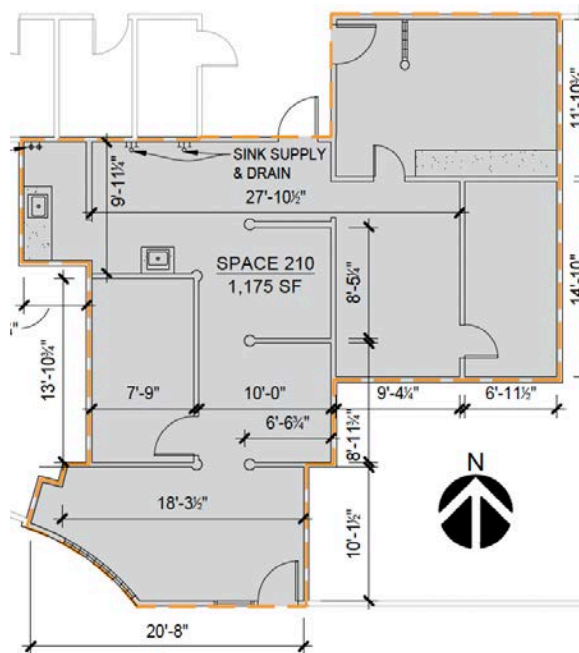
(541) 345-4860

101 East Broadway
Suite #101
Eugene, OR 97401

Licensed in the
State of Oregon.

Space Highlights

- Approximately 1,175 square feet on the second floor of Oakway Center
- Large salon space with reception, lots of existing plumbing, 5 work stations, and abundant storage
- Second floor space is fully accessible with elevator access
- \$1.45 per square foot, per month, fully serviced



Suite 250

Oakway Center,
Eugene OR 97401

Evans
Elder
Brown &
Seubert

COMMERCIAL REAL ESTATE

CONTACT

**Stephanie
Seubert**

stephanie@eebcre.com

**Alan
Evans**

alan@eebcre.com

**Jackson
Seubert**

jackson@eebcre.com

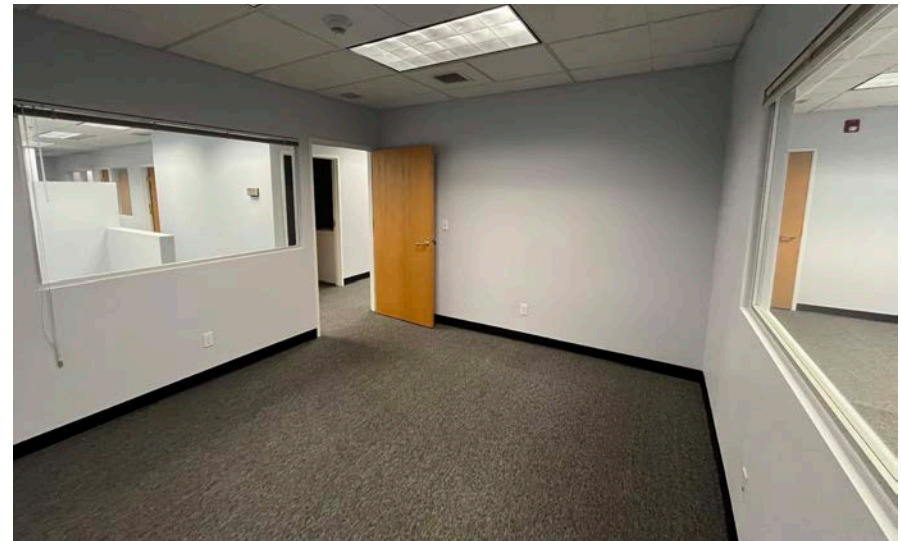
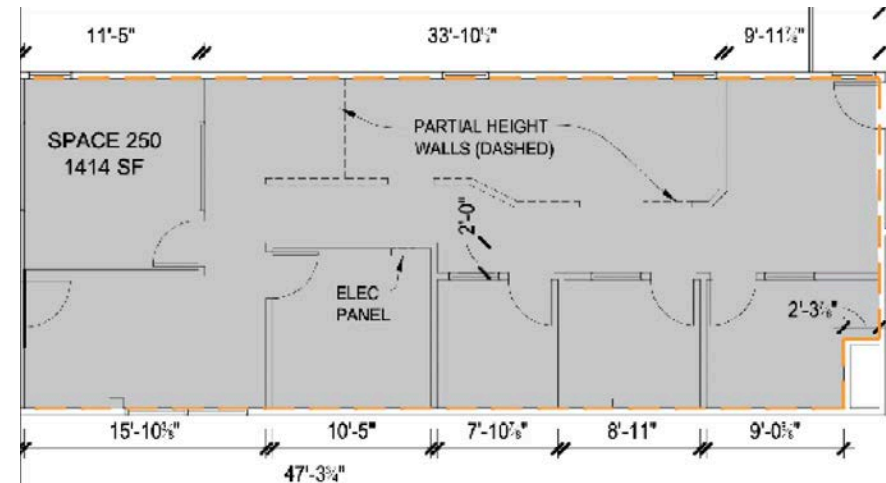
(541) 345-4860

101 East Broadway
Suite #101
Eugene, OR 97401

Licensed in the
State of Oregon.

Space Highlights

- Approximately 1,250 square feet on the second floor of Oakway Center
- Semi-open office space with break room and four (4) private offices
- Second floor space is fully accessible with elevator access
- \$1.45 per square foot, per month, fully serviced



Suite 255

Oakway Center,
Eugene OR 97401

**Evans
Elder
Brown &
Seubert**

COMMERCIAL REAL ESTATE

CONTACT

**Stephanie
Seubert**

stephanie@eebcre.com

**Alan
Evans**

alan@eebcre.com

**Jackson
Seubert**

jackson@eebcre.com

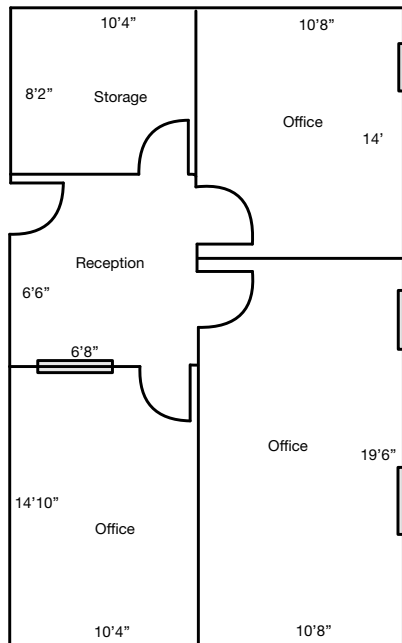
(541) 345-4860

101 East Broadway
Suite #101
Eugene, OR 97401

Licensed in the
State of Oregon.

Space Highlights

- Approximately 770 square feet on the second floor of Oakway Center
- Small reception area, three (3) large offices, and a large storage/copy room
- Second floor space is fully accessible with elevator access
- \$1.45 per square foot, per month, fully serviced



Suite 260

Oakway Center,
Eugene OR 97401

**Evans
Elder
Brown &
Seubert**

COMMERCIAL REAL ESTATE

CONTACT

**Stephanie
Seubert**

stephanie@eebcre.com

**Alan
Evans**

alan@eebcre.com

**Jackson
Seubert**

jackson@eebcre.com

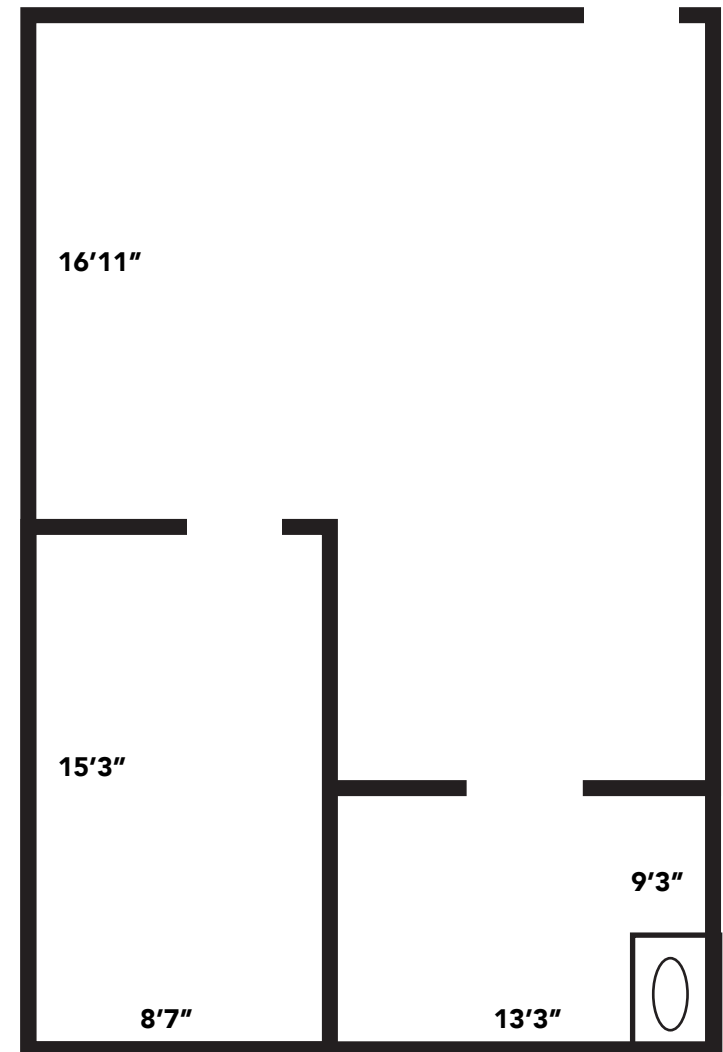
(541) 345-4860

101 East Broadway
Suite #101
Eugene, OR 97401

Licensed in the
State of Oregon.

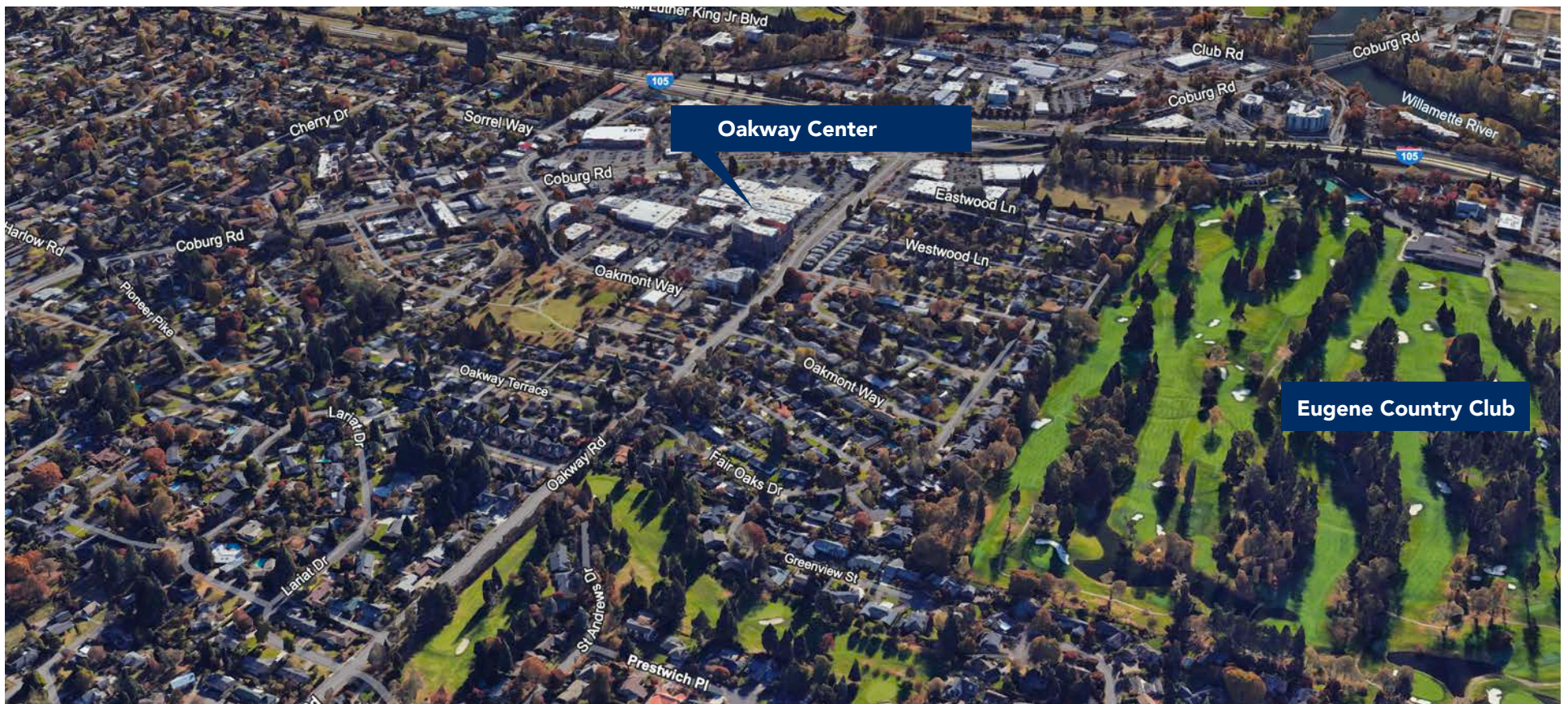
Space Highlights

- Approximately 872 square feet on the second floor of Oakway Center
- Large open work area, one (1) private office, plumbed kitchenette/break room
- Second floor space is fully accessible with elevator access
- \$1.45 per square foot, per month, fully serviced

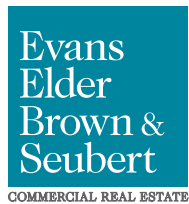


Location

Oakway Center,
Eugene OR 97401



Licensed in the
State of Oregon.



CONTACT

Stephanie Seubert
stephanie@eebcre.com

(541) 345-4860

Alan Evans
alan@eebcre.com

(541) 345-4860

Jackson Seubert
jackson@eebcre.com

(541) 345-4860