



# Building For Sale

1450 High St.  
Eugene, OR 97401

## Building Profile:

Building Area	8,201 SF
Site SF	34,413 SF
Sales Price	\$3,200,000
Built	1971
Parking	40 stalls
Zoning	General Office (GO)
County	Lane County
Lot No.	17-03-31-41-02900 17-03-31-44-01000

## Features:

- Double Drive-Thru
- 40 Parking Stalls
- Pylon Monument Signage
- Walker's Paradise (97)
- Neighboring: Residential (mainly college housing - single-family & multi-family apts), 7-Eleven, The Barber Shop, Vero Espresso, Toshi's Ramen, Falling Sky Brewing, The Bier Stein, McMenamins High Street Brewery & Café, Safeway, University of Oregon campus, and PeaceHealth Sacred Heart Medical Center

## Contact:

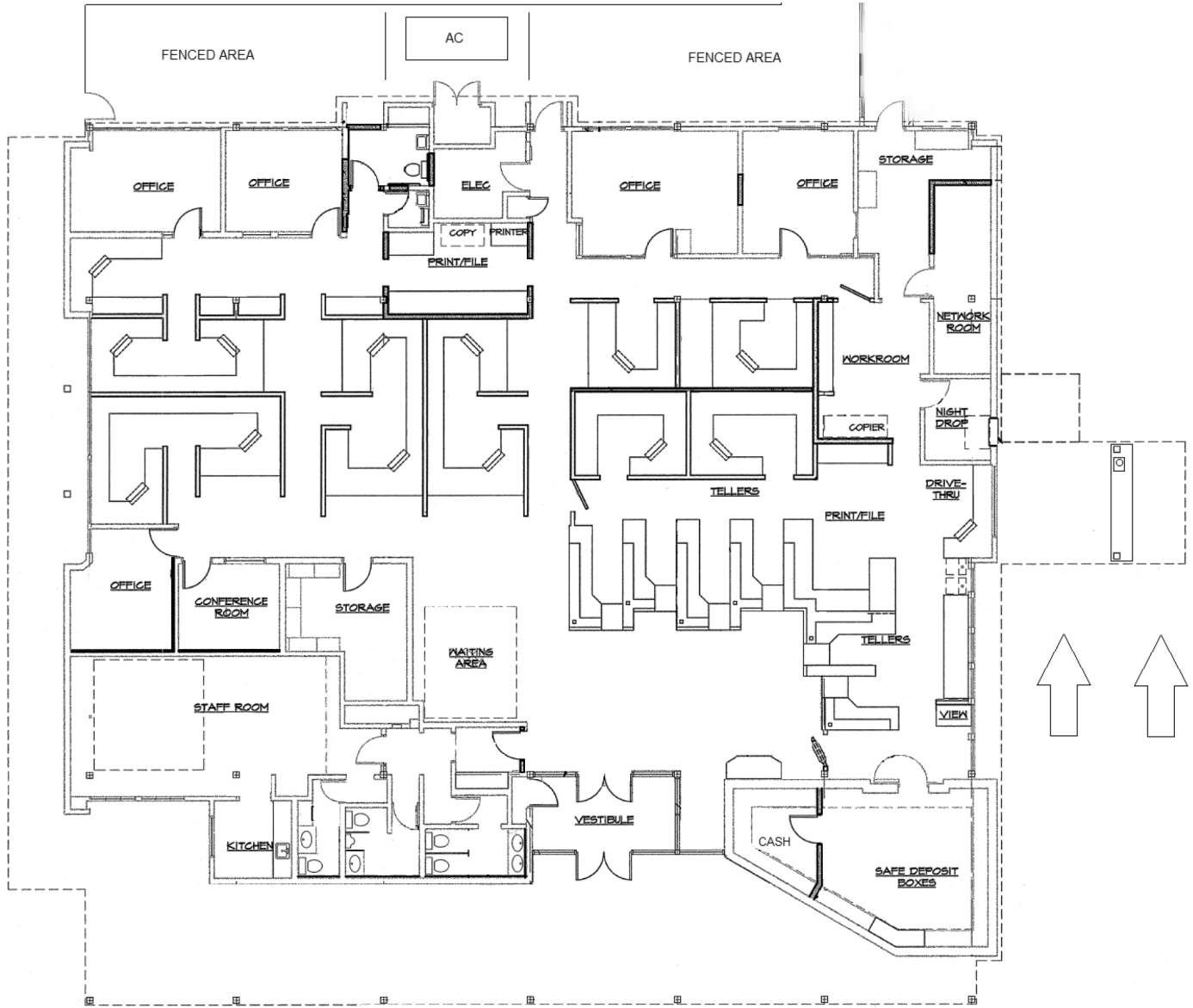


**Jeff Elder**  
541.345.4860  
jeff@eebcre.com



**Kelsey Machuca**  
503.679.2419  
kmachuca@cresa.com

# Floorplan



Exterior



Workspaces



## Building For Sale

1450 High St.  
Eugene, OR 97401

Teller windows

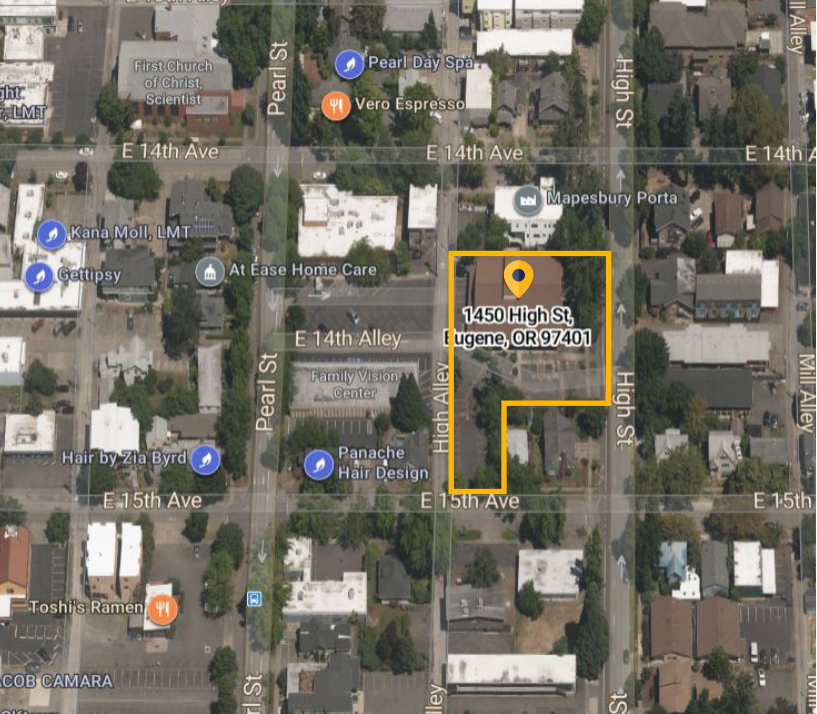


Drive-thru



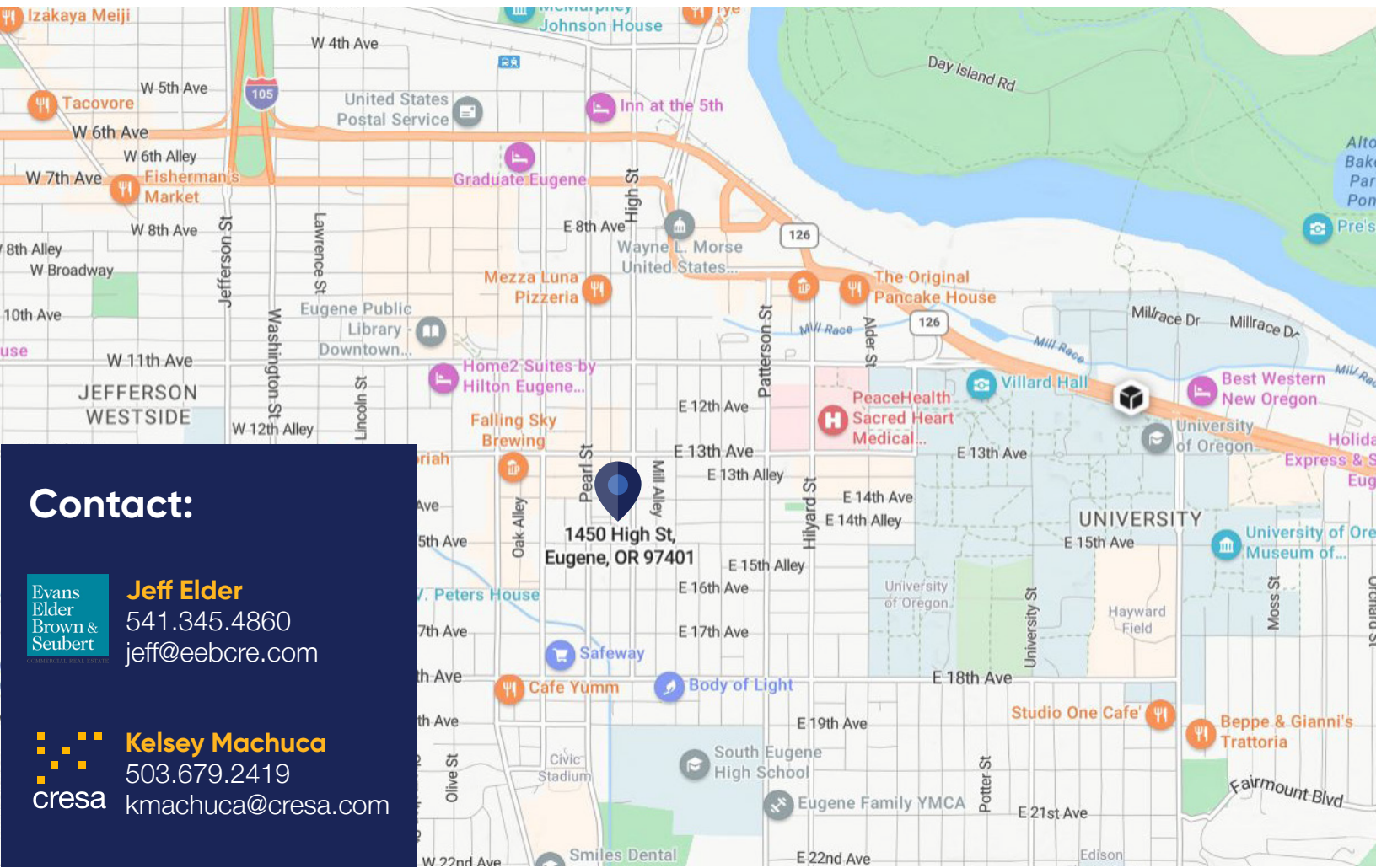
Vault





## Building For Sale

1450 High St.  
Eugene, OR 97401



### Contact:

Evans  
Elder  
Brown &  
Seubert

**Jeff Elder**  
541.345.4860  
jeff@eebcre.com

cresa

**Kelsey Machuca**  
503.679.2419  
kmachuca@cresa.com

cresa

Cresa © 2024. All rights reserved. The information contained in this document has been obtained from sources believed reliable. While Cresa does not doubt its accuracy, Cresa has not verified it and makes no guarantee, warranty, or representation about it. It is your responsibility to independently confirm its accuracy and completeness. Any projections, opinions, assumptions or estimates used are for example only and do not represent the current or future performance of the property. The value of this transaction to you depends on tax and other factors which should be evaluated by your tax, financial and legal advisors. You and your advisors should conduct a careful, independent investigation of the property to determine to your satisfaction the suitability of the property for your needs.