

**Evans  
Elder  
Brown &  
Seubert**

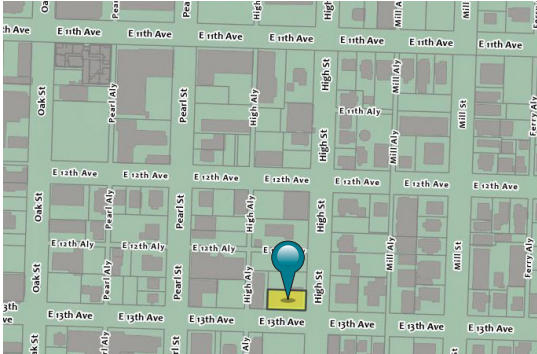
COMMERCIAL REAL ESTATE

101 E. Broadway  
Suite 101  
Eugene, OR 97401  
(541) 345-4860

*eebcre.com*

## FOR LEASE

265 East 13th Avenue  
Eugene, Oregon 97401



### CONTACT

**Jeff Elder**

[jeff@eebcre.com](mailto:jeff@eebcre.com)

**Ashley Hope Elder**

[ashley@eebcre.com](mailto:ashley@eebcre.com)

**(541) 345-4860**

Licensed in the State of Oregon



## 13th Avenue Retail Space at High Street

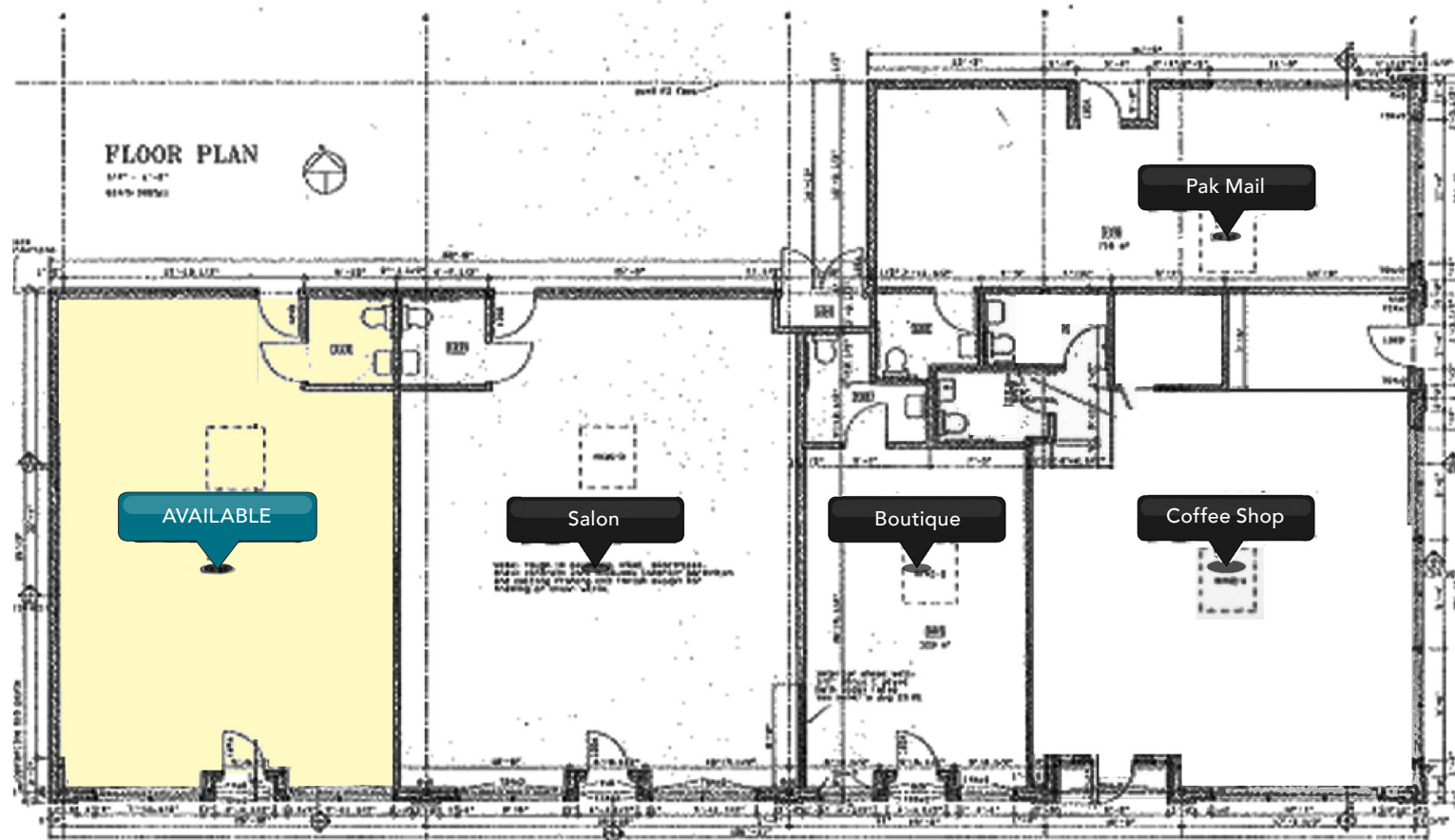
### 265 East 13th Street

- 1,009 square feet
- On-site parking
- Restroom
- \$1,650.00 per month + \$745.00 per month triple nets

# Floor Plan

## Triple Nets

- Building insurance
- Grounds and parking maintenance
- HVAC maintenance
- Garbage
- Management
- Common water and electric
- Property taxes





## 13th Ave. Retail Space for Lease

265 East 13th Avenue  
Eugene OR 97401

For more property and leasing  
information, please contact:

Jeff Elder  
jeff@eebcre.com

Ashley Hope Elder  
ashley@eebcre.com

(541) 345-4860

Evans  
Elder  
Brown &  
Seubert

COMMERCIAL REAL ESTATE

