

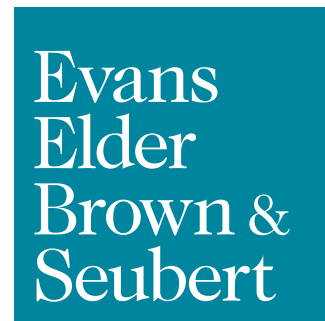


FOR LEASE

Country Club Professional Offices

895-A COUNTRY CLUB ROAD | SUITE A-200 | EUGENE OR 97401

- 2,074 rentable square feet
- Desirable Country Club Road location, easy access to I-105 and Delta Highway
- Located on the LTD bus line
- Beautiful campus with mature trees
- Plentiful on-site parking
- \$1.65 per square foot per month, full service including janitorial



COMMERCIAL REAL ESTATE

CONTACT

Jeff Elder
jeff@eebcre.com

Ashley Elder
ashley@eebcre.com

(541) 345-4860

Licensed in the State of Oregon.

Suite A-200 Floor Plan

895 Country Club Road
Eugene, Oregon 97401

Evans
Elder
Brown &
Seubert

COMMERCIAL REAL ESTATE

CONTACT

**Jeff
Elder**

jeff@eebcre.com

**Ashley
Hope
Elder**

ashley@eebcre.com

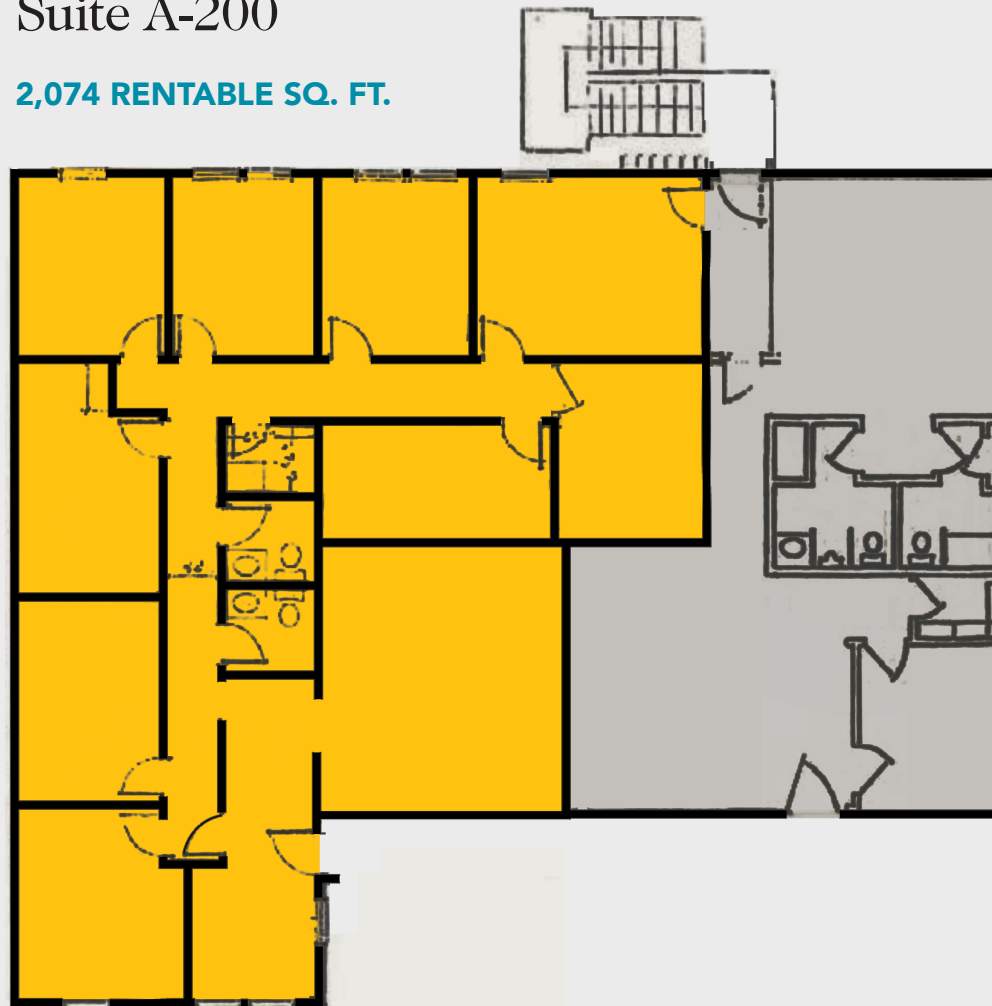
(541) 345-4860

101 East Broadway
Suite #101
Eugene, OR 97401

Licensed in the
State of Oregon.

Suite A-200

2,074 RENTABLE SQ. FT.



Location

895 Country Club Road
Eugene, Oregon 97401

Evans
Elder
Brown &
Seubert

COMMERCIAL REAL ESTATE

CONTACT

**Jeff
Elder**

jeff@eebcre.com

**Ashley
Hope
Elder**

ashley@eebcre.com

(541) 345-4860

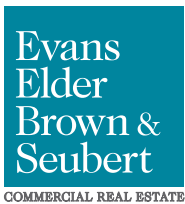
101 East Broadway
Suite #101
Eugene, OR 97401

Licensed in the
State of Oregon.



Professional Campus

895 Country Club Road
Eugene, Oregon 97401



CONTACT

Jeff Elder
jeff@eebcre.com

(541) 345-4860

Ashley Hope Elder
ashley@eebcre.com

(541) 345-4860