

**Evans  
Elder  
Brown &  
Seubert**

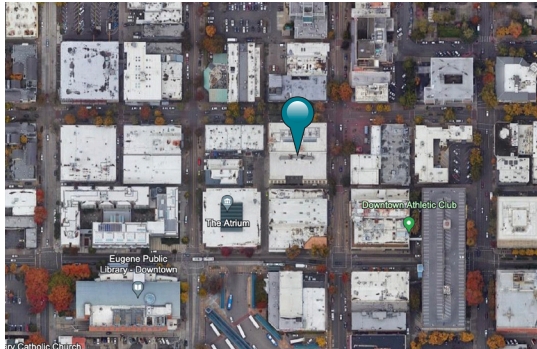
COMMERCIAL REAL ESTATE

101 E. Broadway  
Suite 101  
Eugene, OR 97401  
(541) 345-4860

[eebcre.com](http://eebcre.com)

## FOR LEASE

940 Willamette Street  
Eugene, Oregon 97401



### CONTACT

**Jeff Elder**

[jeff@eebcre.com](mailto:jeff@eebcre.com)

**Ashley Hope Elder**

[ashley@eebcre.com](mailto:ashley@eebcre.com)

(541) 345-4860

Licensed in the State of Oregon



## The Woolworth Building Ground Floor Retail Space

- 1,212 square feet
- Storefront on Willamette Street
- Fiber Optic Cable
- Lease includes employee membership to Downtown Athletic Club
- \$1.50 per square foot, triple net

# Overview



## Downtown Athletic Club Membership

Lease includes employee membership to the Downtown Athletic Club during the lease term

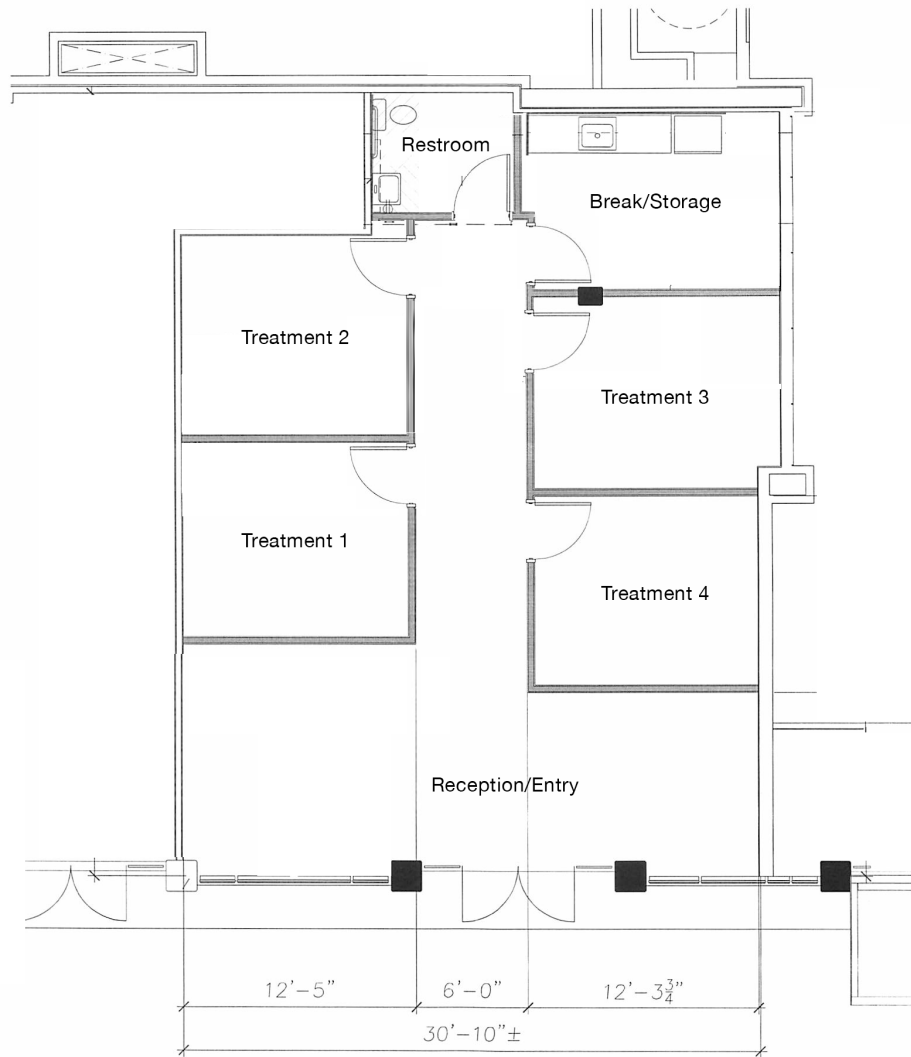
## Triple Nets

\$0.73 per square foot

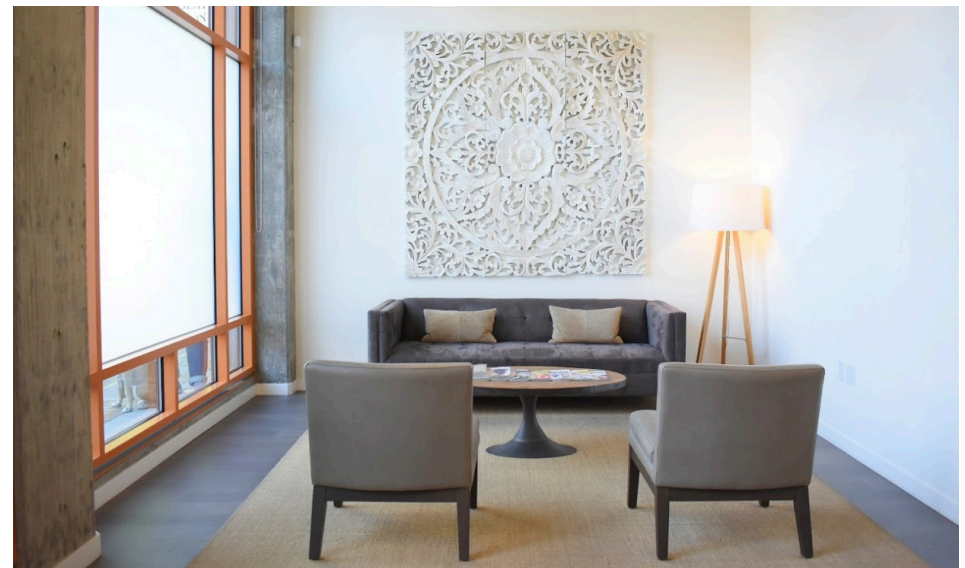
- Property Taxes
- Insurance
- Utilities



# Retail Floor Plan



Ground Floor Entry on Willamette Street



# The Woolworth Building

## Location Details

- Conveniently located in the central business district
- Has close proximity to city and county facilities, restaurants, and retail
- Within one block from efficient public transit
- Across the street from the Downtown Athletic Club

