

**Evans
Elder
Brown &
Seubert**

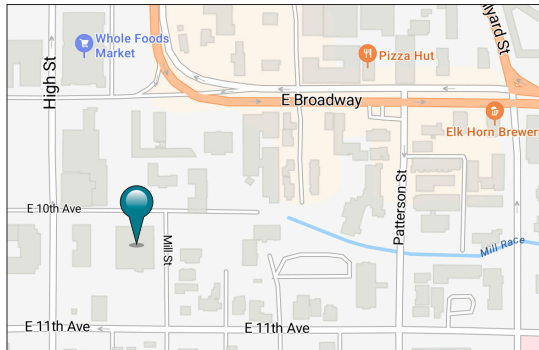
COMMERCIAL REAL ESTATE

101 E. Broadway
Suite 101
Eugene, OR 97401
(541) 345-4860

eebcre.com

FOR SUBLEASE

360 E 10th Avenue
Eugene OR 97402



CONTACT

Stephanie Seubert
stephanie@eebcre.com

(541) 345-4860

Licensed in the State of Oregon



High Quality Class A Office Space

360 East 10th Avenue | Suites 300 & 380

- Two Suites available totaling 6,675 rentable square feet broken down as follows:
- **Suite 380** - Approximately 3,185 rentable square feet.
- **Suite 300** - Approximately 3,490 rentable square feet.
- Space could be combined with adjacent unit adding approximately 2,333 additional square feet if needed
- Master lease runs through November 30th, 2026
- Conveniently located between Downtown Eugene and the University of Oregon
- \$2.13 per square foot per month, full service, less janitorial

Location



Location

Conveniently located between Downtown Eugene and the University of Oregon near Whole Foods and other Downtown amenities and includes on-site parking at market rates.

Interior



Floor Plan

Suite 380

Approximately 3,185 rentable sf

Consists of:

- Four (4) offices
- Kitchenette area
- Large conference room or work space

Suite 300

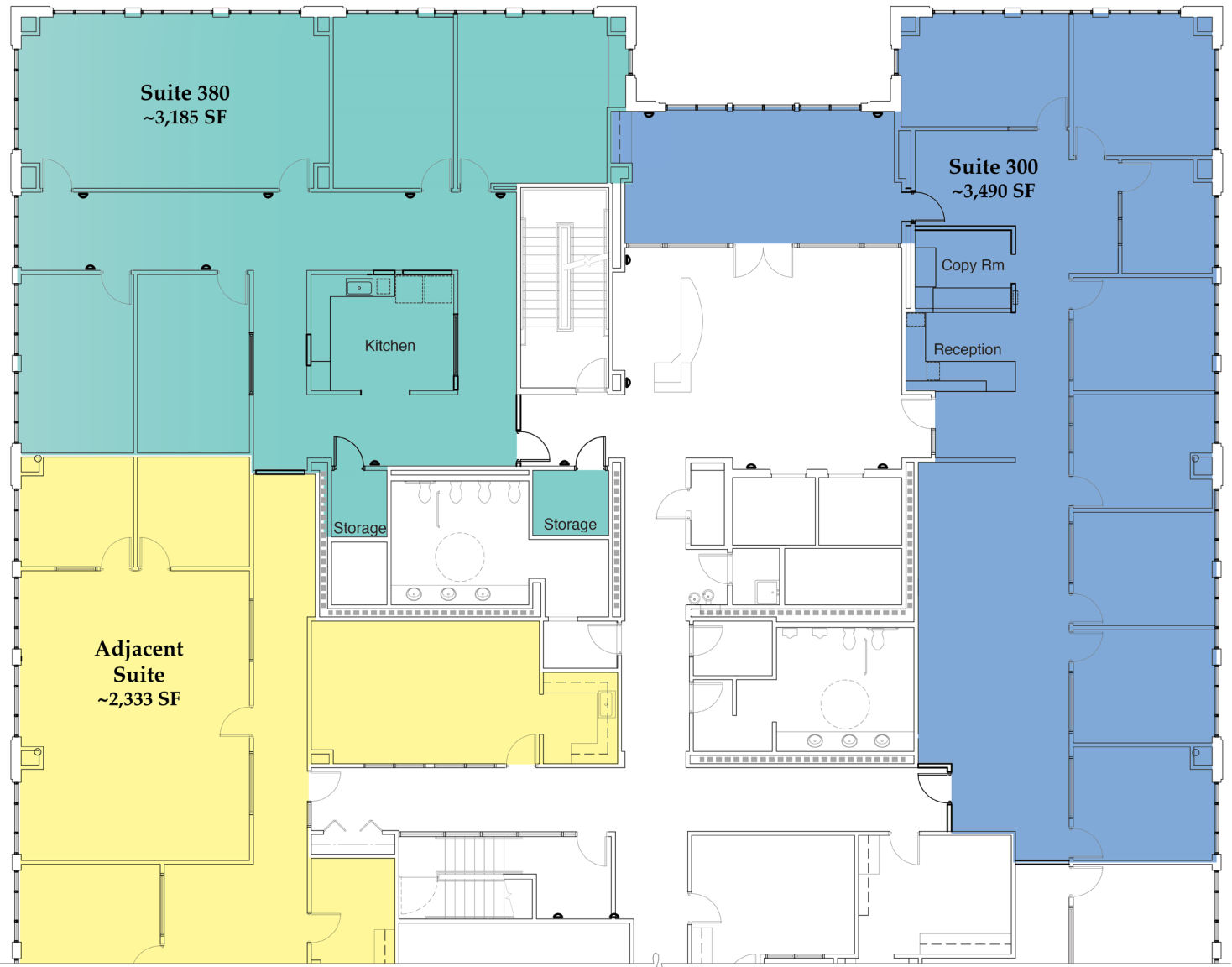
Approximately 3,490 rentable sf

Consists of:

- Eight (8) private offices
- Large executive conference room
- Open work area
- Reception area
- Copy Room

Adjacent Suite

Approximately 2,333 rentable sf



Class A Office Space for Sublease

360 E 10th Avenue
Eugene OR 97402

For more property information,
please contact:

Stephanie Seubert
stephanie@ebcre.com

(541) 345-4860

**Evans
Elder
Brown &
Seubert**

COMMERCIAL REAL ESTATE



The information in this package was gathered from sources deemed reliable, however Evans Elder Brown & Seubert makes no representation or warranty of the accuracy of the information. Any buyer or tenant considering a purchase or lease of this property should confirm any and all information relied upon in making the decision to purchase or lease prior to finalizing the transaction and bears the risk of all inaccuracies.