

**Evans
Elder
Brown &
Seubert**

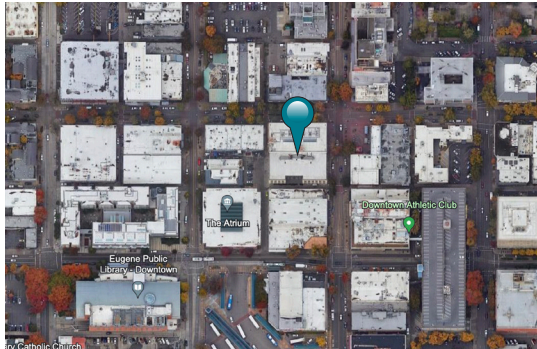
COMMERCIAL REAL ESTATE

101 E. Broadway
Suite 101
Eugene, OR 97401
(541) 345-4860

eebcre.com

FOR LEASE

940 Willamette Street
Eugene, Oregon 97401



CONTACT

Jeff Elder

jeff@eebcre.com

Ashley Hope Elder

ashley@eebcre.com

(541) 345-4860

Licensed in the State of Oregon



The Woolworth Building

Corner Storefront on Willamette Street

- 1,020 square feet
- Sinks and grease interceptor
- Lease includes employee membership to Downtown Athletic Club
- Can combine with adjacent 1,212 square feet
- \$1.50 per square foot, triple net

Overview



Details

- Large seating area
- Wash sinks
- Grease interceptor
- ADA restroom
- Tall ceilings

Triple Nets

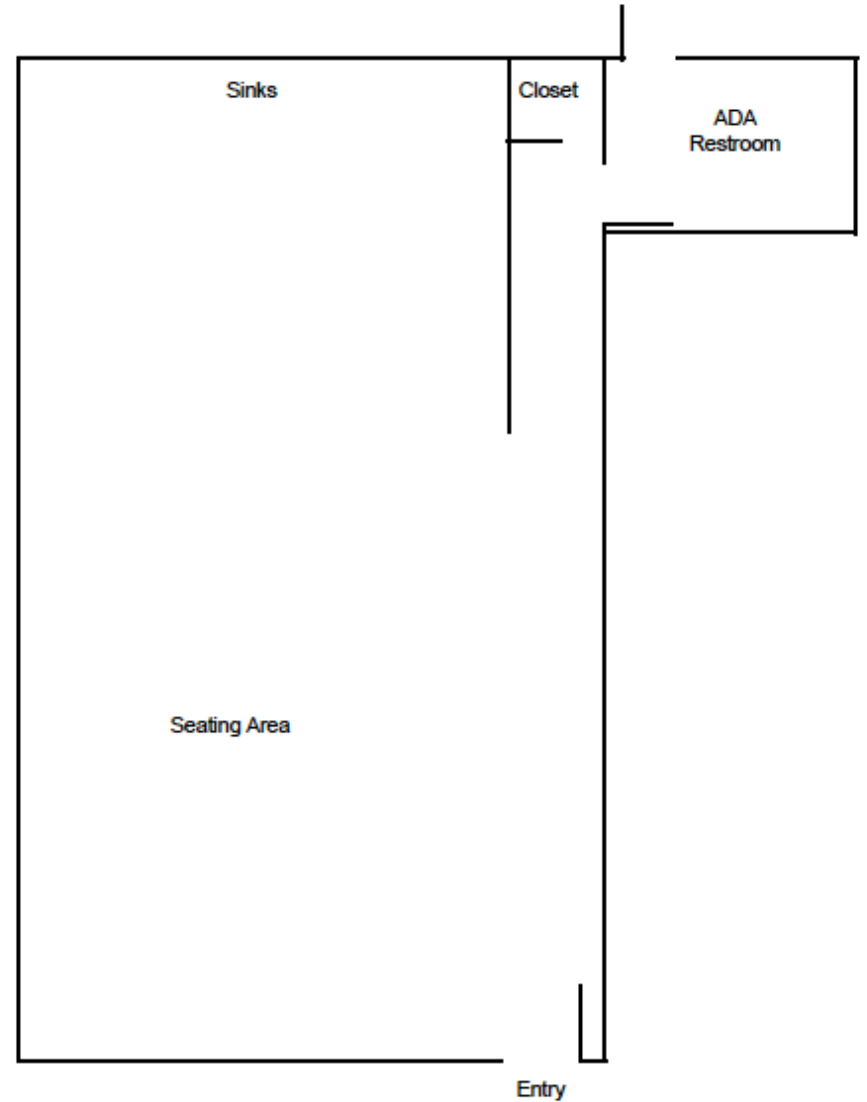
\$0.73 per square foot

- Property Taxes
- Insurance
- Utilities

Downtown Athletic Club Membership

Lease includes employee membership to the Downtown Athletic Club during the lease term

Retail Floor Plan



Ground Floor Entry on Willamette Street

The Woolworth Building

Location Details

- Conveniently located in the central business district
- Has close proximity to city and county facilities, restaurants, and retail
- Within one block from efficient public transit
- Across the street from the Downtown Athletic Club

