

**Evans
Elder
Brown &
Seubert**

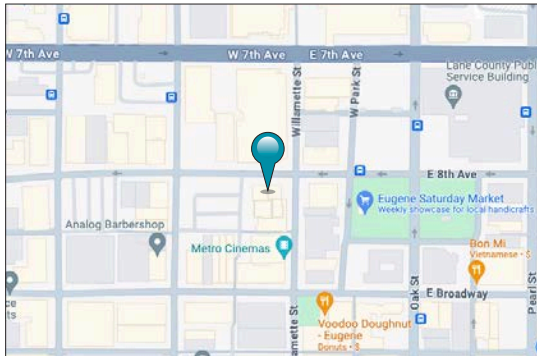
COMMERCIAL REAL ESTATE

101 E. Broadway
Suite 101
Eugene, OR 97401
(541) 345-4860

eebcre.com

FOR LEASE

800 Willamette Street, Suite 600
Eugene, Oregon



CONTACT

Stephanie Seubert
stephanie@eebcre.com
(541) 345-4860

Class A Office Space

DOWNTOWN EUGENE

- Approximately 888 square feet of quality office space
- Located on the corner of 8th Avenue & Willamette Streets with excellent visibility and access
- High Speed Fiber Connectivity available
- Corner unit with large windows which provide views to the South and West
- Can be combined with adjacent space
- \$1,776.00 per month, fully serviced

Licensed in the State of Oregon

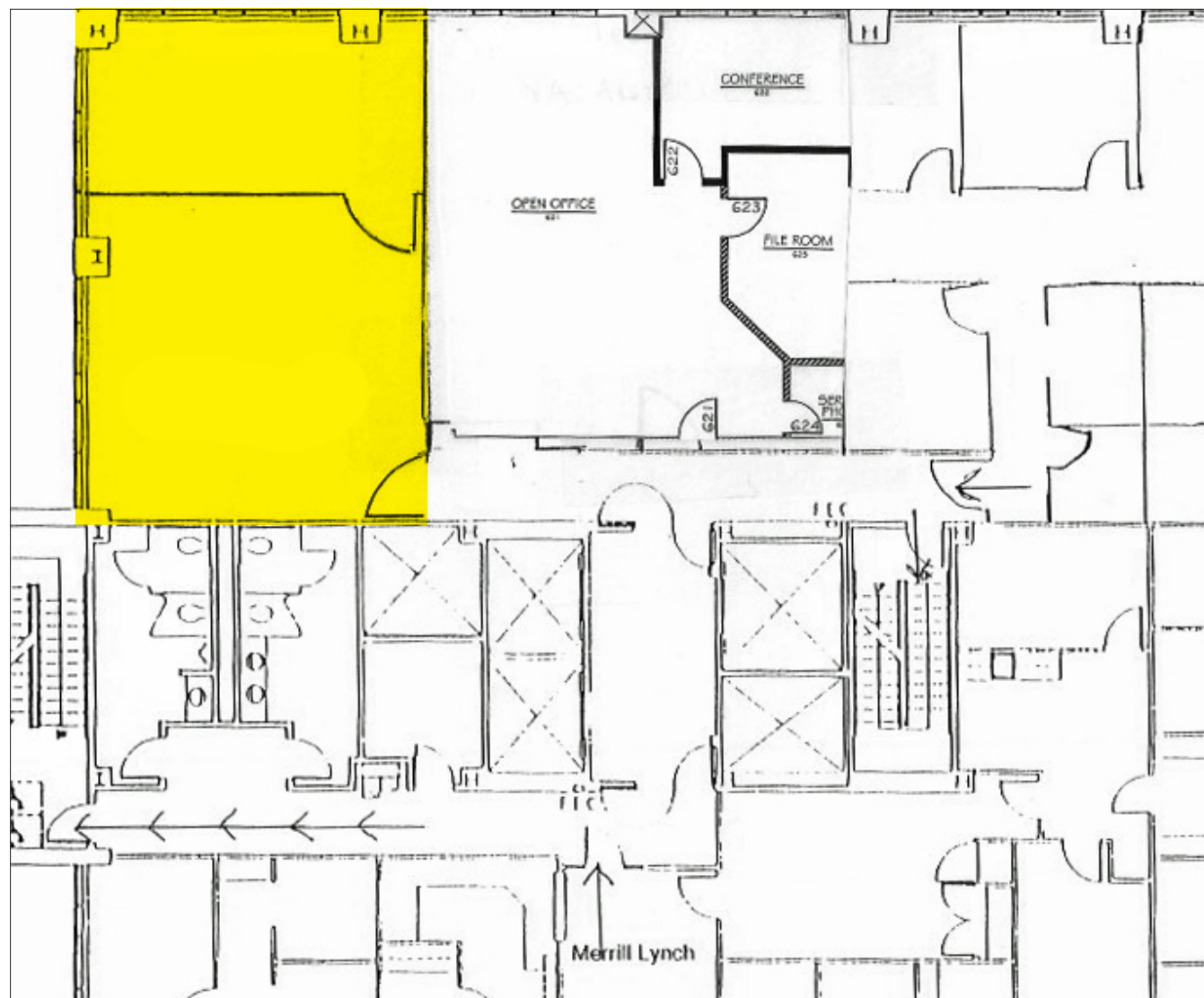


The information in this package was gathered from sources deemed reliable, however Evans Elder Brown & Seubert makes no representation or warranty of the accuracy of the information. Any buyer or tenant considering a purchase or lease of this property should confirm any and all information relied upon in making the decision to purchase or lease prior to finalizing the transaction and bears the risk of all inaccuracies.

Floor Plan

SUITE 600

- Approximately 888 rentable square feet of 6th floor office space
- Open reception area with one large private corner office
- Access to common area restrooms
- Could be combined with Suite 620 for more space if needed
- \$1,776.00 per month, fully serviced



**Plan is not to Scale.*