

**Evans
Elder
Brown &
Seubert**

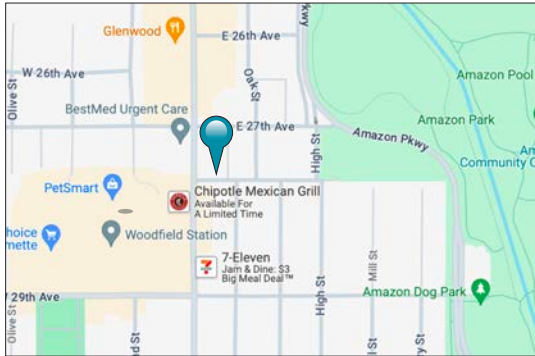
COMMERCIAL REAL ESTATE

101 E. Broadway
Suite 101
Eugene, OR 97401
(541) 345-4860

eebcre.com

FOR LEASE

2727 Willamette Street, Suite B
Eugene, Oregon



CONTACT

Stephanie Seubert
stephanie@eebcre.com

Jackson Seubert
jackson@eebcre.com
(541) 345-4860

Licensed in the State of Oregon



South Eugene Office Space

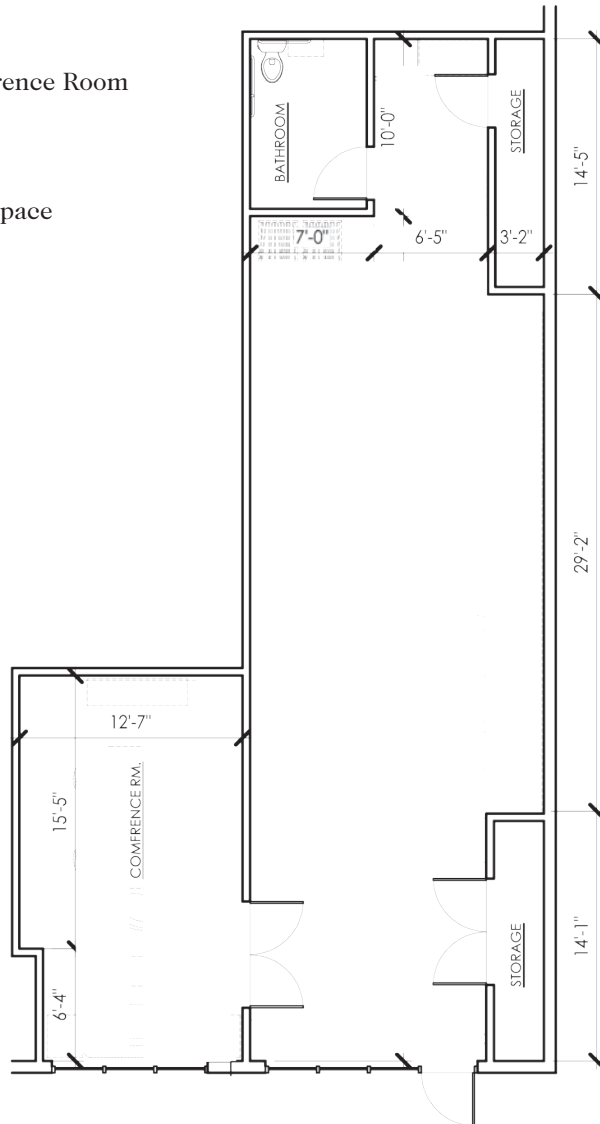
- Approximately 1,100 square feet
- Space includes open area with large private conference room and private restroom
- Large windows provide abundant natural light
- Includes one (1) onsite parking space
- \$1.45 per square foot, per month, modified gross (tenant is responsible for utilities, refuse service, janitorial, and quarterly HVAC maintenance)

The information in this package was gathered from sources deemed reliable, however Evans Elder Brown & Seubert makes no representation or warranty of the accuracy of the information. Any buyer or tenant considering a purchase or lease of this property should confirm any and all information relied upon in making the decision to purchase or lease prior to finalizing the transaction and bears the risk of all inaccuracies.

Floorplan

DETAILS

- Large private conference Room
- Open work area
- ADA Restroom
- Abundant Storage Space



Location

