



FOR LEASE

Crescent Village Retail

**Evans
Elder
Brown &
Seubert**

COMMERCIAL REAL ESTATE

CONTACT

Stephanie Seubert
stephanie@eebcre.com

Alan Evans
alan@eebcre.com

(541) 345-4860

Licensed in the State of Oregon.

PROPERTY DETAILS

- Approximately 1,250 square feet
- Highly-visible, corner location at entrance to Crescent Village
- Move in ready condition with high-quality finishes
- \$27.00 per square foot, NNN

Crescent Village
2734 Shadow View Drive
Eugene, OR 97408

Floor Plan

2734 Shadow View Dr.
Eugene, OR 97408

Evans
Elder
Brown &
Seubert

COMMERCIAL REAL ESTATE

CONTACT

**Stephanie
Seubert**

stephanie@eebcre.com

**Alan
Evans**

alan@eebcre.com

**Jackson
Seubert**

jackson@eebcre.com

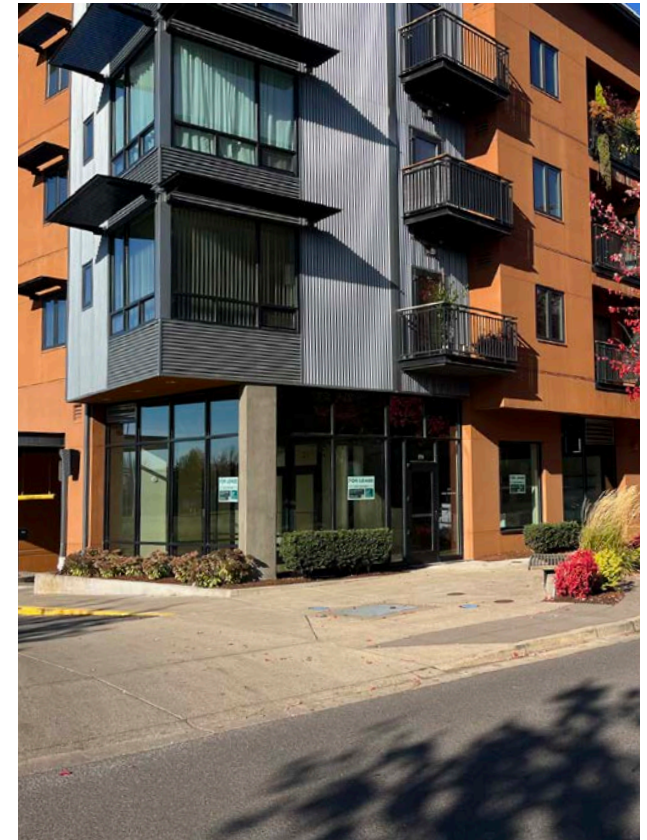
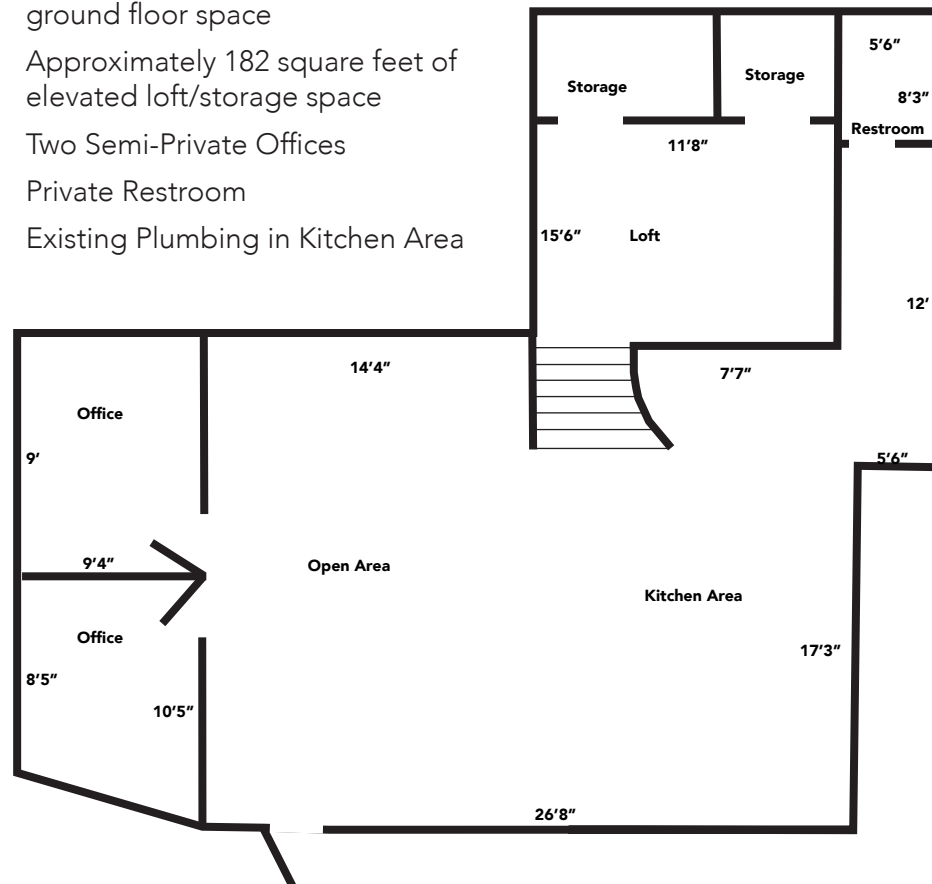
(541) 345-4860

101 East Broadway
Suite #101
Eugene, OR 97401

Licensed in the
State of Oregon.

Details

- Approximately 1,067 square feet of ground floor space
- Approximately 182 square feet of elevated loft/storage space
- Two Semi-Private Offices
- Private Restroom
- Existing Plumbing in Kitchen Area



Photographs

2734 Shadow View Dr.
Eugene, OR 97408

Evans
Elder
Brown &
Seubert

COMMERCIAL REAL ESTATE

CONTACT

**Stephanie
Seubert**

stephanie@eebcre.com

**Alan
Evans**

alan@eebcre.com

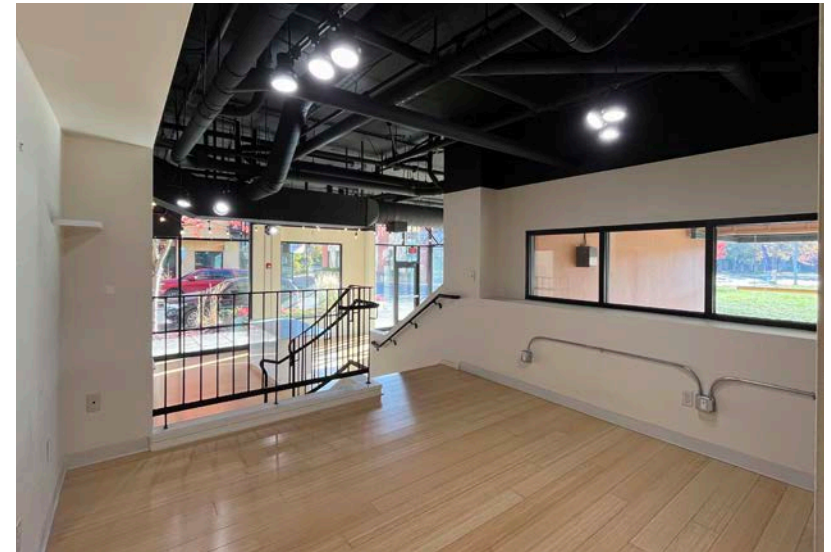
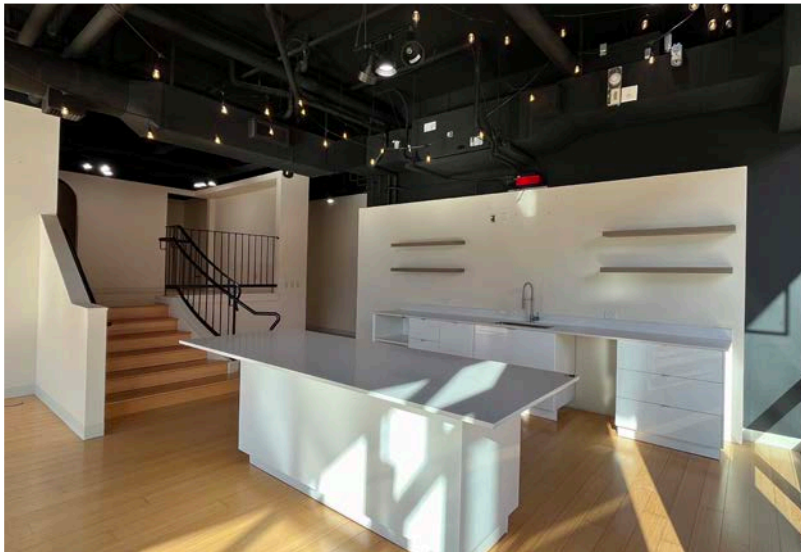
**Jackson
Seubert**

jackson@eebcre.com

(541) 345-4860

101 East Broadway
Suite #101
Eugene, OR 97401

Licensed in the
State of Oregon.



Site Plan

2734 Shadow View Dr.
Eugene, OR 97408

Evans
Elder
Brown &
Seubert

COMMERCIAL REAL ESTATE

CONTACT

**Stephanie
Seubert**

stephanie@eebcre.com

**Alan
Evans**

alan@eebcre.com

**Jackson
Seubert**

jackson@eebcre.com

(541) 345-4860

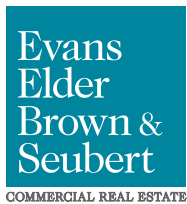
101 East Broadway
Suite #101
Eugene, OR 97401

Licensed in the
State of Oregon.



Location

2734 Shadow View Dr.
Eugene, OR 97408



CONTACT

Stephanie Seubert
stephanie@eebcre.com

(541) 345-4860

Alan Evans
alan@eebcre.com

(541) 345-4860

Jackson Seubert
jackson@eebcre.com

(541) 345-4860