



FOR LEASE

Gateway Area Office Space

1090 Gateway Loop
Springfield OR 97477

SECOND FLOOR OFFICE SPACE

- Approximately 3,678 square feet
- Elevatored, ADA Accessible Building
- Excellent on-site parking
- \$1.47 per square foot per Month, plus CAMs (CAMs are approx. \$0.67/SF/Mo.)

**Evans
Elder
Brown &
Seubert**

COMMERCIAL REAL ESTATE

CONTACT

Stephanie Seubert

stephanie@eebcre.com

Jackson Seubert

jackson@eebcre.com

(541) 345-4860

Licensed in the State of Oregon.

Second Floor Plan

1090 Gateway Lp. Springfield OR 97477

**Evans
Elder
Brown &
Seubert**

COMMERCIAL REAL ESTATE

CONTACT

**Stephanie
Seubert**

stephanie@eebcre.com

**Jackson
Seubert**

jackson@eebcre.com

(541) 345-4860

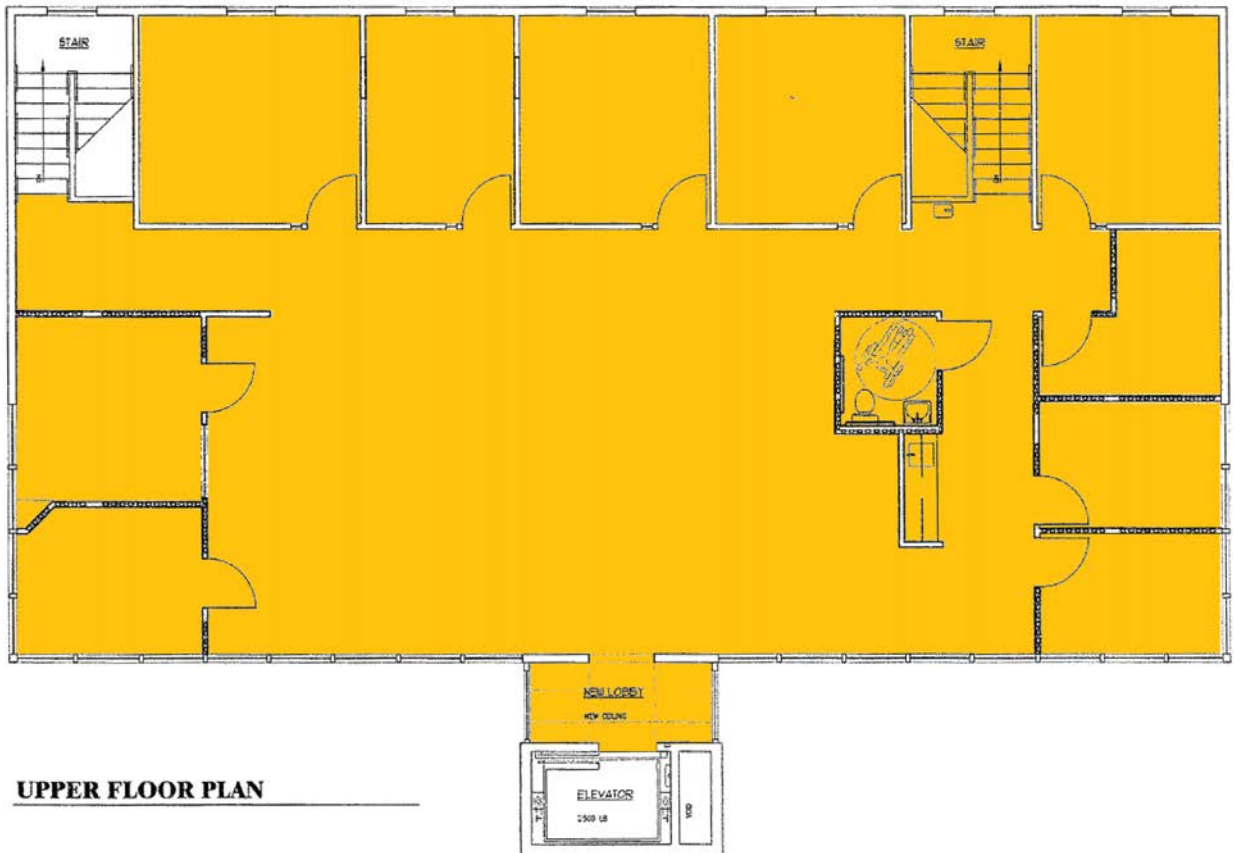
101 East Broadway
Suite #101
Eugene, OR 97401

Licensed in the
State of Oregon.

Office Suite

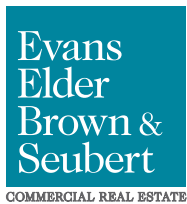
3,678 SQUARE FEET

- Elevator access to Second Floor
- Nine (9) private offices
- Open work area
- Server/storage room
- Kitchenette area
- One (1) private ADA restroom with access to common area restrooms on the ground floor
- Abundant natural light
- Updated finishes
- Shared on-site parking
- \$1.47 per square foot, per month plus CAMs of approximately 67¢ per square foot, per month



Location

1090 Gateway Lp. Springfield OR 97477



CONTACT

(541) 345-4860

Stephanie Seubert
stephanie@eebcre.com

Jackson Seubert
jackson@eebcre.com