

**Evans
Elder
Brown &
Seubert**

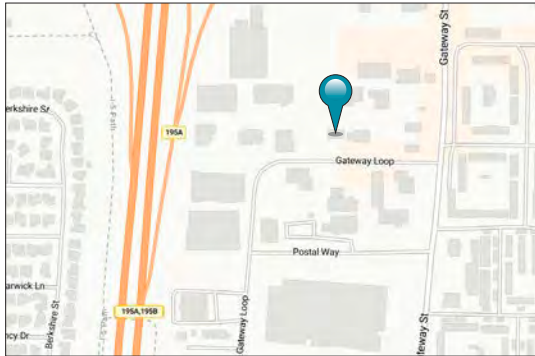
COMMERCIAL REAL ESTATE

101 E. Broadway
Suite 101
Eugene, OR 97401
(541) 345-4860

eebcre.com

FOR LEASE

1090 Gateway Loop
Springfield, Oregon



CONTACT

Stephanie Seubert
stephanie@eebcre.com

Jackson Seubert
jackson@eebcre.com

(541) 345-4860

Gateway Area Office Space

1090 GATEWAY LOOP | 2ND FLOOR

- Approximately 3,678 square feet
- Elevator, ADA Accessible Building
- Excellent On-site parking

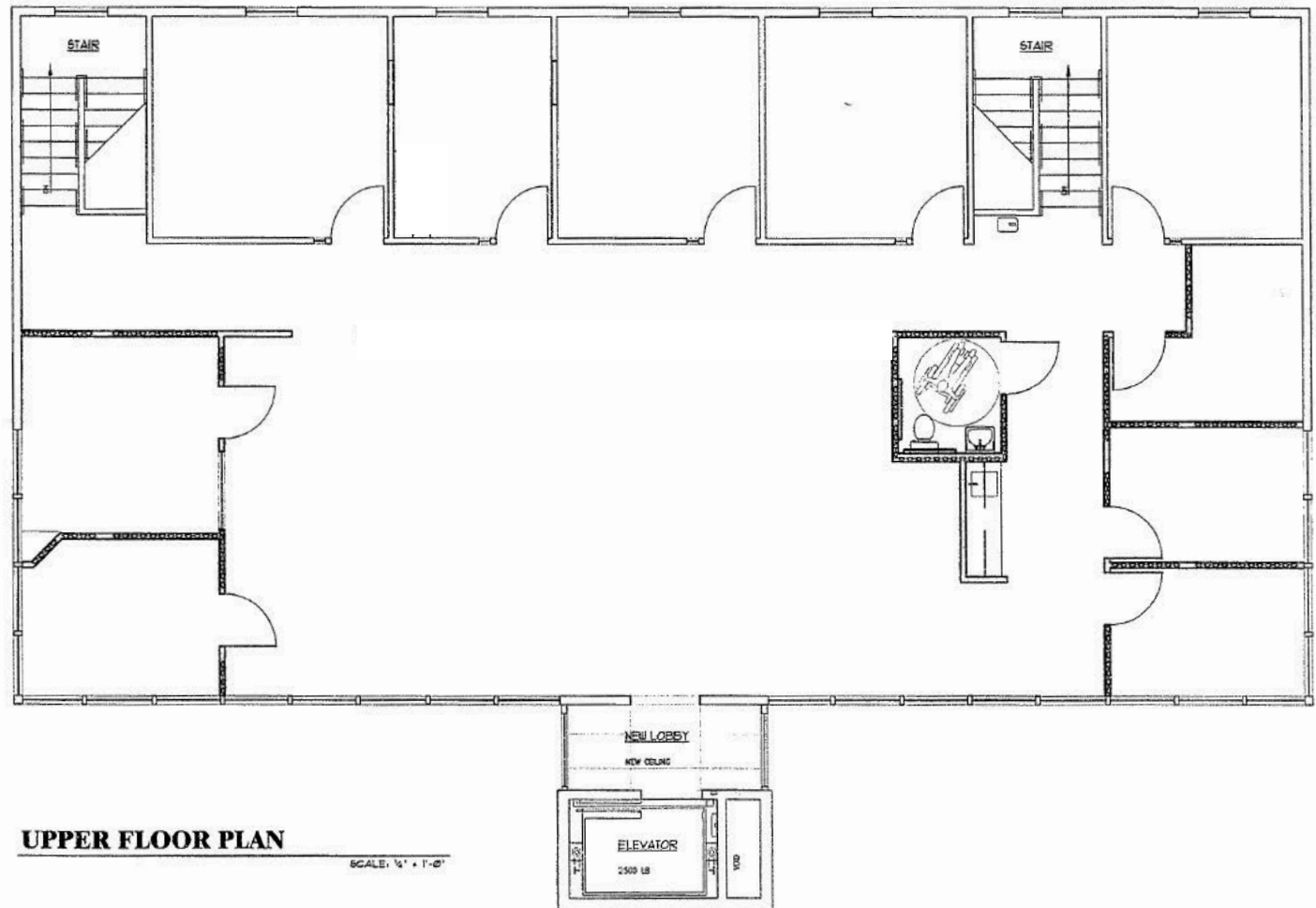
Licensed in the State of Oregon



The information in this package was gathered from sources deemed reliable, however Evans Elder Brown & Seubert makes no representation or warranty of the accuracy of the information. Any buyer or tenant considering a purchase or lease of this property should confirm any and all information relied upon in making the decision to purchase or lease prior to finalizing the transaction and bears the risk of all inaccuracies.

Second Floor Plan

- Approximately 3,678 square feet
- ADA accessible with elevator access
- Nine (9) private offices
- Open work area
- Server room
- Kitchenette area
- One (1) private ADA restroom with access to common area restrooms on the ground floor
- Abundant natural light
- Updated finishes
- \$1.47 per square foot, per month plus CAMs of approximately 67¢ per square foot, per month (tenant pays for their own janitorial)



Location

