

**Evans  
Elder  
Brown &  
Seubert**

COMMERCIAL REAL ESTATE

101 E. Broadway  
Suite 101  
Eugene, OR 97401  
(541) 345-4860

[eebcre.com](http://eebcre.com)

## FOR LEASE

1940 Don Street  
Springfield OR 97477



### CONTACT

Jeff Elder  
[jeff@eebcre.com](mailto:jeff@eebcre.com)

Ashley Hope Elder  
[ashley@eebcre.com](mailto:ashley@eebcre.com)  
(541) 345-4860

Licensed in the State of Oregon



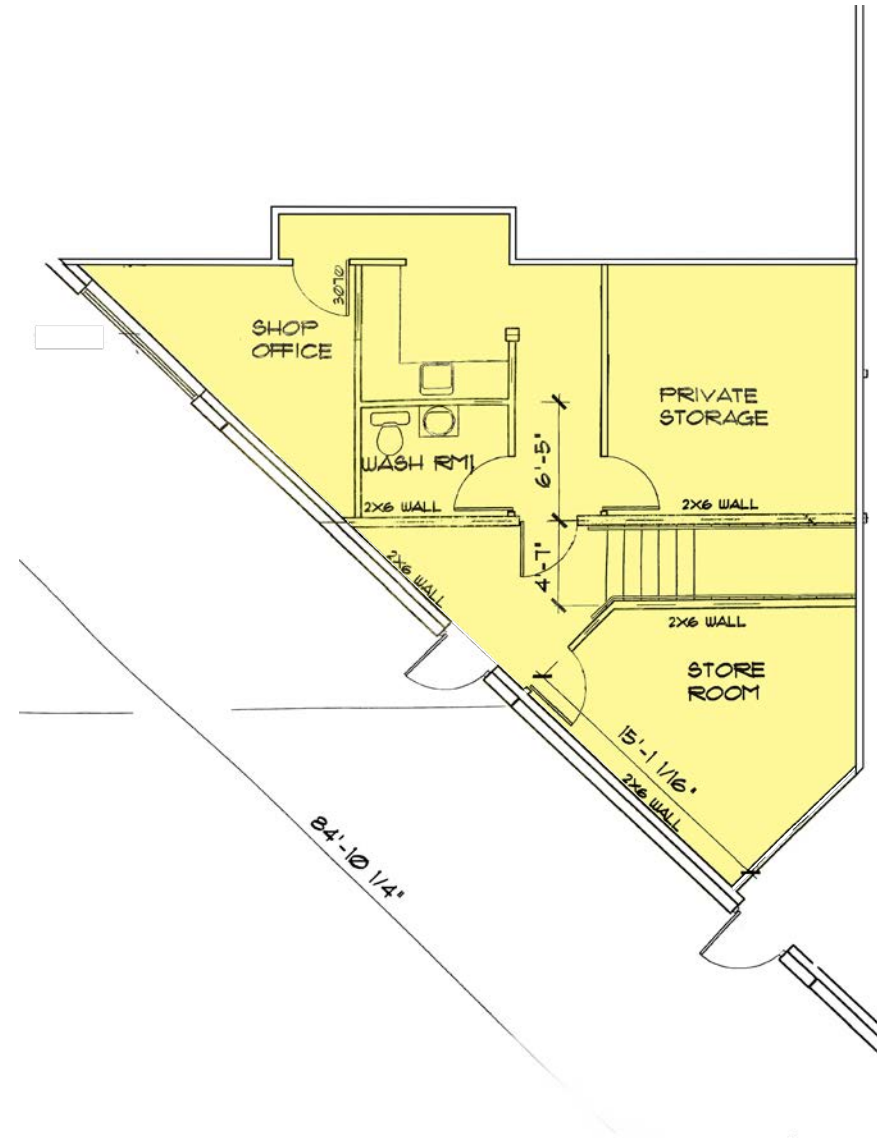
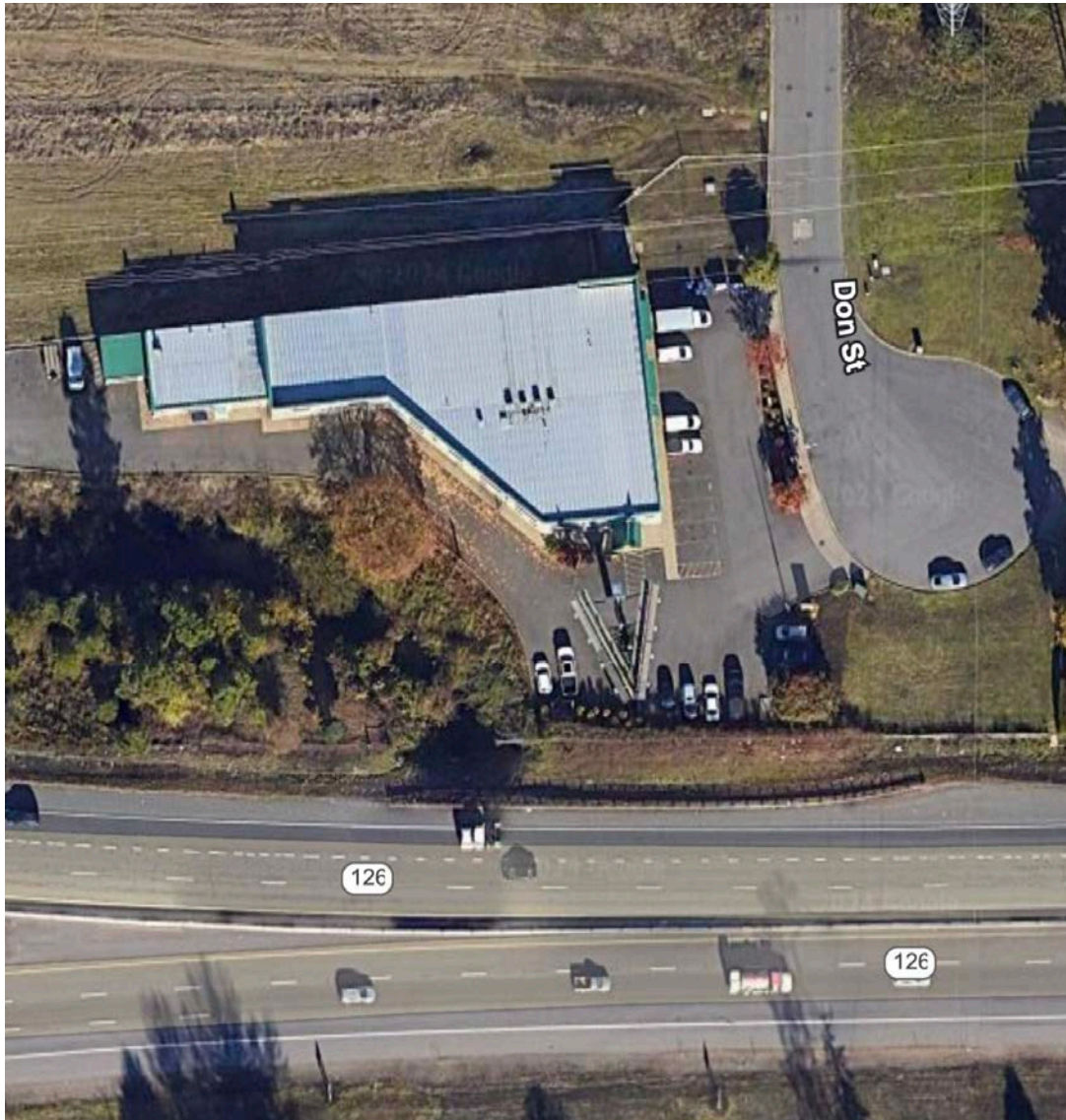
## Warehouse with Office

### Convenient I-105 Access

- 2,500 rentable square feet | 1,700 square feet warehouse
- Three (3) 12' x 14' loading doors
- Office area with three (3) private offices, coffee bar area and restroom
- Parking area
- Light Medium Industrial (LMI) zoning
- \$2,800 per month. modified gross

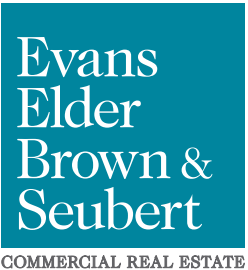
The information in this package was gathered from sources deemed reliable, however Evans Elder Brown & Seubert makes no representation or warranty of the accuracy of the information. Any buyer or tenant considering a purchase or lease of this property should confirm any and all information relied upon in making the decision to purchase or lease prior to finalizing the transaction and bears the risk of all inaccuracies.

# Site & Office Floor Plan



# Warehouse with Office for Lease

1940 Don Street | Springfield, Oregon 97477



For more property information, please contact:

**Jeff Elder**  
jeff@eebere.com  
(541) 345-4860

**Ashley Hope Elder**  
ashley@eebere.com  
(541) 345-4860