



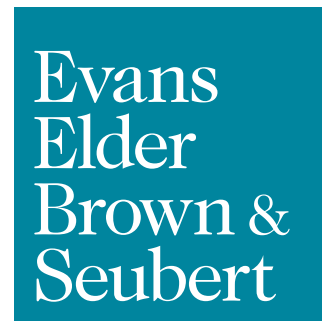
FOR LEASE | RATE REDUCED

Warehouse with Office

1940 Don Street
Springfield OR 97477

CONVENIENT I-105 ACCESS

- 2,500 rentable square feet | 1,700 square feet warehouse
- Three (3) 12' x 14' loading doors
- Office area with three (3) private offices, coffee bar area and restroom
- Parking area
- Light Medium Industrial (LMI) zoning
- \$2,150 per month. modified gross



COMMERCIAL REAL ESTATE

CONTACT

Jeff Elder

jeff@eebcre.com

Ashley Hope Elder

ashley@eebcre.com

(541) 345-4860

Licensed in the State of Oregon.

Site & Office Floor Plan

1940 Don Street
Springfield OR 97477

Evans
Elder
Brown &
Seubert

COMMERCIAL REAL ESTATE

CONTACT

**Jeff
Elder**

jeff@eebcre.com

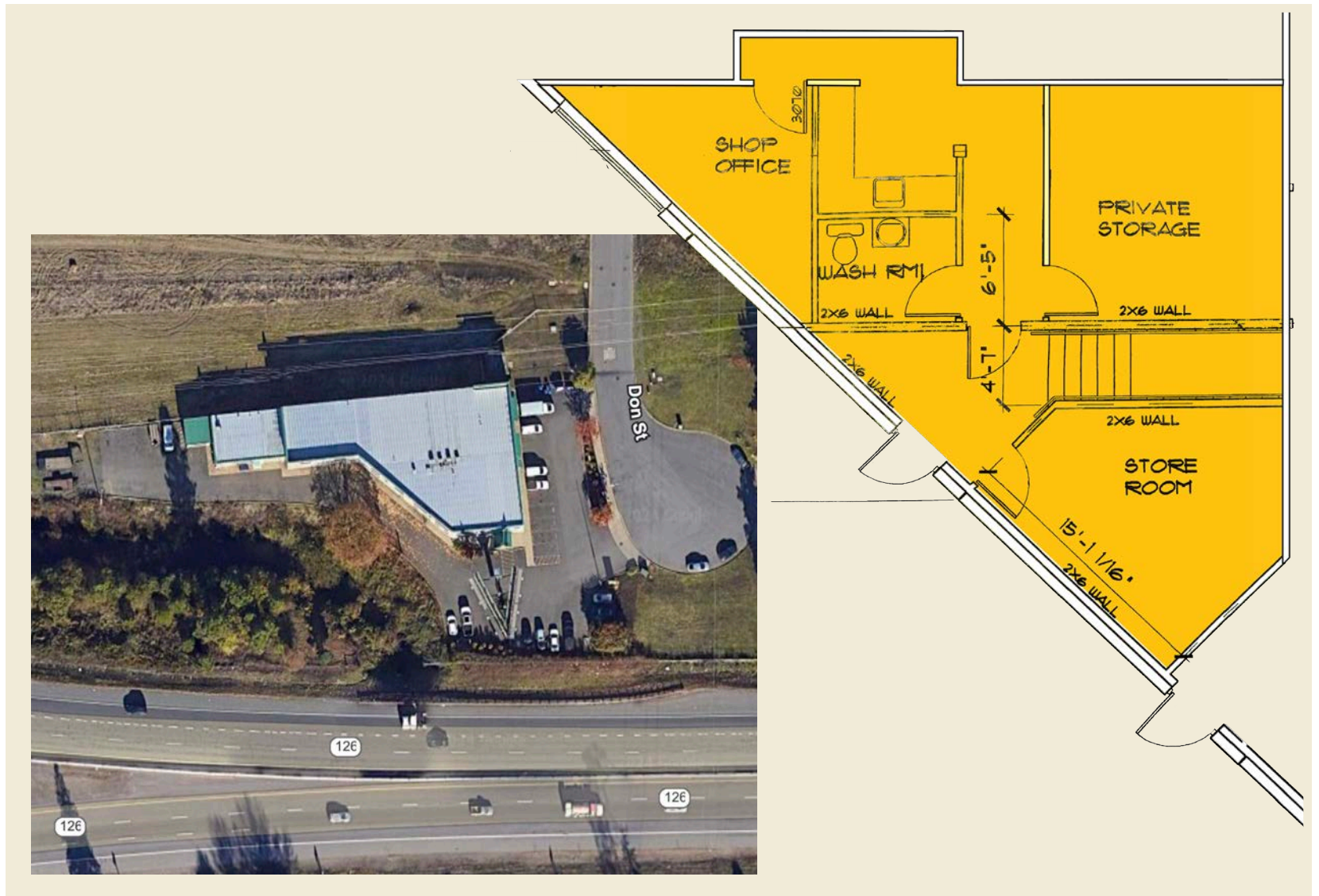
**Ashley
Hope
Elder**

ashley@eebcre.com

(541) 345-4860

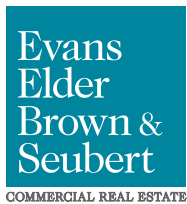
101 East Broadway
Suite #101
Eugene, OR 97401

Licensed in the
State of Oregon.



Location

1940 Don Street
Springfield OR 97477



CONTACT

Jeff Elder
jeff@eebcre.com

(541) 345-4860

Ashley Hope Elder
ashley@eebcre.com

(541) 345-4860