



FOR SUBLEASE

Warehouse with Office

521 Market Street
Eugene OR 97402

DETAILS

- 3,330 square feet
- Office (two story)
- Two 12 x 14 loading doors
- Two restrooms
- Zoned light industrial (I-2)
- \$3,663 per month, triple net

**Evans
Elder
Brown &
Seubert**

COMMERCIAL REAL ESTATE

CONTACT

Jeff Elder
jeff@eebcre.com

Ashley Hope Elder
ashley@eebcre.com

(541) 345-4860

Licensed in the State of Oregon.

Photographs

521 Market Street, Eugene Oregon 97402

Evans
Elder
Brown &
Seubert

COMMERCIAL REAL ESTATE

CONTACT

**Jeff
Elder**

jeff@eebcre.com

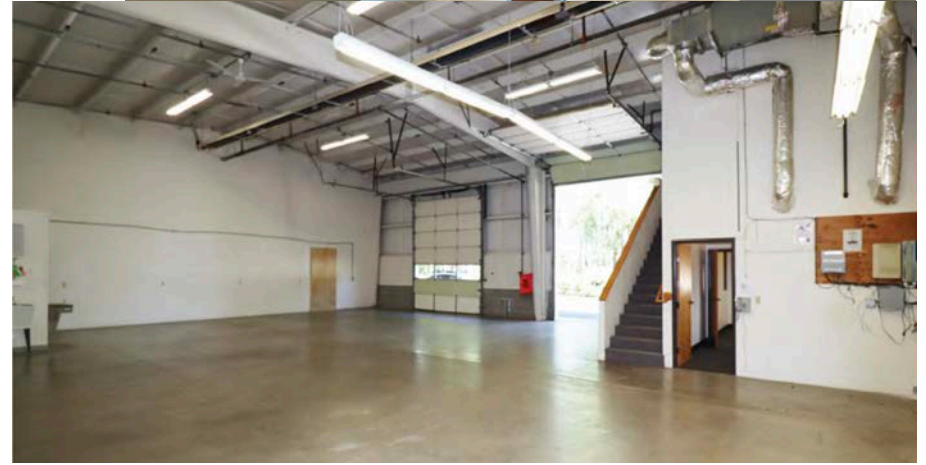
**Ashley Hope
Elder**

ashley@eebcre.com

(541) 345-4860

101 East Broadway
Suite #101
Eugene, OR 97401

Licensed in the
State of Oregon.



Description

521 Market Street, Eugene Oregon 97402

Evans
Elder
Brown &
Seubert

COMMERCIAL REAL ESTATE

CONTACT

**Jeff
Elder**

jeff@eebcre.com

**Ashley Hope
Elder**

ashley@eebcre.com

(541) 345-4860

101 East Broadway
Suite #101
Eugene, OR 97401

Licensed in the
State of Oregon.

AMENITIES

- Fire sprinkling
- Solar panels (offset electric cost)
- Air lines and shared use of compressor
- Washer/dryer hook-up

SUBLEASE

Sublease to April 30, 2026

TRIPLE NETS

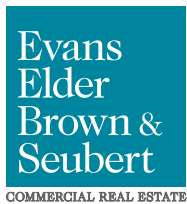
Currently \$333 per month

- Property taxes
- Building insurance



Location

521 Market Street, Eugene Oregon 97402



CONTACT

Jeff Elder
jeff@eebcre.com

(541) 345-4860

Ashley Hope Elder
ashley@eebcre.com

(541) 345-4860