



FOR LEASE

Dealership/Retail Property

1810 West 7th Avenue
Eugene OR 97402

CORNER OF 7TH & GRANT STREET

- 2 Buildings Available:
 - 8,733 square feet of office/service/parts area
 - 2,856 square feet of office/shop area
- 1.13 acre site
- 20,000 vehicles per day on West 7th Avenue
- Community Commercial (C-2) zoning
- \$17,500.00 per month, triple net

**Evans
Elder
Brown &
Seubert**

COMMERCIAL REAL ESTATE

CONTACT

Jeff Elder
jeff@eebcre.com

(541) 345-4860

Licensed in the State of Oregon.

Property Details

1810 West 7th Avenue
Eugene OR 97402

Evans
Elder
Brown &
Seubert

COMMERCIAL REAL ESTATE

CONTACT

Jeff
Elder

jeff@eebcre.com

(541) 345-4860

101 East Broadway
Suite #101
Eugene, OR 97401

Licensed in the
State of Oregon.

Buildings

SALES/SERVICE BUILDING:

- 8,733 square feet
- showroom
- offices
- service and parts areas
- lunchroom

SHOP BUILDING:

- 2,856 square feet
- office
- shop area

Site

1.13 Acres (49,222 square feet)

Zoning: C-2 (Community Commercial)



Property Highlights

1810 West 7th Avenue
Eugene OR 97402

Evans
Elder
Brown &
Seubert

COMMERCIAL REAL ESTATE

CONTACT

Jeff
Elder

jeff@eebcre.com

(541) 345-4860

101 East Broadway
Suite #101
Eugene, OR 97401

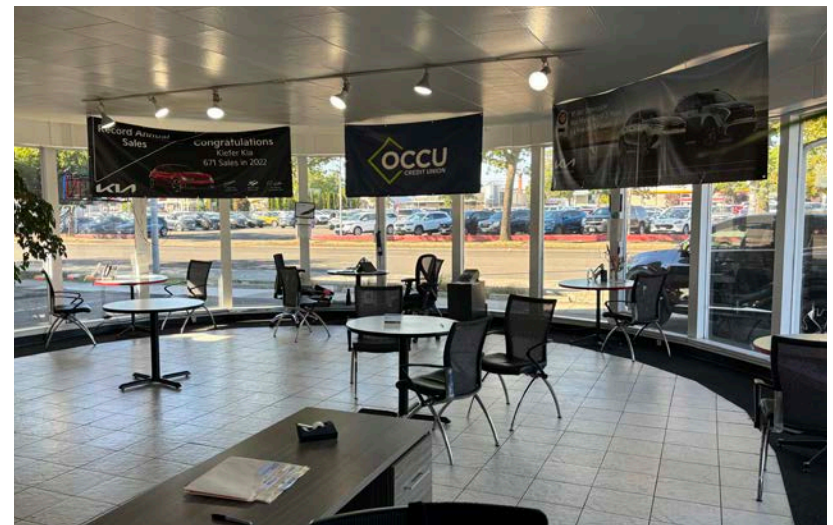
Licensed in the
State of Oregon.

Showroom/Sales

- 2,811 square feet of showroom and offices
- Storefront on West 7th Avenue

Service Area

- 4,811 square feet
- Space for eight (8) above-ground lifts
- Heated
- Eight (8) 10'x10' roll-up doors
- Compressed air hoses
- Lube hoses



Description & Floorplan

1810 West 7th Avenue
Eugene OR 97402

**Evans
Elder
Brown &
Seubert**

COMMERCIAL REAL ESTATE

CONTACT

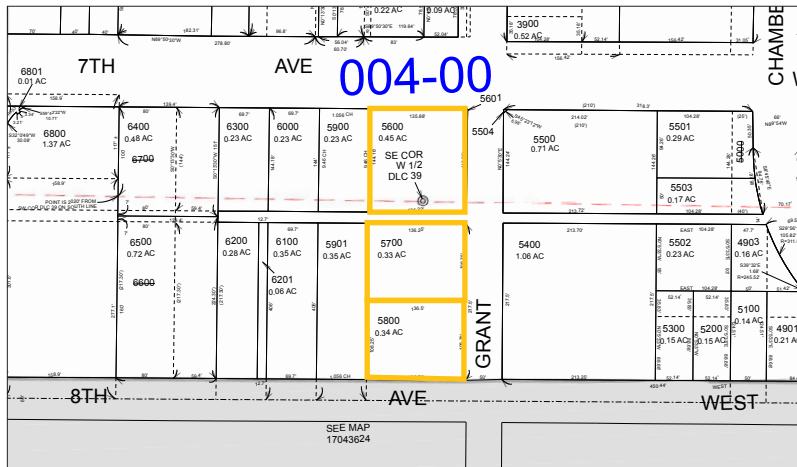
**Jeff
Elder**

jeff@eebcre.com

(541) 345-4860

101 East Broadway
Suite #101
Eugene, OR 97401

Licensed in the
State of Oregon.



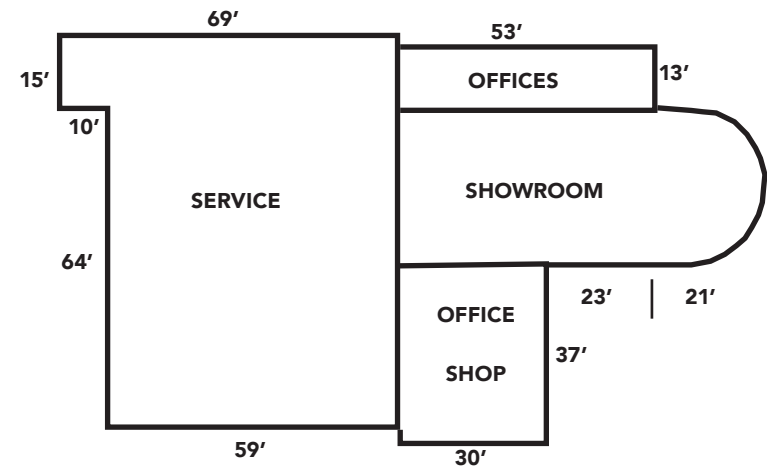
Details

Map and Tax Lot #: 17-04-36-21-05600, 5700, 5800

Lot Size: 1.13 Acres (49,222 square feet)

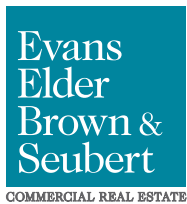
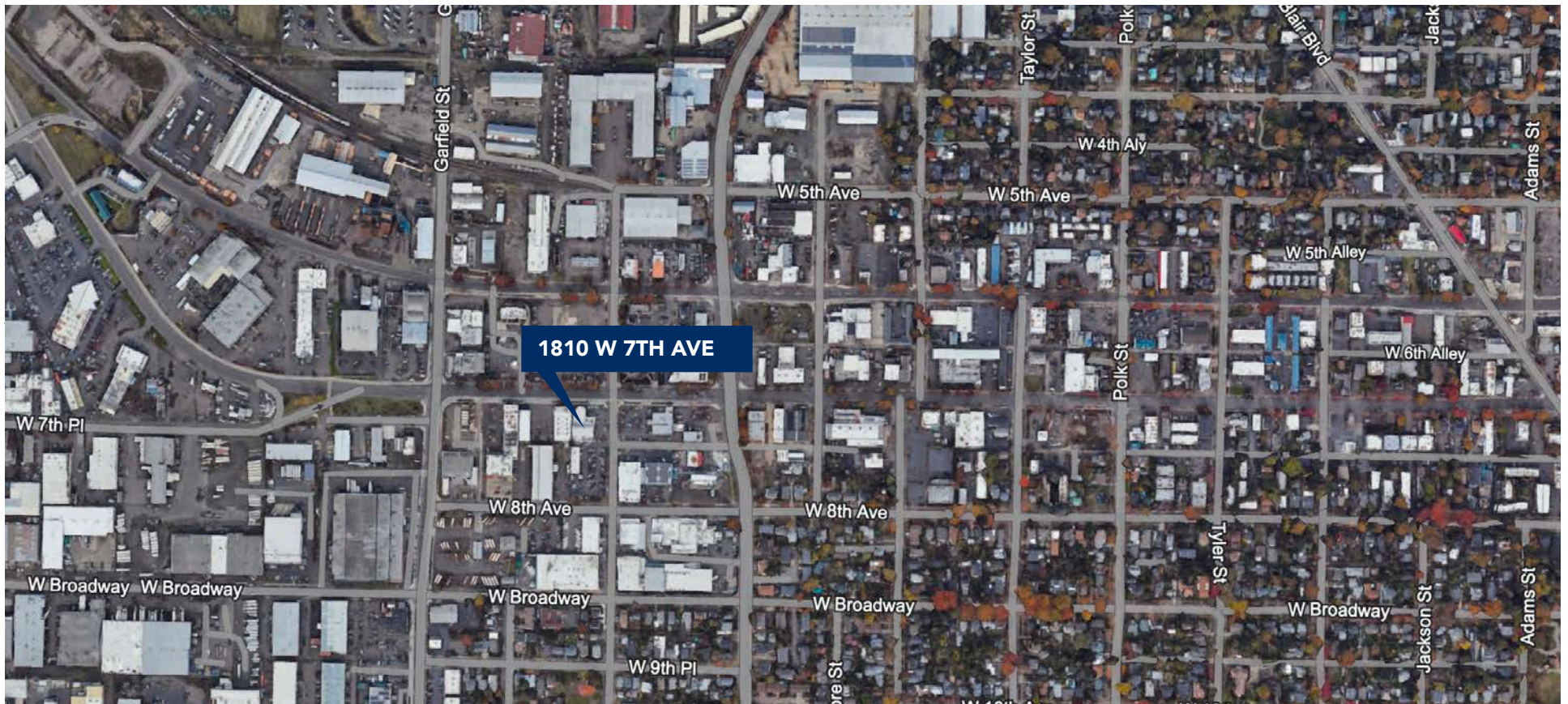
Zoning: C-2 (Community Commercial)

2024-25 Real Property Taxes: \$16,133.00



Location

1810 West 7th Avenue
Eugene OR 97402



CONTACT

Jeff Elder
jeff@eebcre.com

(541) 345-4860