



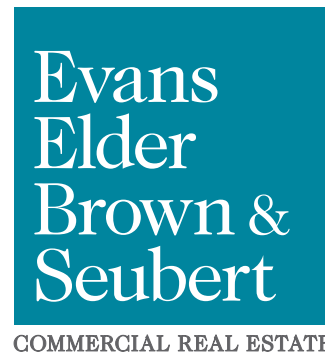
**FOR LEASE**

# High Quality Office Space

1955 Empire Park Drive  
Eugene, Oregon 97402

## DETAILS

- Approximately 833 square feet
- High traffic location with great visibility and signage on Hwy 99
- Space includes open work area, large conference room, one private office, kitchenette and ADA restroom
- Recently updated floors
- Ample on-site parking
- \$1.60/SF/Month, NNN (NNN's approximately \$0.42/SF/Month)



## CONTACT

**Stephanie Seubert**

stephanie@eebcre.com

**Lilly Storment**

lilly@eebcre.com

**Jackson Seubert**

jackson@eebcre.com

**(541) 345-4860**

Licensed in the State of Oregon.

# Interior Photos

1955 Empire Park Drive  
Eugene, Oregon 97402

Evans  
Elder  
Brown &  
Seubert

COMMERCIAL REAL ESTATE

## CONTACT

**Stephanie  
Seubert**

stephanie@eebcre.com

**Lilly  
Storment**

lilly@eebcre.com

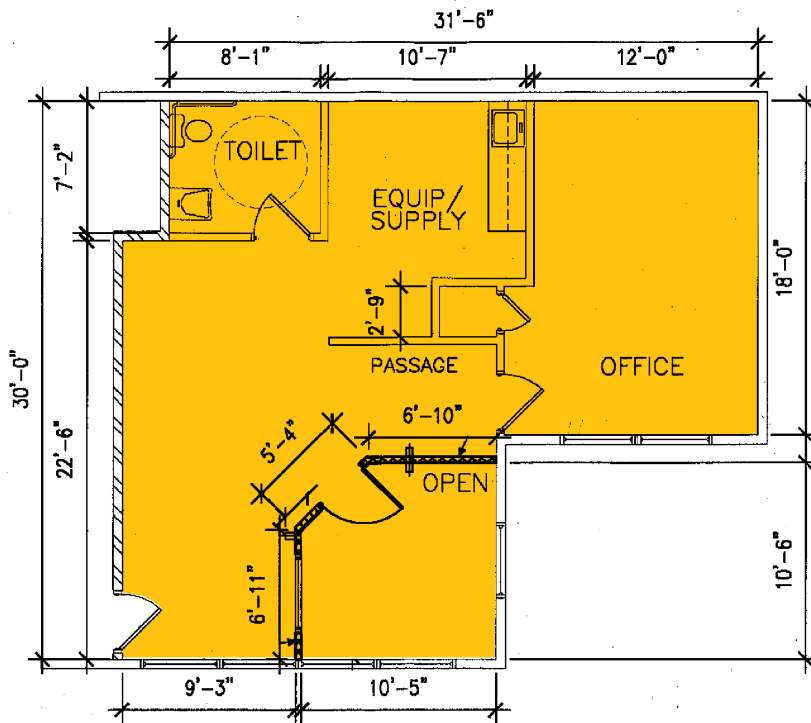
**Jackson  
Seubert**

jackson@eebcre.com

**(541) 345-4860**

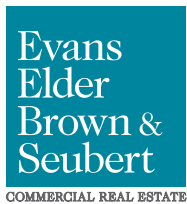
101 East Broadway  
Suite #101  
Eugene, OR 97401

Licensed in the  
State of Oregon.



# Location

1955 Empire Park Drive  
Eugene, Oregon 97402



## CONTACT

(541) 345-4860

**Stephanie Seubert**  
stephanie@eebcre.com

**Lilly Storment**  
lilly@eebcre.com

**Jackson Seubert**  
jackson@eebcre.com