



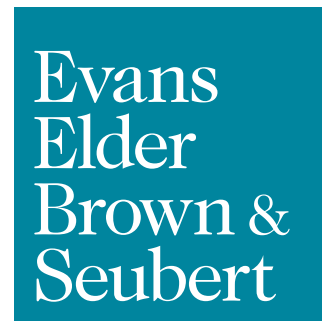
FOR LEASE

Office | P.T. | Fitness Uses

74B Centennial Loop
Eugene OR 97401

SUITE 400: GENERAL OFFICE | PHYSICAL THERAPY | FITNESS USES

- 2,497 square feet
- On-site parking
- Two large restrooms
- Offices and large open area
- Zoned Community Commercial (C-2)
- \$1.50 per square foot triple net



COMMERCIAL REAL ESTATE

CONTACT

Jeff Elder

jeff@eebcre.com

Ashley Elder

ashley@eebcre.com

(541) 345-4860

Licensed in the State of Oregon.

Location Overview

74B Centennial Loop
Eugene, Oregon 97401

Evans
Elder
Brown &
Seubert

COMMERCIAL REAL ESTATE

CONTACT

**Jeff
Elder**

jeff@eebcre.com

**Ashley
Hope
Elder**

ashley@eebcre.com

(541) 345-4860

101 East Broadway
Suite #101
Eugene, OR 97401

Licensed in the
State of Oregon.



Area

Centennial Medical Building is located on Centennial Loop, adjacent Martin Luther King Boulevard, a main road connecting Eugene with Springfield, and a high-volume traffic corridor passing Autzen Stadium, the Hatfield Dowling Center, Kilkenny Field and Mishofsky Center.

This location is in close proximity to the areas hospitals, PeaceHealth Sacred Heart Medical Center Riverbend and McKenzie-Willamette Hospital. The Slocum Center for Orthopedics & Sports Medicine is adjacent Martin Luther King Boulevard as is major retail shopping.

Interstate 5 access is within blocks of this location.



Floor Plan

74B Centennial Loop
Eugene, Oregon 97401

Evans
Elder
Brown &
Seubert

COMMERCIAL REAL ESTATE

CONTACT

**Jeff
Elder**

jeff@eebcre.com

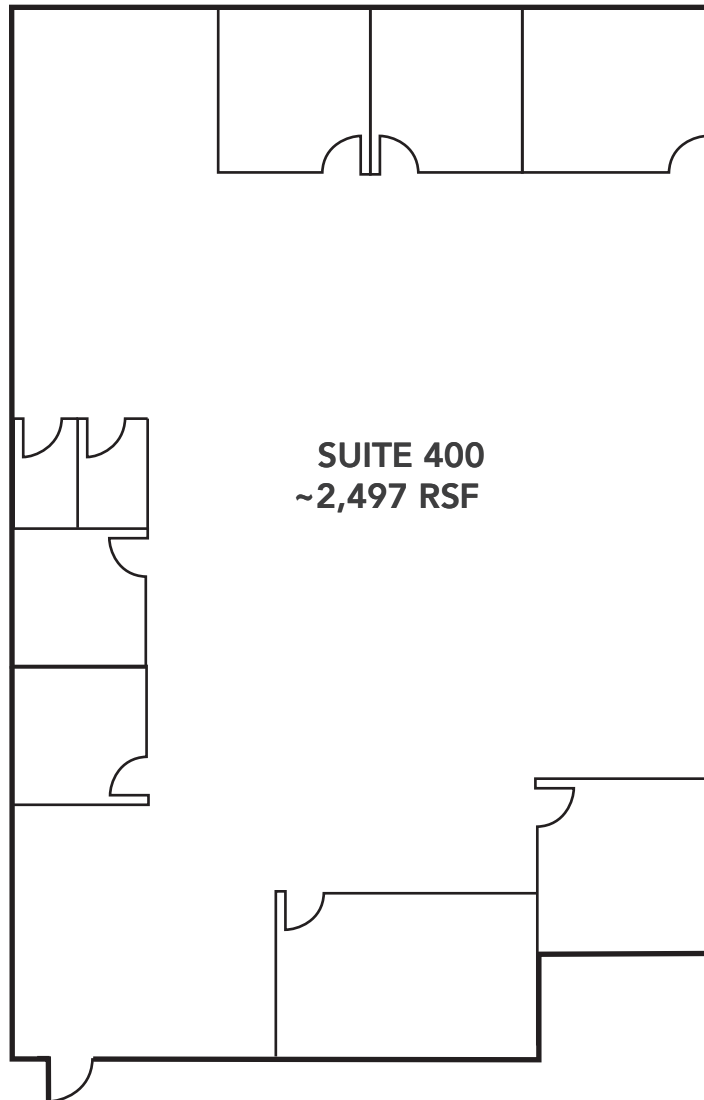
**Ashley
Hope
Elder**

ashley@eebcre.com

(541) 345-4860

101 East Broadway
Suite #101
Eugene, OR 97401

Licensed in the
State of Oregon.



Building Plan

74B Centennial Loop
Eugene, Oregon 97401

Evans
Elder
Brown &
Seubert

COMMERCIAL REAL ESTATE

CONTACT

Jeff
Elder

jeff@eebcre.com

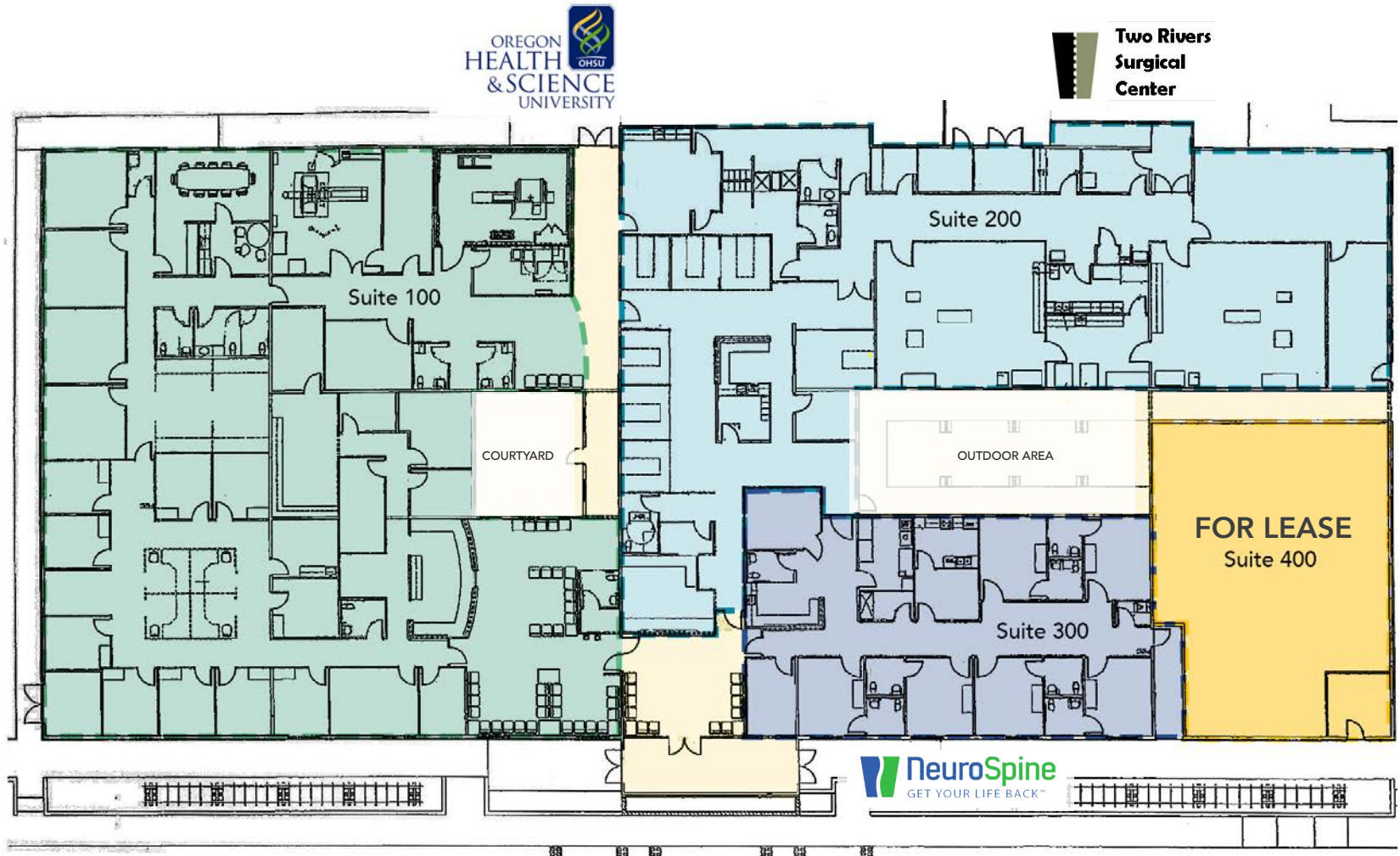
Ashley
Hope
Elder

ashley@eebcre.com

(541) 345-4860

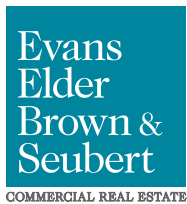
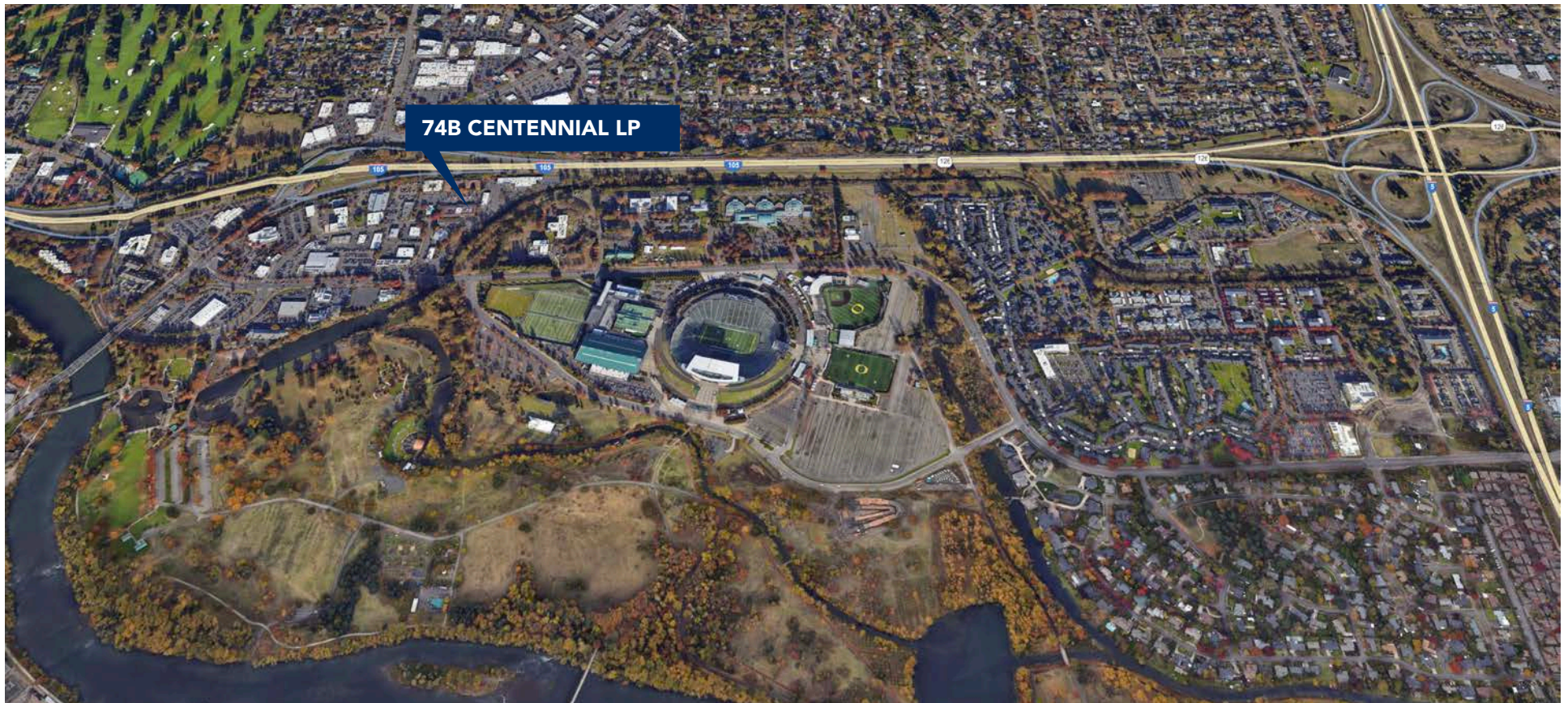
101 East Broadway
Suite #101
Eugene, OR 97401

Licensed in the
State of Oregon.



Map

74B Centennial Loop
Eugene, Oregon 97401



CONTACT

(541) 345-4860

Jeff Elder
jeff@eebcre.com

Ashley Hope Elder
ashley@eebcre.com