



**FOR LEASE**

# Parkview Place Building

101 East Broadway  
Eugene OR 97401

## PRIME DOWNTOWN OFFICE SPACE | SUITE 103

- Class A Office Building
- 1,892 rentable square feet
  - 1,111, rentable square feet on the ground floor
  - 782 rentable square feet on the second floor (no elevator)
- Restroom & kitchenette
- \$1.35 per square foot per month, fully serviced

**Evans  
Elder  
Brown &  
Seubert**

COMMERCIAL REAL ESTATE

## CONTACT

**Jeff Elder**

jeff@eebcre.com

**Ashley Elder**

ashley@eebcre.com

**(541) 345-4860**

Licensed in the State of Oregon.

# Office Suite 103

101 East Broadway  
Eugene OR 97401

**Evans  
Elder  
Brown &  
Seubert**  
COMMERCIAL REAL ESTATE

## Suite 103

**GROUND FLOOR | 1,111 RSF**

### CONTACT

**Jeff  
Elder**

jeff@eebcre.com

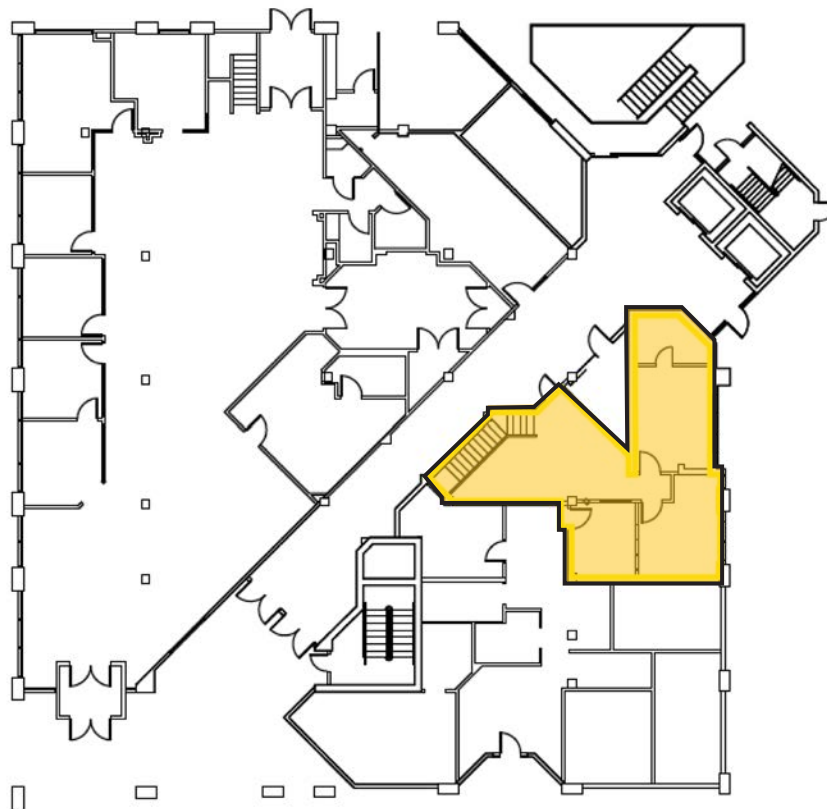
**Ashley  
Hope  
Elder**

ashley@eebcre.com

**(541) 345-4860**

101 East Broadway  
Suite #101  
Eugene, OR 97401

Licensed in the  
State of Oregon.



## Suite 103

**SECOND FLOOR | 782 RSF**





# Office Suite 103

101 East Broadway  
Eugene OR 97401

Evans  
Elder  
Brown &  
Seubert

COMMERCIAL REAL ESTATE

## CONTACT

**Jeff  
Elder**

jeff@eebcre.com

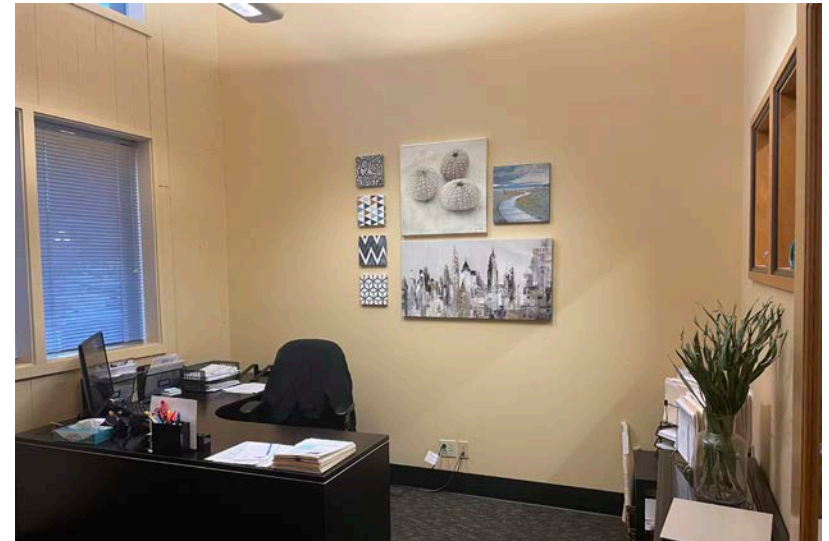
**Ashley  
Hope  
Elder**

ashley@eebcre.com

**(541) 345-4860**

101 East Broadway  
Suite #101  
Eugene, OR 97401

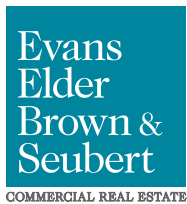
Licensed in the  
State of Oregon.





# Location

101 East Broadway  
Eugene OR 97401



## CONTACT

**Jeff Elder**  
jeff@eebcre.com

**(541) 345-4860**

**Ashley Hope Elder**  
ashley@eebcre.com

**(541) 345-4860**