



**FOR LEASE**

# Market District Office Building

**225 EAST 4TH AVENUE | EUGENE OREGON 97401**

- 5,710 Rentable square feet
- Multiple offices
- Monument Signage
- Plentiful on-site parking
- \$2.25 per square foot, full service less janitorial

**Evans  
Elder  
Brown &  
Seubert**

COMMERCIAL REAL ESTATE

**Jeff Elder**  
jeff@eebcre.com

**Ashley Elder**  
ashley@eebcre.com

**541.345.4860**

Licensed in the State of Oregon.

# Interior Photographs

225 East 4th Ave.  
Eugene OR 97401

Evans  
Elder  
Brown &  
Seubert

COMMERCIAL REAL ESTATE

## CONTACT

**Jeff  
Elder**

jeff@eebcre.com

**Ashley  
Hope  
Elder**

ashley@eebcre.com

**541.345.4860**

101 East Broadway  
Suite #101  
Eugene, OR 97401

Licensed in the  
State of Oregon.



## Office Suite

### LAYOUT

- 17 private offices
- 2 conference rooms
- Reception
- Filing room
- Shared common area restrooms, kitchenette, and patio



# Floor Plan

225 East 4th Ave.  
Eugene OR 97401

Evans  
Elder  
Brown &  
Seubert

COMMERCIAL REAL ESTATE

## CONTACT

Jeff  
Elder

jeff@eebcre.com

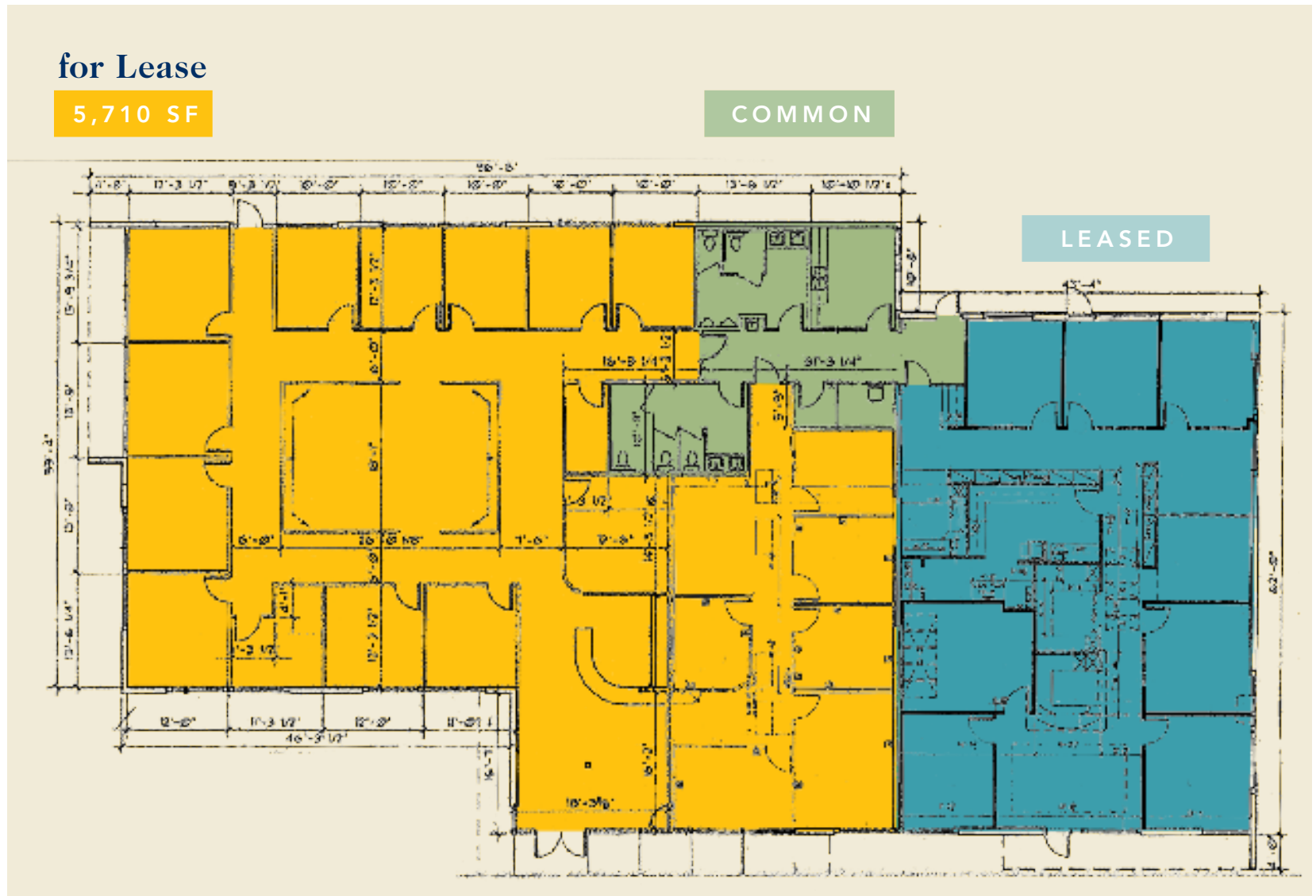
Ashley  
Hope  
Elder

ashley@eebcre.com

541.345.4860

101 East Broadway  
Suite #101  
Eugene, OR 97401

Licensed in the  
State of Oregon.



# Location

225 East 4th Ave.  
Eugene OR 97401



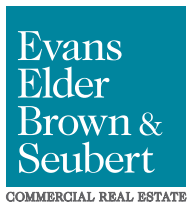
## Nearby

### MARKET DISTRICT

Located near the 5th Street Public Market District, one of Eugene's finest destinations. The Market District has numerous boutiques, a gourmet market, restaurants at every price point, a salon & spa, tasting rooms for wine and beer, and two upscale hotels. It also boasts a new 127-unit apartment complex.

### DOWNTOWN

225 E 4th is located just a few blocks from central downtown, which is home to various financial institutions, title companies, retail, and restaurants.



## CONTACT

541.345.4860

Jeff Elder  
jeff@eebcre.com

Ashley Hope Elder  
ashley@eebcre.com