



**FOR SUBLEASE**

# Class A Office Space

**Evans  
Elder  
Brown &  
Seubert**

COMMERCIAL REAL ESTATE

## CONTACT

**Stephanie Seubert**

stephanie@eebcre.com

**541.345.4860**

Licensed in the State of Oregon.

## SUITE 300

- Approximately 3,185 RSF
- Master lease runs through November 30th, 2026
- Conveniently located between Downtown & the University of Oregon
- \$2.19 per RSF per month, full service, less janitorial

**10th & Mill Building**  
360 East 10th Avenue  
Eugene, Oregon 97401

# Photographs

10th & Mill Building - SUITE 300  
360 East 10th Avenue, Eugene OR 97401

Evans  
Elder  
Brown &  
Seubert

COMMERCIAL REAL ESTATE

## CONTACT

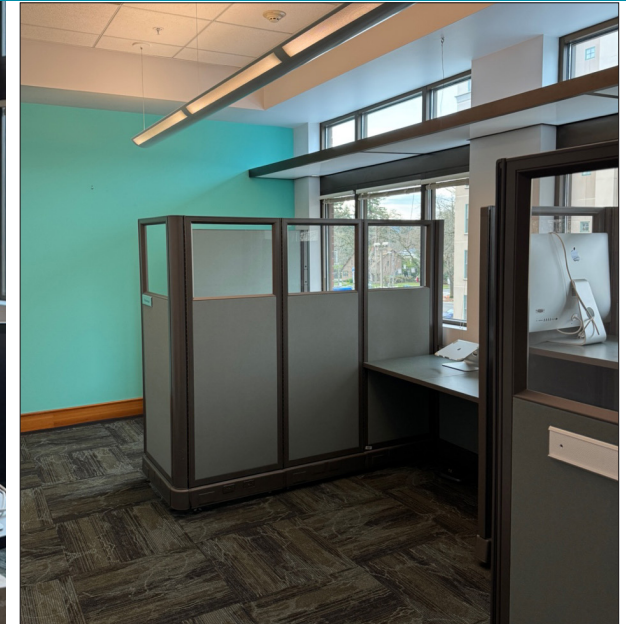
**Stephanie  
Seubert**

stephanie@eebcre.com

**541.345.4860**

101 East Broadway  
Suite #101  
Eugene, OR 97401

Licensed in the  
State of Oregon.



# Suite 300 Floorplan

10th & Mill Building - SUITE 300  
360 East 10th Avenue, Eugene OR 97401

Evans  
Elder  
Brown &  
Seubert

COMMERCIAL REAL ESTATE

## CONTACT

**Stephanie  
Seubert**

stephanie@eebcre.com

**541.345.4860**

101 East Broadway  
Suite #101  
Eugene, OR 97401

Licensed in the  
State of Oregon.

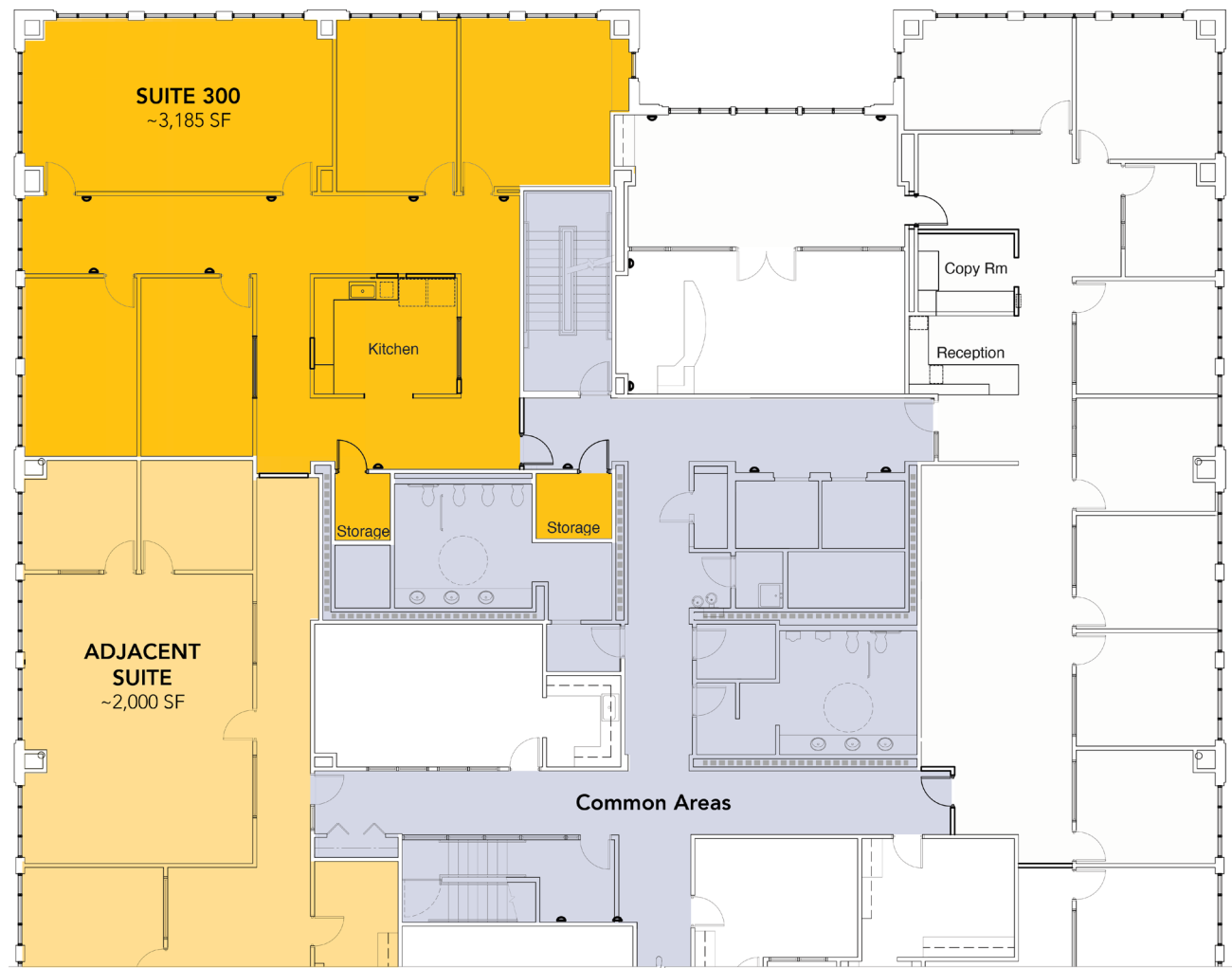
## Suite 300

**APPROXIMATELY  
3,185 RENTABLE SF**

- Four (4) offices
- Kitchenette area
- Large conference room or work space
- \$2.19/RSF/Month Fully Serviced, less janitorial

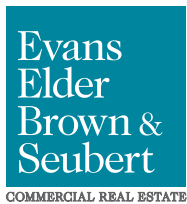
## Adjacent Suite

with approximately **2,000 RSF** could be combined with Suite 300 for a total of approximately 5,185 rentable square feet of space.



# Location

10th & Mill Building - SUITE 300  
360 East 10th Avenue, Eugene OR 97401



## CONTACT

**Stephanie Seubert**

stephanie@eebcre.com

**541.345.4860**