



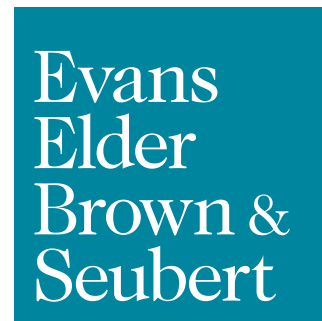
**FOR LEASE**

# Clear Span Warehouse

1270 Interior Street  
Eugene OR 97402

**7,452 SF** of open clear span warehouse space  
**\$5,975 PER MONTH** no additional NNN expense

- Located on large fenced and gated lot
- Property is zoned E-2 (Mixed-use Employment)
- Convenient West Eugene location



COMMERCIAL REAL ESTATE

## CONTACT

**Stephanie Seubert**  
stephanie@eebcre.com

**John Brown**  
john@eebcre.com

**541.345.4860**

Licensed in the State of Oregon.

# Description

1270 Interior Street  
Eugene OR 97402

Evans  
Elder  
Brown &  
Seubert

COMMERCIAL REAL ESTATE

## CONTACT

**Stephanie  
Seubert**

stephanie@eebcre.com

**John  
Brown**

john@eebcre.com

**541.345.4860**

101 East Broadway  
Suite #101  
Eugene, OR 97401

Licensed in the  
State of Oregon.



- Building has two small offices, open clear span warehouse space with 16' clear height ceilings, two 12' x 14' roll-up doors and one 20' x 12' roll up door.
- Property is located on a fenced and gated lot of approximately 0.90 acres providing for outdoor storage.

Evans  
Elder  
Brown &  
Seubert

COMMERCIAL REAL ESTATE

## CONTACT

**Stephanie  
Seubert**

stephanie@eebcre.com

**John  
Brown**

john@eebcre.com

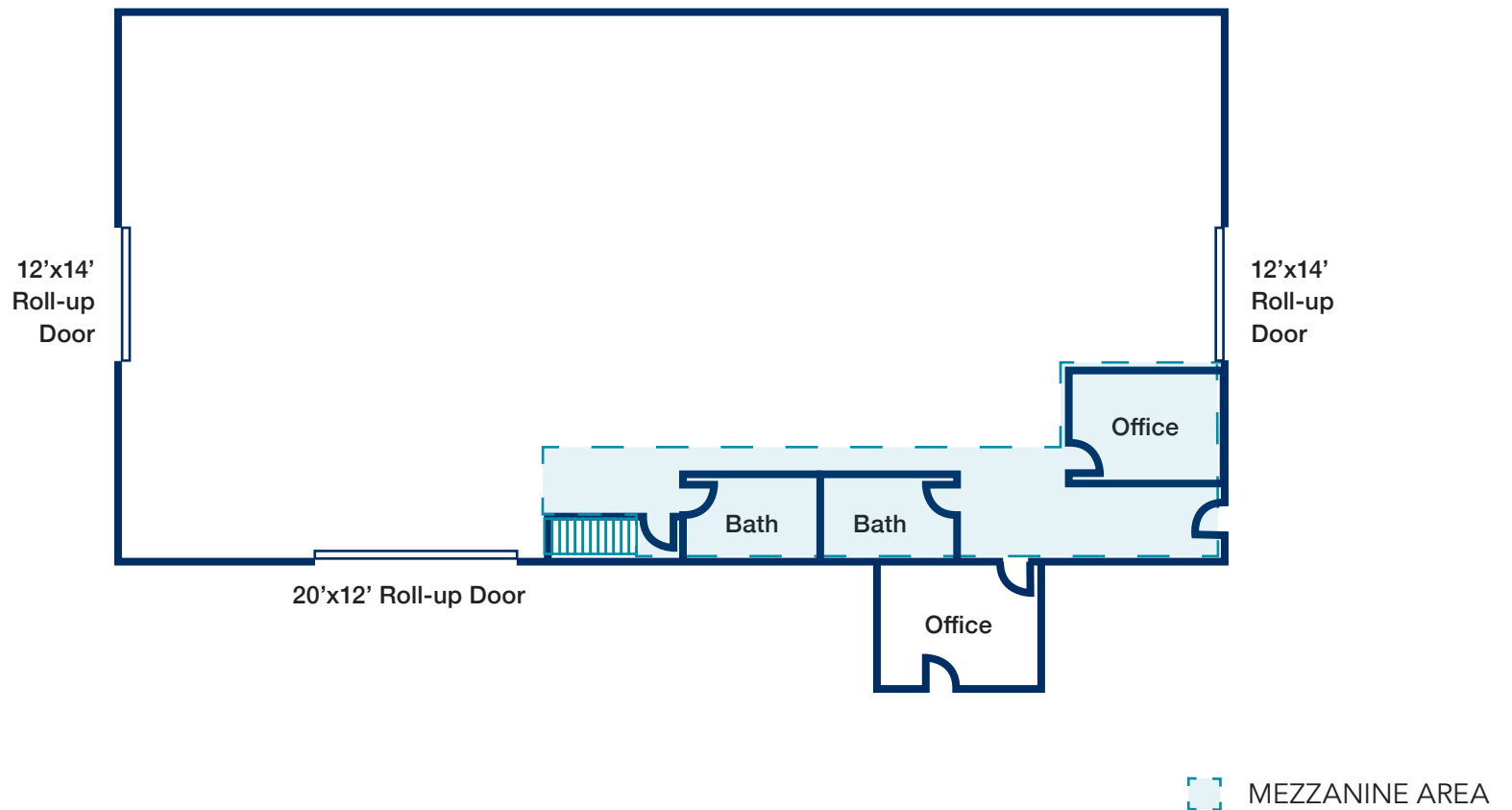
**541.345.4860**

101 East Broadway  
Suite #101  
Eugene, OR 97401

Licensed in the  
State of Oregon.

## Clear Span Warehouse with Office Space

APPROXIMATELY 7,452 SQUARE FEET



# Location

1270 Interior Street  
Eugene OR 97402

Evans  
Elder  
Brown &  
Seubert

COMMERCIAL REAL ESTATE

## CONTACT

**Stephanie  
Seubert**

stephanie@eebcre.com

**John  
Brown**

john@eebcre.com

**541.345.4860**

101 East Broadway  
Suite #101  
Eugene, OR 97401

Licensed in the  
State of Oregon.

